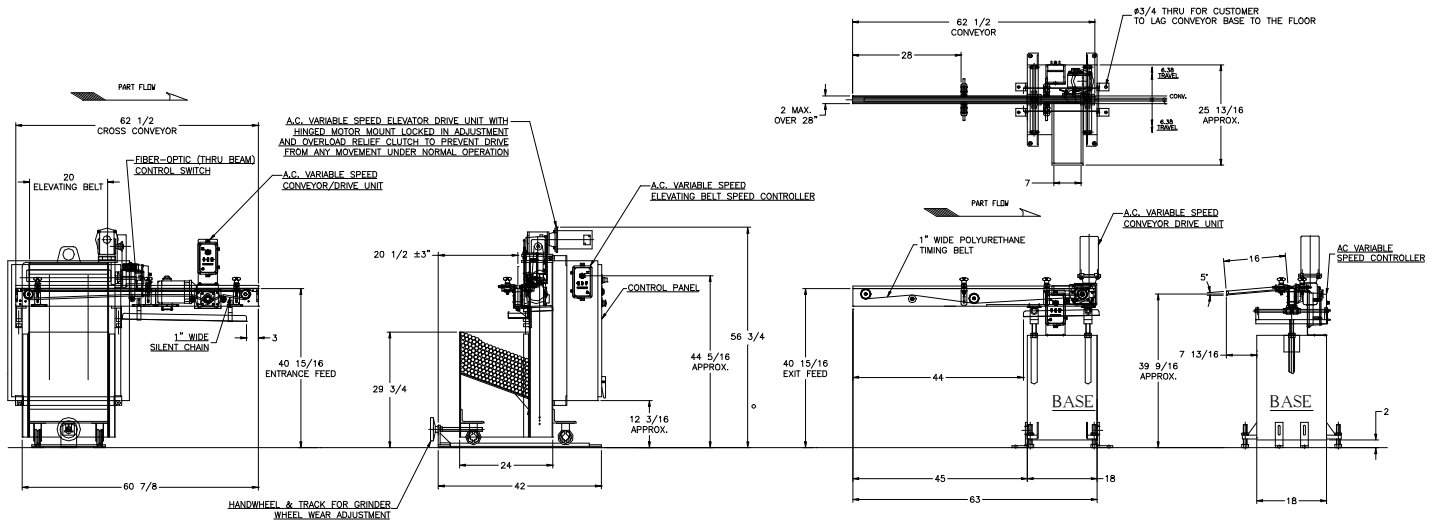


FEEDALL Model 2000 Elevating Hopper Feeder w/1650-1SC-62-1/2 Cross-Feed Conveyor & 1650-1PB-62-1/2 Exit Conveyor



- APPLICATION:** Feed from a random loaded floor mounted hopper. The Steel Shafts will be elevated from the hopper via a cleated belt and deposited onto a front-end mounted, cross-feed conveyor. The conveyor will translate the parts in a continuous, end-to-end stream to the workrest of an OKAMOTO Centerless grinder.
- BELT WIDTH:** 20" Wide Elevating Belt
- DRIVE:** 1/4 HP/AC Motor w/Variable Frequency Controller
- PARTS FED (SIZE):** Steel Shafts (0.25"-0.610"Ø x 1.00"-6.00" Lg.)
- FEED RATE:** 12-15 Parts/Minute
- MACHINE FED:** OKAMOTO Centerless Grinder