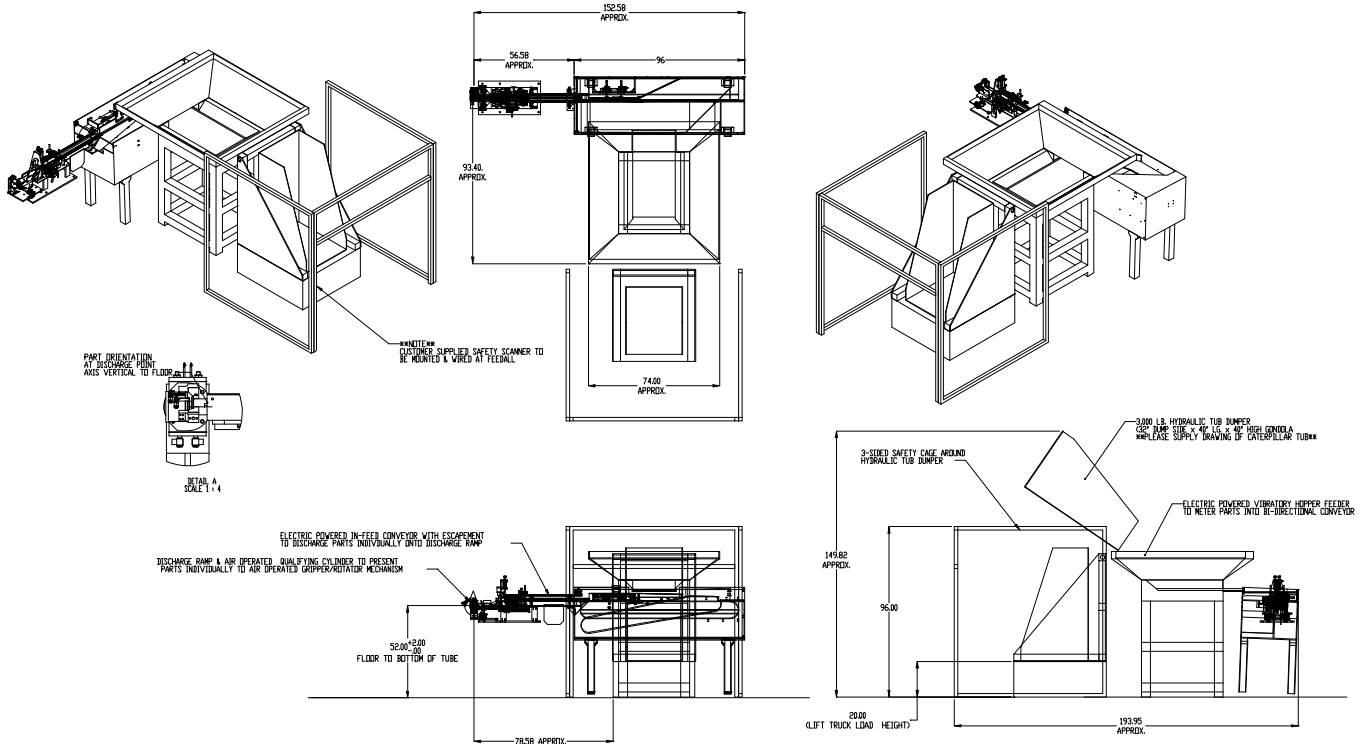


FEEDALL Model 1500 Bi-Directional Orienting Conveyor w/3,000# Vibratory Metering Hopper, TC-38-84-3,000# Hydraulic Tub Dumper & GLH-3.5-4 Exit Conveyor



APPLICATION:

Feed from a random loaded, floor mounted hopper. The Steel Tubular Slugs will be elevated from hopper via a tub dumper onto a vibratory hopper and spilled at random onto a bi-directional orienting conveyor. Slugs will merge from the in-feed conveyor lane onto the orienting conveyor lane and exit in a continuous, end-to-end stream to an automatic, air operated slug pusher device. Pusher device will load one slug at a time into an air-operated rotary actuator equipped with a pneumatic gripper. The rotary actuator will present the slug with axis vertical with the bottom of the slug.

BELT WIDTH:

24" Return Lane/18" Orienting Lane

DRIVE:

1-1/2 HP/AC Motor

PARTS FED (SIZE):

Steel Tubes (17.27mm-74.62mmØ x 49.53mm-123.26mm Lg.)

FEED RATE:

10 Parts/Minute

MACHINE FED:

Press