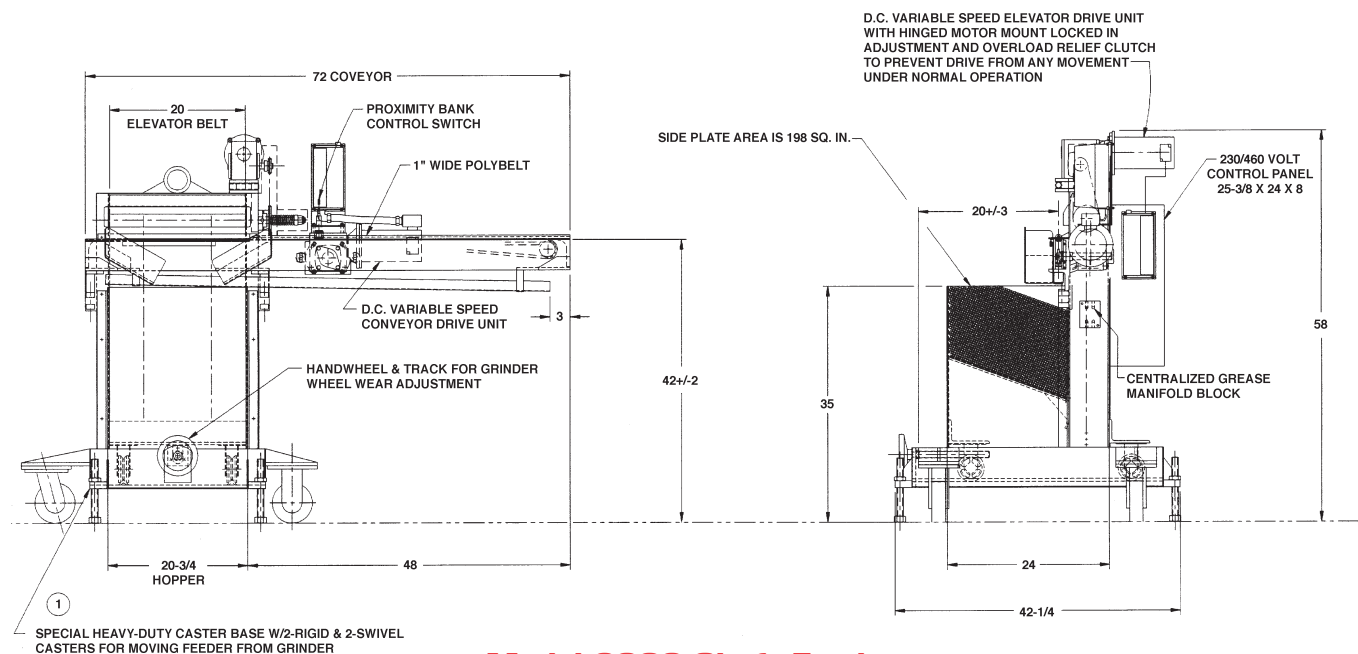


Feedall takes the hassle... and the labor out of feeding centerless grinding operations



Model 2000 Shaft Feeder

(See front cover for complete system)



Feedall Model 2000

Bar feeder (shown) with a Centerless Grinder

Meeting today's demand for higher quality and lower production cost is the biggest challenge faced by screw machine shops... everywhere. Conventional centerless grinding operations for example, use 2 operators — one to feed and one to catch. When you install a Feedall 1700 or Model 2000 bar feeding system, labor costs are reduced 50% or more. Your pay back is less than a year and the operator is free to inspect, package or run multiple lines.

Also, Feedall delivers:

- Quicker Changeovers
- Greater parts flexibility
- Precise parts orientation

... just what you need for lower costs and increased productivity in the screw machine shop.

Join the hundreds of companies benefiting from Feedall parts handling/conveyor innovation. We've served diverse industry since 1946. Our experienced sales reps and application engineers can help you select or design, the right feeder/conveyor... at the right cost... for your most demanding application.

Call TODAY!!!
1-800-942-8101

Feedall
automation

Reliable Automatic Parts Feeders Designed With Ingenuity
38379 Pelton Road • Willoughby, Ohio 44094
440-942-8100 • Fax 440-942-5710
1-800-942-8101 • www.feedall.com

Feedall
automation

Reliable Automatic Parts Feeders Designed With Ingenuity

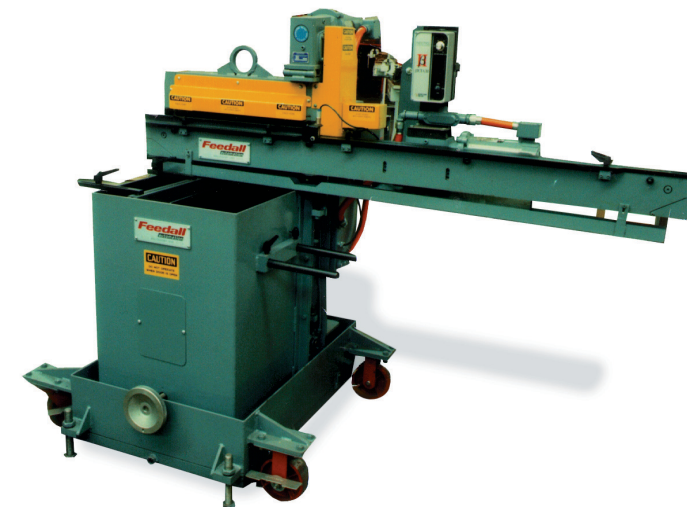
MODEL

2000/3000/3600/4800

SERIES

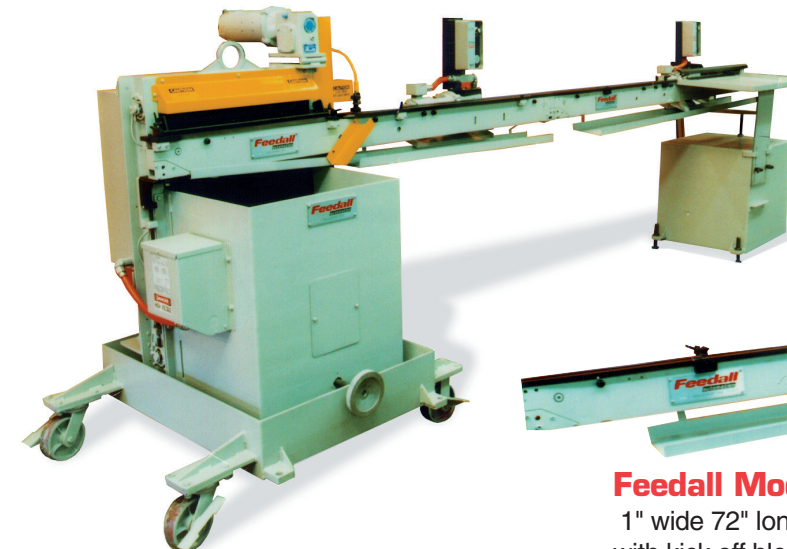
BULK OR HAND STACKED CYLINDRICAL PART HOPPER FEEDERS

These Feedall hoppers are used for feeding cylindrical type parts such as, cut bars, tubes, and shafts. Parts are fed to various types of equipment; centerless grinders, thread rollers, induction heaters for selective hardening or preheating for forging and many other applications. For each application a feeder is sized and equipped with various tooling and options to suit. This type feeder is designed for higher feed rates and gentle handling of the parts with lower noise levels. The hoppers are either bulk loaded or parts may be hand stacked in multiple rows when orientation of the part is required or when parts are soft and bulk loading may cause part to part damage.



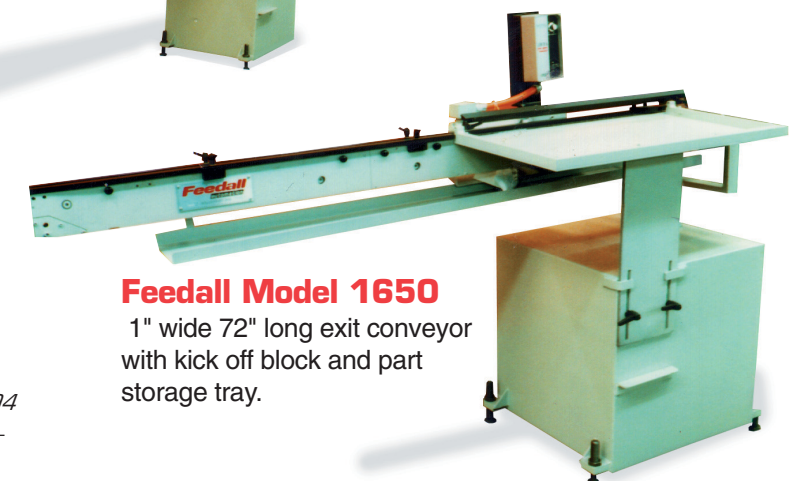
Feedall Model 2000

20" wide elevator, Model 1650
1" wide 72" long conveyor, adjustable hopper dividers and caster cart with caster track.



Feedall Model 2000

Centerless grinder feed system, input feeder and exit conveyor.



Feedall Model 1650

1" wide 72" long exit conveyor with kick off block and part storage tray.

38379 Pelton Road • Willoughby, Ohio 44094
440-942-8100 • Fax 440-942-5710
1-800-942-8101 • www.feedall.com

Model 2000 Standard Features

- 20" wide elevator belt
- 20" wide hopper, 2.7 cubic foot capacity
- Model 1650 1" wide x 72" long conveyor
- Two 1/4 hp. variable speed D.C. drives (elevator & conveyor)
- 42-3/4" discharge height
- NEMA 12 controls

Model 3000 & 3600 Standard Features

- 30" & 36" wide elevator belt
- 30" & 36" wide hopper, 8 & 10 cubic foot capacity
- Model 1650 1" wide x 72" long conveyor
- 1/2 hp. elevator, 1/4 hp. conveyor variable speed D.C. drive
- 42-3/4" discharge height
- NEMA 12 controls

Model 4800 Standard Features

- 48" wide elevator belt
- 48" wide hopper, 12 cubic foot capacity
- Model 1650 1" wide x 84" long conveyor
- 1-1/2 hp. elevator and 1/2 hp. conveyor variable speed D.C. drive
- 60" discharge height
- NEMA 12 controls

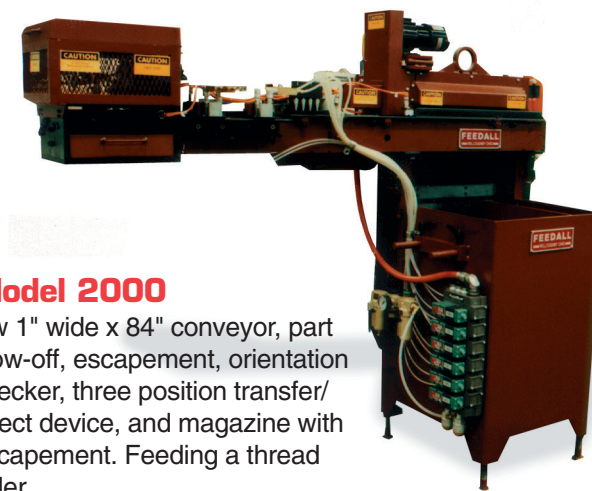
Optional Features

- Special hopper modifications to suit
- Increased elevator heights
- Additional conveyor lengths, 12" increments
- Optional conveyor width of 2"
- Optional conveyor belts, flat timing chain, polyurethane timing belt and roller chain
- Caster base & track (for wheel wear adj. on centerless grinder) caster cart with track (for mobility from machine fed or to other machines) includes wheel locks and leveling screws
- Parts orienters, transfers, pushers and escapements



Model 2000

c/w 1" wide x 72" conveyor, and caster base for feeding a centerless grinder. Parts fed: 1/4" to 1/2" dia. x .700 to 8" lg. @ 200" per min.



Model 2000

c/w 1" wide x 84" conveyor, part blow-off, escapement, orientation checker, three position transfer/reject device, and magazine with escapement. Feeding a thread roller.

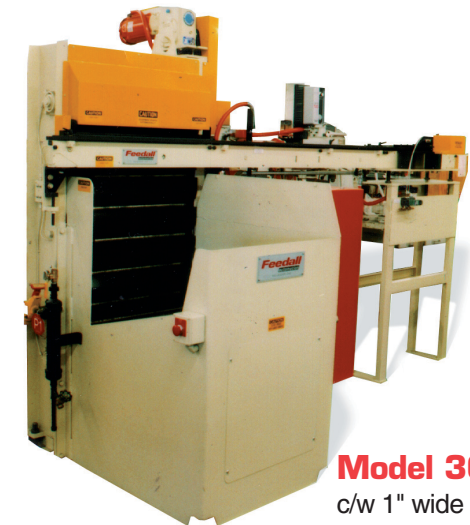
Parts fed: .375" dia. x 3.500" to 8.000" lg. @ 40 per min.



Model 3600

c/w 1" wide x 120" conveyor, transfer and magazine with escapement. Feeding a nut runner

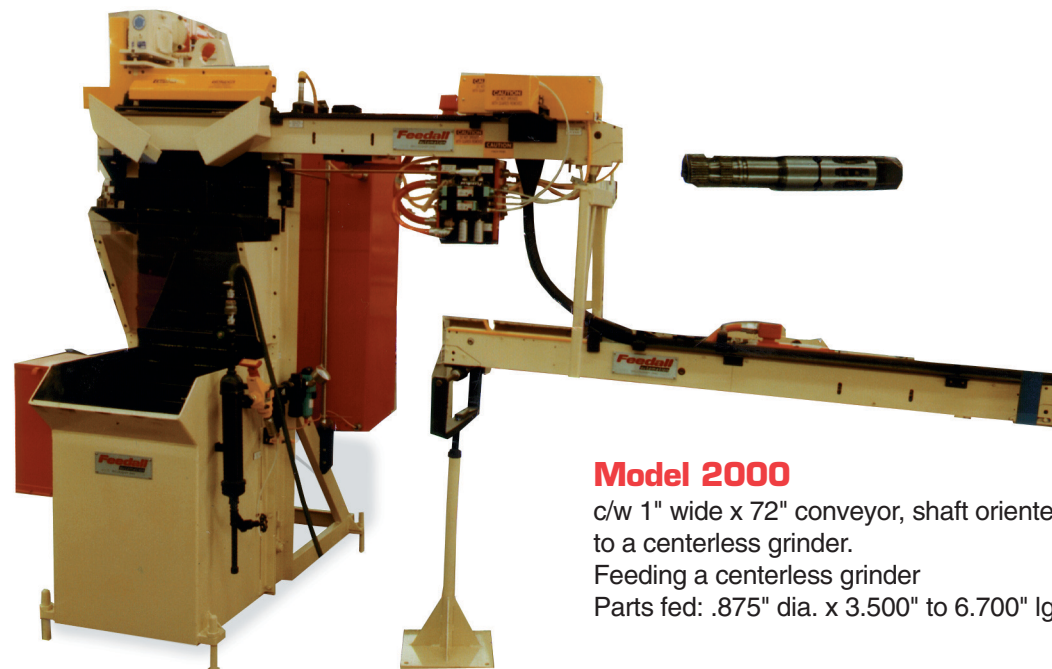
Parts fed: 1/2" to 1" dia. x 2" to 10" lg. @ 60 per min.



Model 3000

c/w 1" wide x 96" conveyor, transfer device and step chute. Feeding a stress crack inspection machine

Parts fed: .900" to 1.250" dia. x 20" to 27" lg. @ 10 per min.



Model 2000

c/w 1" wide x 72" conveyor, shaft orienter and 72" input conveyor to a centerless grinder.

Feeding a centerless grinder

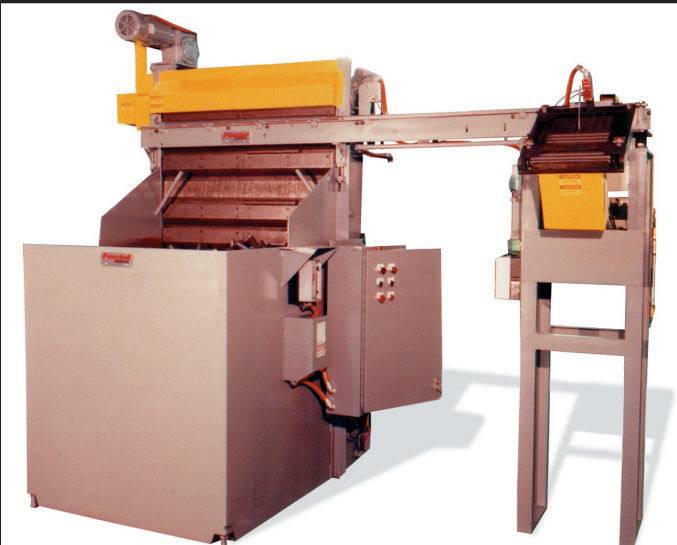
Parts fed: .875" dia. x 3.500" to 6.700" lg. @ 25 per min.



Model 3600

c/w 1" wide x 84" conveyor, and roller chute. Feeding an end facing machine.

Parts fed: .800" to 1.100" dia. x 2.600" to 3.44" lg. @ 75 to 100 per min.



Model 4800

c/w 1" wide x 96" conveyor, transfer device, magazine and escapement. Feeding an induction heater for forging.

Parts fed: 1.25" to 1.75" dia. x 10" to 15" lg. @ 10 to 20 per min.