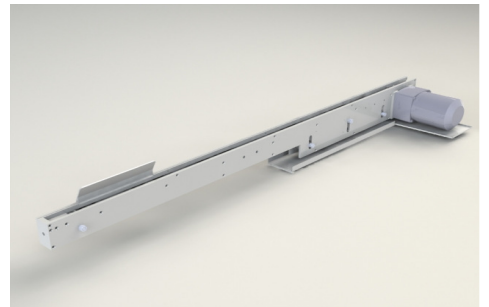
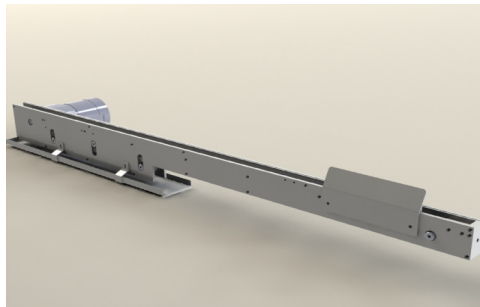
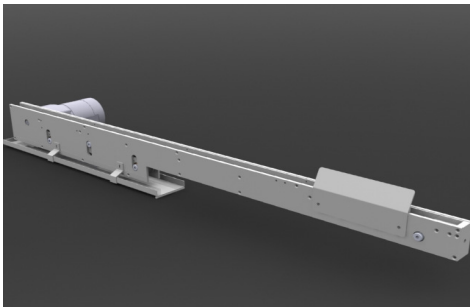
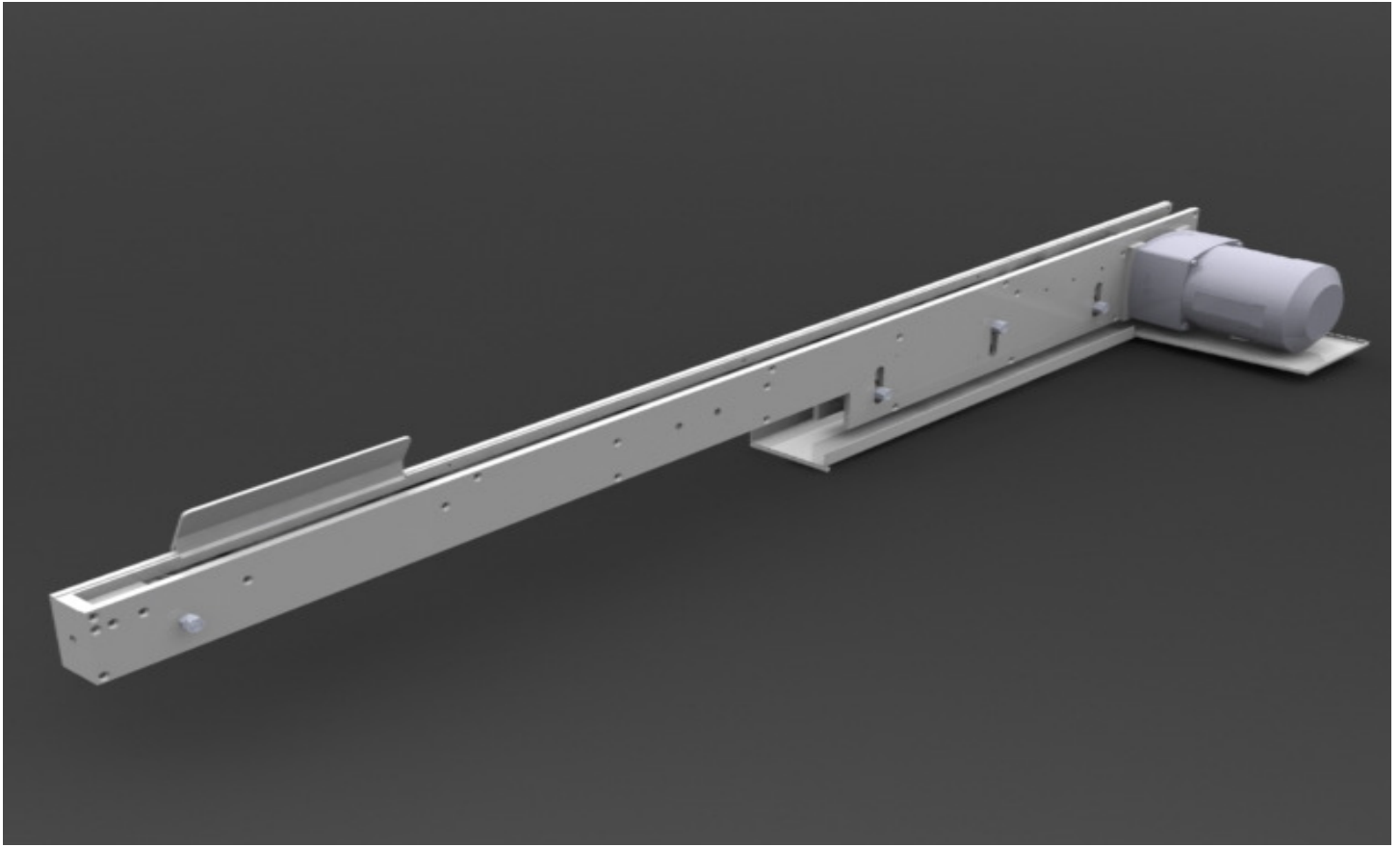


## **FEEDALL Model 1670 Exit Conveyor for Centerless Grinder**



**FEEDALL's Model 1670 Exit Conveyors** are specifically designed to mount to the grinder's lower slide and exit parts to the front of the grinder for end feed applications. They are capable of feeding all kinds of different parts. Unlike traditional conveyors, **FEEDALL'S** are built to run 24 hours a day, 7 days a week! The **HIGH QUALITY** craftsmanship and **FLEXIBLE** design set us apart from the completion. Since 1946, **FEEDALL** has provided parts feeding solutions that not only meet, but exceed our customer's expectations! Contact **FEEDALL** at 440-942-8100 or visit our website at [www.feedall.com](http://www.feedall.com) to find your local **FEEDALL** Sales Representative. We look forward to the opportunity to show you how we can not only solve your parts feeding problems, but more importantly, increase your bottom line!

### ***EQUIPMENT SPECIFICATIONS for FEEDALL Model 1670 Exit Conveyor***

- a.** Conveyor frame made from 1/4" #6061 Aluminum or CRS side plates, 3/8" end plates, and conveyor bottom (exit end) with 3/8 diameter conveyor spacers on entrance end.
- b.** 1" wide Polyurethane Timing Belt with overall conveyor length of 57".
- c.** Conveyor belt support rail will be milled on each side to allow coolant to flow through conveyor.
- d.** Conveyor drive is a fixed speed Gear Motor 115 VAC, 19 RPM, producing a conveyor belt speed of 148 inches/minute.
- e.** Drive and idler pulleys will be steel timing belt style with guide rings.
- f.** Three (3) adjustable idler pulleys will be provided for belt tensioning.
- g.** Heat-treated, tool steel wear rail mounted on load side of entrance end of conveyor to act as a bumper rail as parts exit the grinder workrest.
- h.** One (1) tapped mounting hole on entrance end of conveyor in end plate and two (2) tapped holes in conveyor side plate in the middle of conveyor for mounting to grinder workrest.
- i.** Conveyor aluminum frame assembly will be supplied unpainted, guides and wear rail will be black oxide and Gear Motor will be painted per manufacturer's specification.