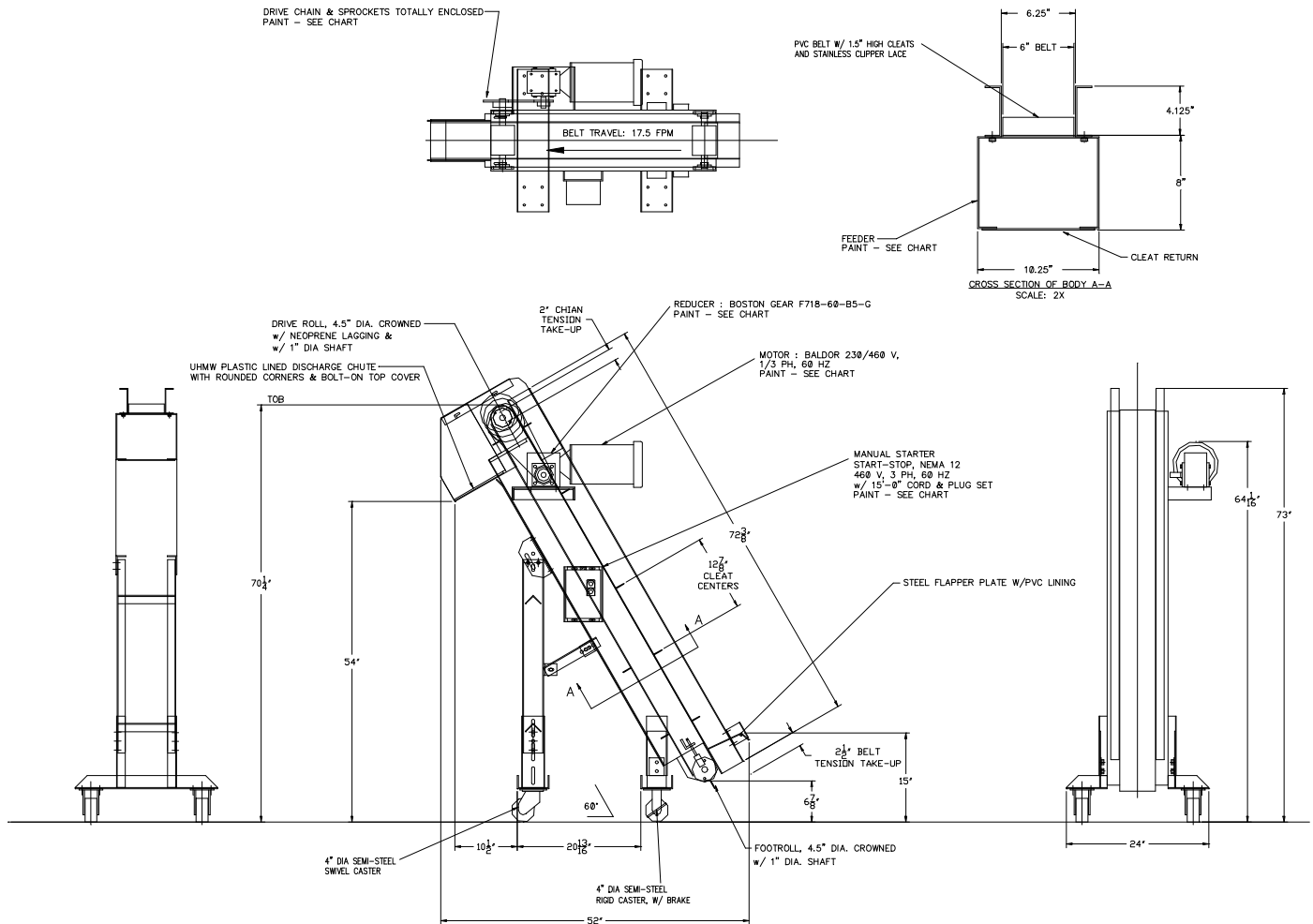


## FEEDALL Model K4W-06-6 Mini-Bulk Feeder



- APPLICATION:** Convey Universal Joint Bearing Cups from 15" to 60" above the floor.
- BELT WIDTH:** 6" Wide PVC Belt w/Cleats
- DRIVE:** 1/3 HP AC Motor
- PARTS FED (SIZE):** Universal Joint Bearing Cups
- FEED RATE:** 17.5 Feet/Minute
- MACHINE FED:** CNC Turning Center