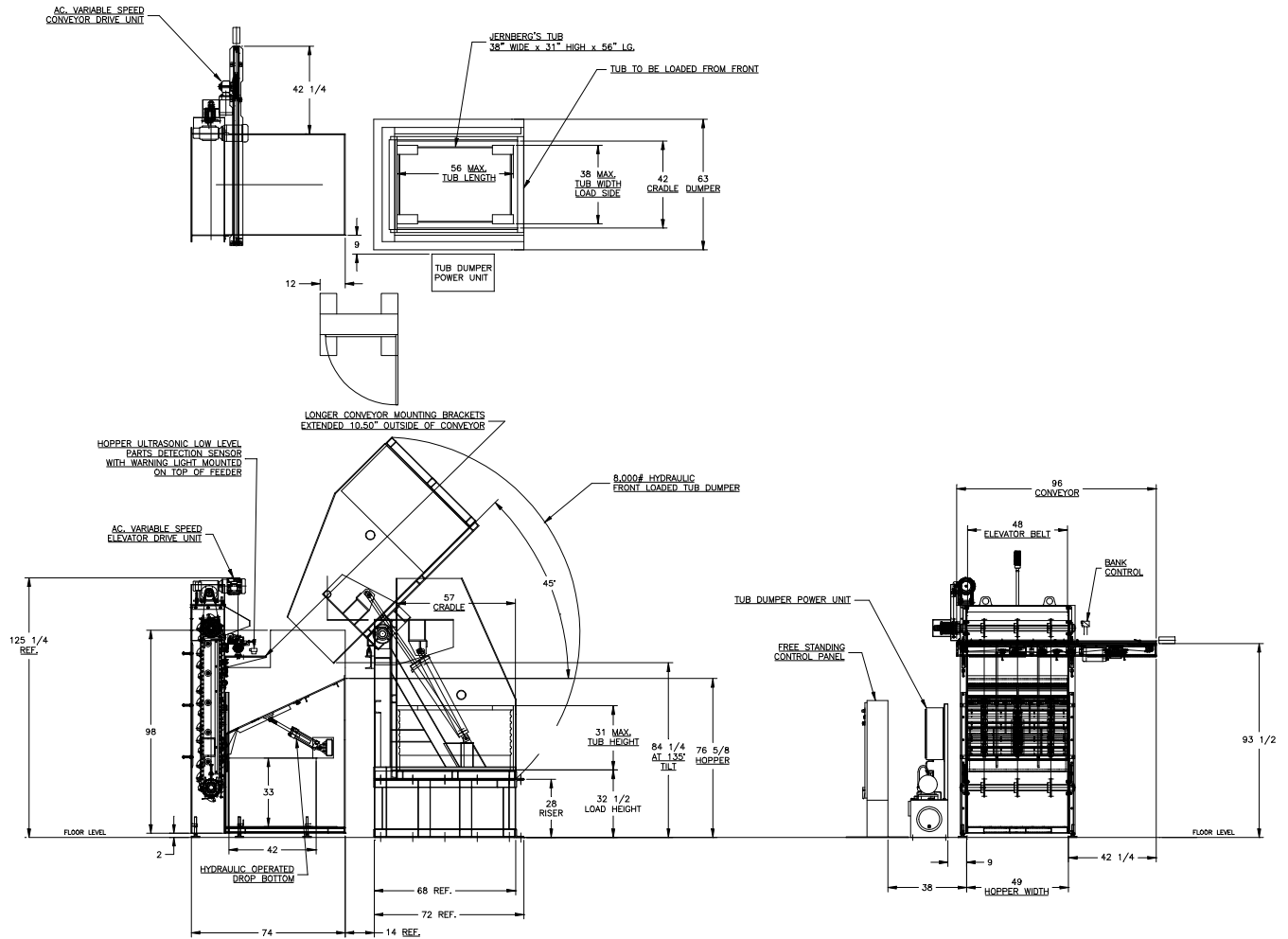


## FEEDALL Model 4800-HD Elevating Hopper Feeder w/1650-80RC-96 Cross-Feed Conveyor & TC-56-74-8,000# Hydraulic Tub Dumper



**APPLICATION:** Parts will be dumped from a floor mounted tub dumper into a floor mounted hopper. The billets will be elevated from the hopper via cleated belt and deposited onto a cross-feed conveyor. The conveyor will translate the parts in a continuous stream into customer's forging press.

**BELT WIDTH:** 48" Wide Elevating Belt

**DRIVE:** 3 HP/AC Motor

**PARTS FED (SIZE):** Sheared Steel Billets (1.875"-2.50"Ø x 4.00"-7.00" Lg.)

**FEED RATE:** 18 Parts/Minute

**MACHINE FED:** Induction Heater