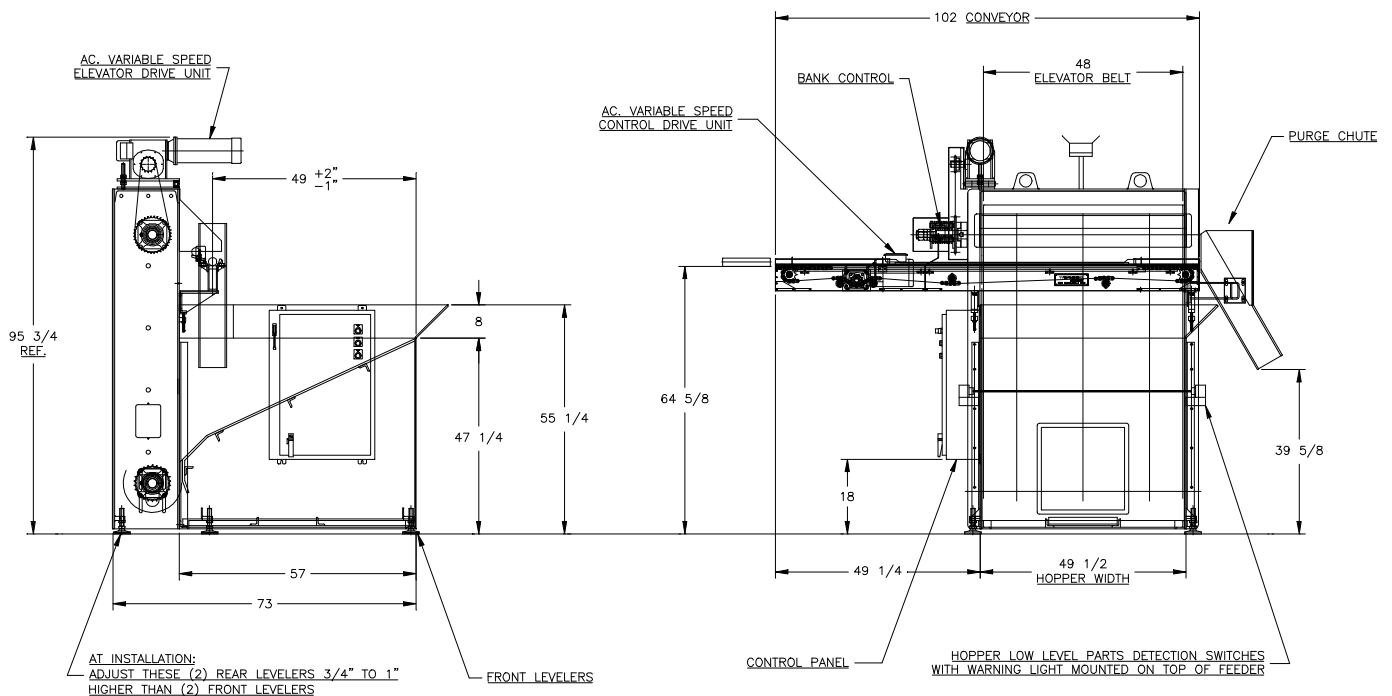
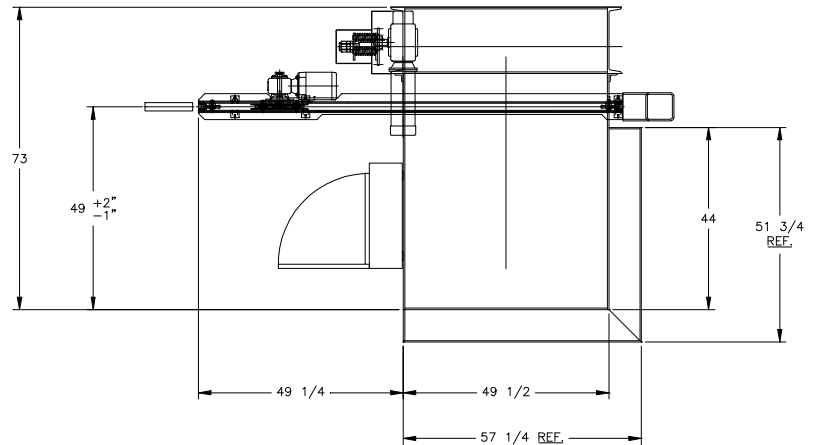


FEEDALL Model 4800-HD Elevating Hopper Feeder w/1650-80RC-102 Cross-Feed Conveyor



- APPLICATION:** Feed from a random loaded floor mounted hopper. The Steel Billets will be elevated from the hopper via cleated belt and deposited onto a cross-feed conveyor. The conveyor will translate the parts in a continuous stream to a customer supplied 20° Vibratory Track.
- BELT WIDTH:** 48" Wide Elevating Belt
- DRIVE:** 1-1/2 HP/AC Motor
- PARTS FED (SIZE):** Steel Billets (2.00"-3.75"Ø x 4.48"-13.00" Lg.)
- FEED RATE:** 3-10 Parts/Minute
- MACHINE FED:** Induction Heater