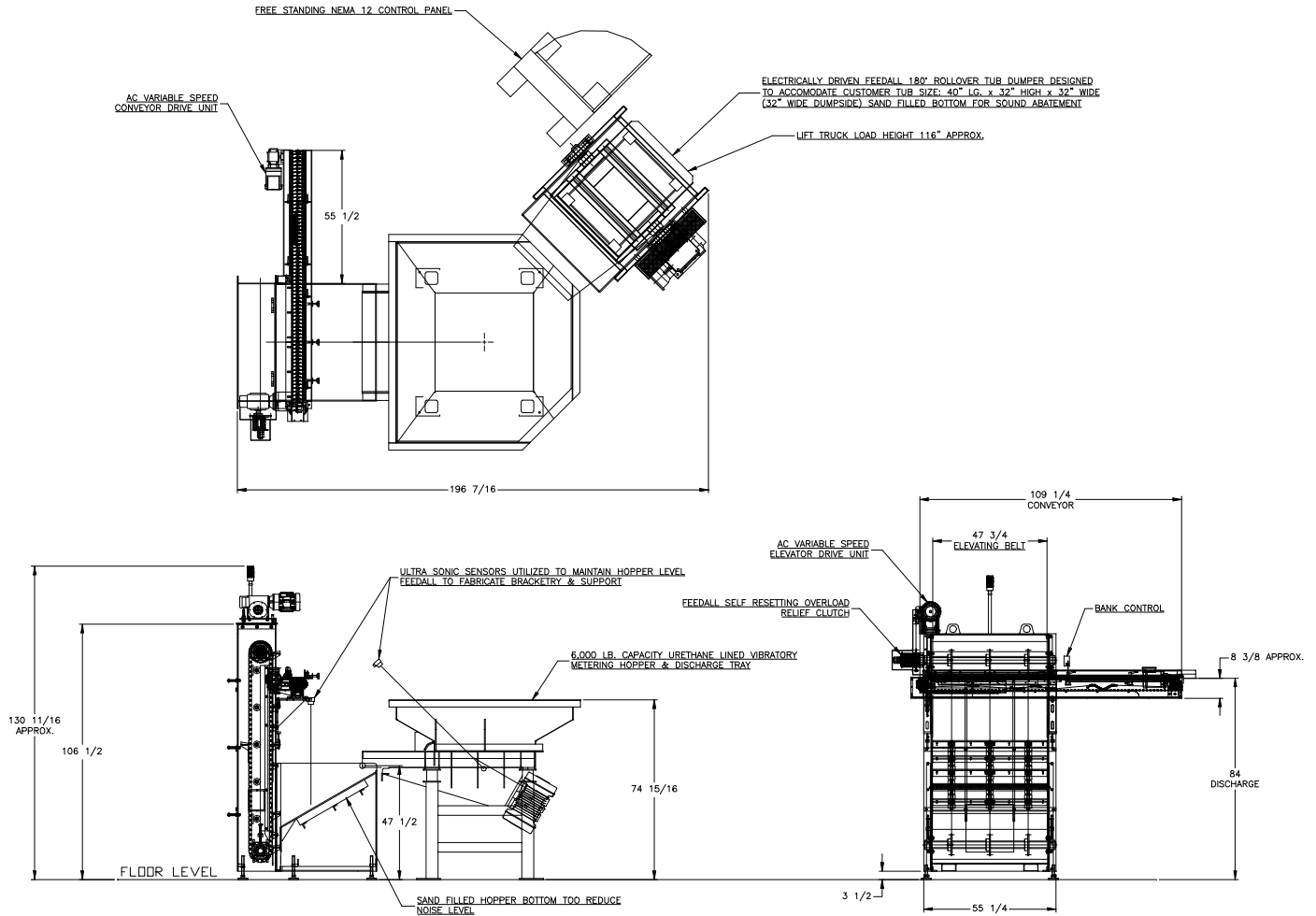


FEEDALL Model 4800 Elevating Hopper Feeder w/1640-4TTC-108 Cross-Feed Conveyor, 6,000# Vibratory Metering Hopper & 180° Roll-Over Tub Dumper



APPLICATION:

Feed from a random loaded floor mounted hopper. The parts will be dumped from a tub into a urethane lined vibratory metering hopper. Upon a signal these parts will then be metered into a vertical elevating hopper feeder designed to pick up parts in a proper orientation. Once loaded onto the belt the parts will be elevated then swept off the cleats onto a horizontal cross feed conveyor which will feed parts in a continuous stream to a VIBRATORY track.

BELT WIDTH:

48" Wide Elevating Belt

DRIVE:

2 HP/AC Motor

PARTS FED (SIZE):

Steel Billets (2.75"-5.25"Ø x 6.00"-28.00" Lg.)

FEED RATE:

6 Parts/Minute

MACHINE FED:

Induction Heater