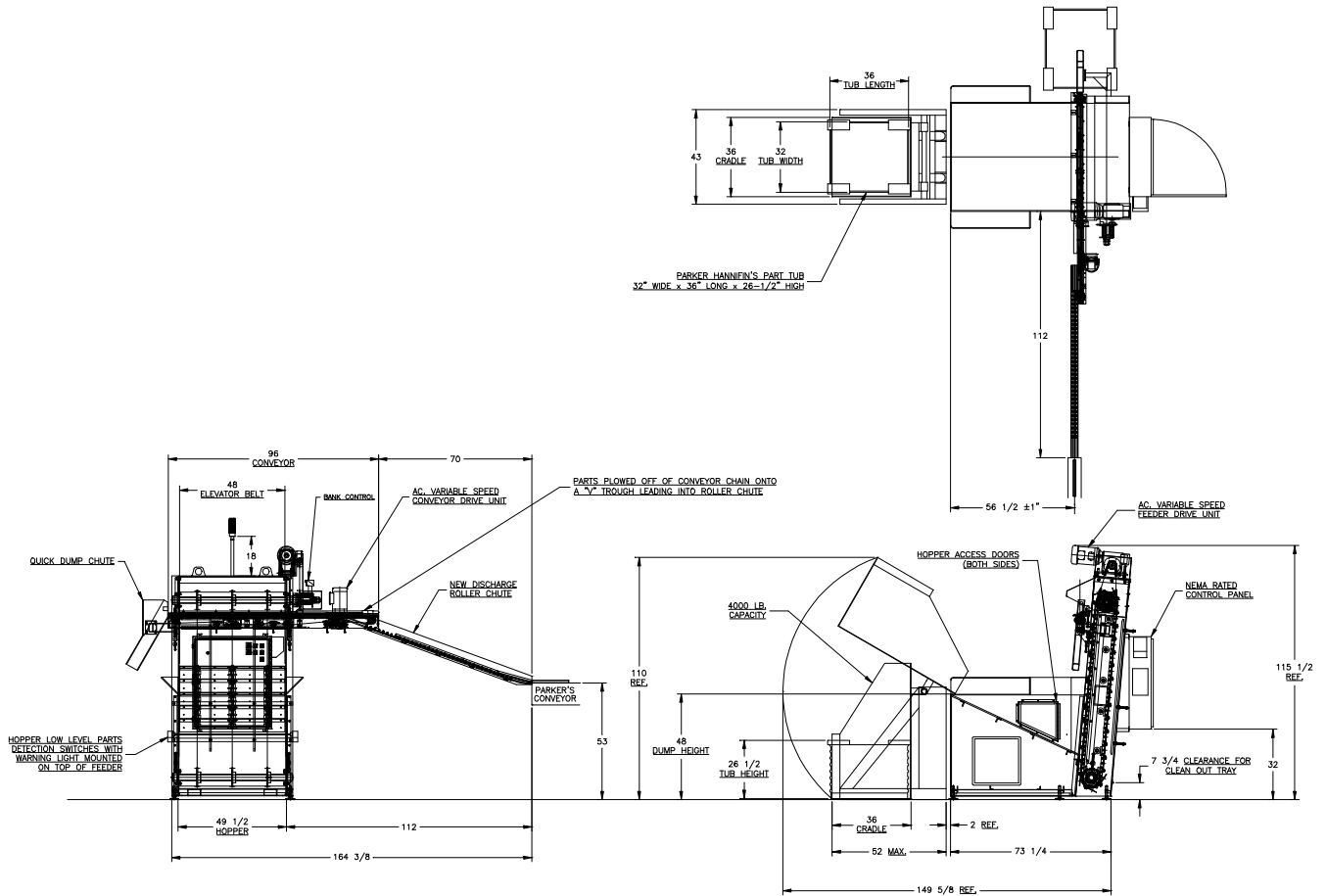


FEEDALL Model 4800 Elevating Hopper Feeder w/1650-80RC-96 Cross-Feed Conveyor & 4,000# Hydraulic Tub Dumper



- APPLICATION:** Feed from a random loaded floor mounted hopper. The Sheared Hot Rolled Steel will be elevated from the hopper via cleated belt and deposited onto a cross-feed conveyor. The conveyor will translate the parts in a continuous stream onto an input conveyor of an induction heater.
- BELT WIDTH:** 48" Wide Elevating Belt
- DRIVE:** 1-1/2 HP/AC Motor
- PARTS FED (SIZE):** Sheared Hot Rolled Steel Bars (0.63"-1.25"Ø x 12.00"-16.50" Lg.)
- FEED RATE:** 8 Parts/Minute
- MACHINE FED:** Induction Heater