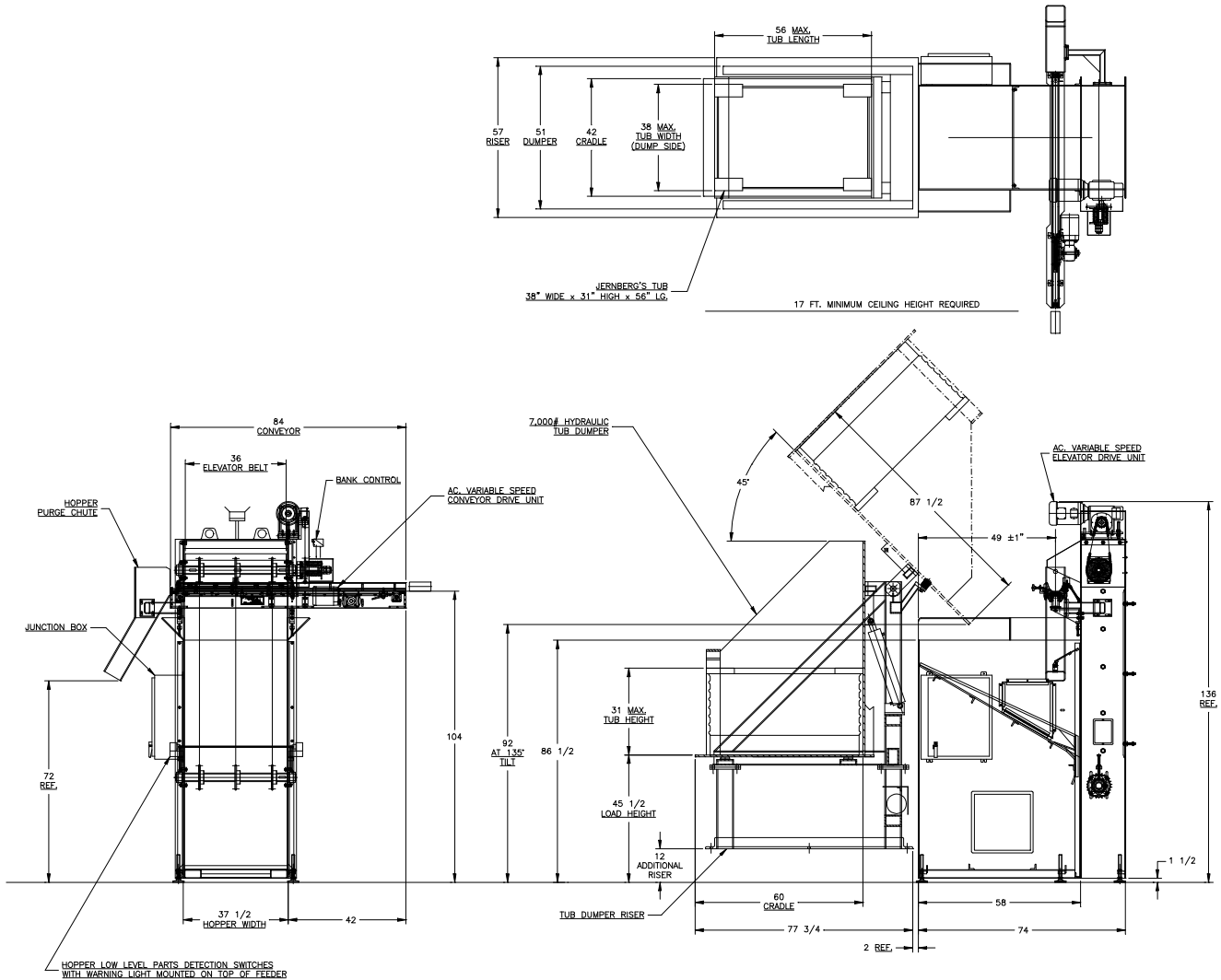


FEEDALL Model 3600-HD Elevating Hopper Feeder w/1650-80RC-84 Cross-Feed Conveyor & 6,000# Hydraulic Tub Dumper



APPLICATION:

Feed from a random loaded, floor mounted hopper. The Saw-Cut and Sheared Billets will be vertically elevated from the hopper and discharged in a continuous stream onto a cross-feed conveyor. The conveyor will transfer the parts in a continuous stream to the customers existing conveyor.

BELT WIDTH:

36" Wide Elevating Belt

DRIVE:

3 HP/AC Motor

PARTS FED (SIZE):

Saw-Cut & Sheared Billets (2.38"-3.50"Ø x 3.25"-7.75" Lg.)

FEED RATE:

15-20 Parts/Minute

MACHINE FED:

Induction Heater