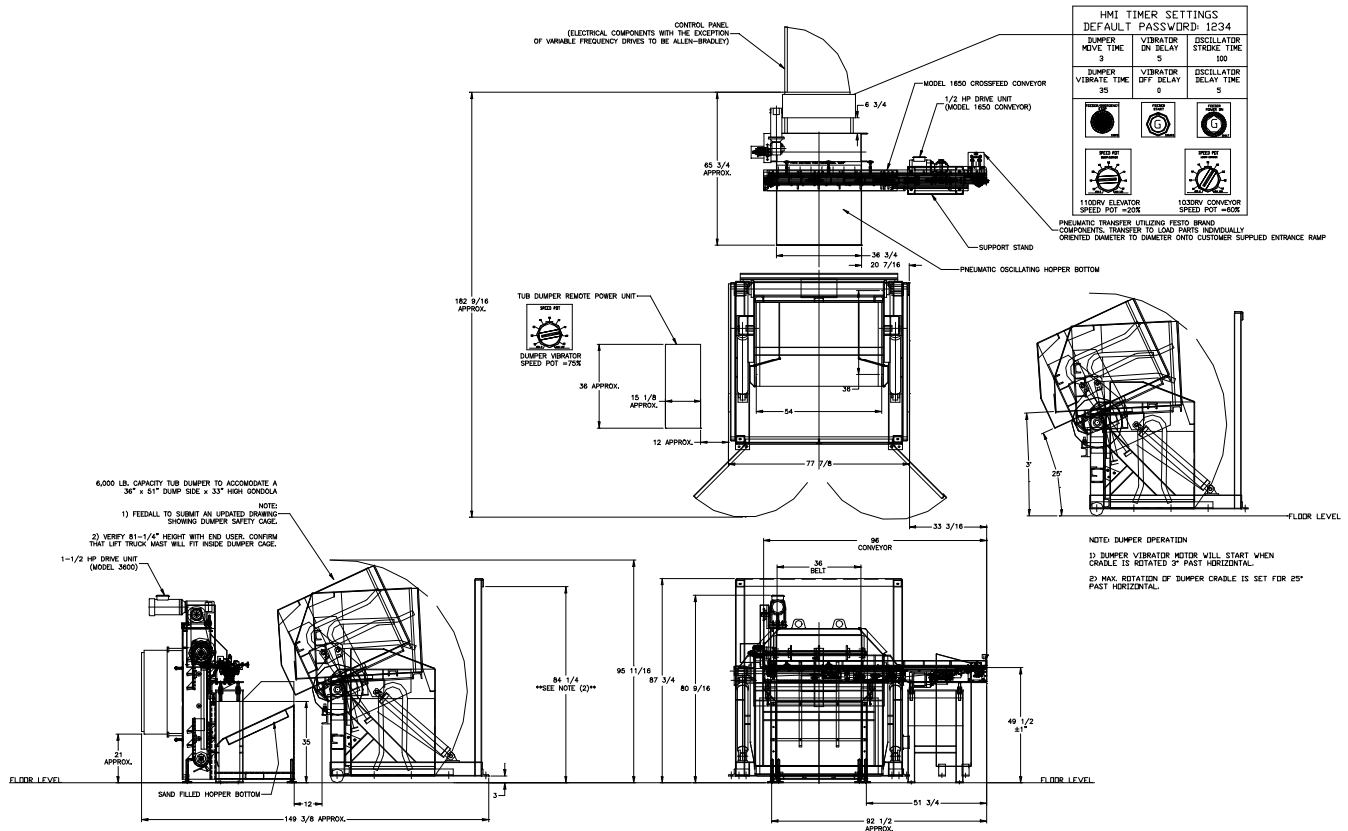


FEEDALL Model 3600 Elevating Hopper Feeder w/1650-80RC-96 Cross-Feed Conveyor & TC-36-36-6,000# Metering Hydraulic Tub Dumper



APPLICATION:

Feed from a random loaded, floor mounted hopper. The track pins will be metered from a tub into the hopper via a low level signal cycling a 6000# vibrating hydraulic tub dumper. Then the parts are vertically elevated from the hopper and discharged in a continuous stream onto a horizontal cross-feed conveyor and fed in a continuous stream to an air-operated transfer device. Then the transfer device will load pins into a load chute.

BELT WIDTH:

36" Wide Elevating Belt

DRIVE:

2 HP/AC Motor

PARTS FED (SIZE):

Excavator Track Bushings (2.73"-3.48"Ø x 5.64"-8.87" Lg.)

FEED RATE:

2 Parts/Minute

MACHINE FED:

KINEFAC CNC Turning Center