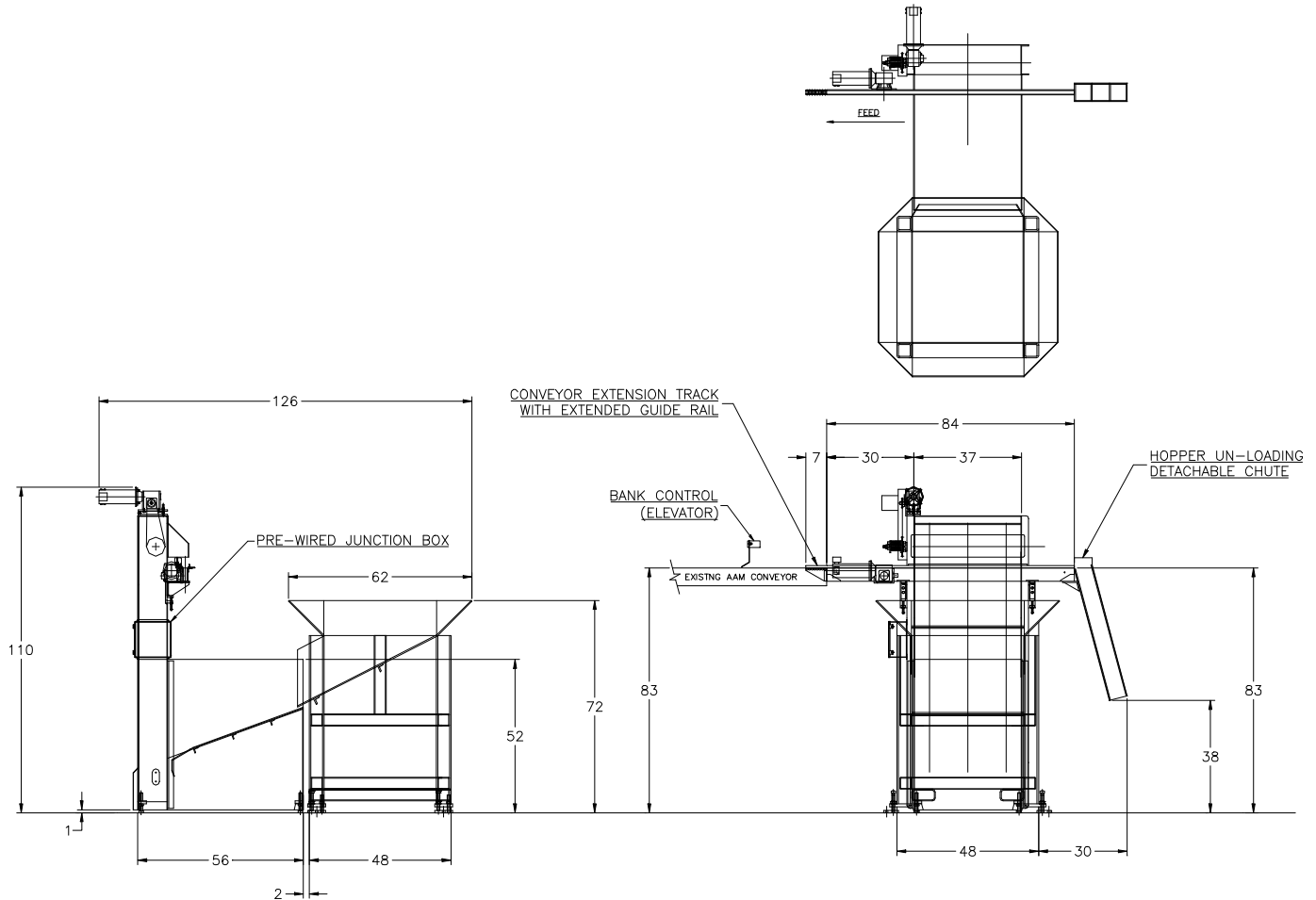


FEEDALL Model 3600 Elevating Hopper Feeder w/1650-80RC-84 Cross-Feed Conveyor



- APPLICATION:** Feed from a random loaded, floor mounted hopper. Parts are vertically elevated from the hopper and discharged in a continuous stream onto an existing roller chain conveyor.
- BELT WIDTH:** 36" Wide Elevating Belt
- DRIVE:** 3/4 HP/AC Motor
- PARTS FED (SIZE):** Steel Billets (1.04"-1.96"Ø x 1.61"-4.68" Lg.)
- FEED RATE:** 90 Inches/Minute
- MACHINE FED:** Induction Heater