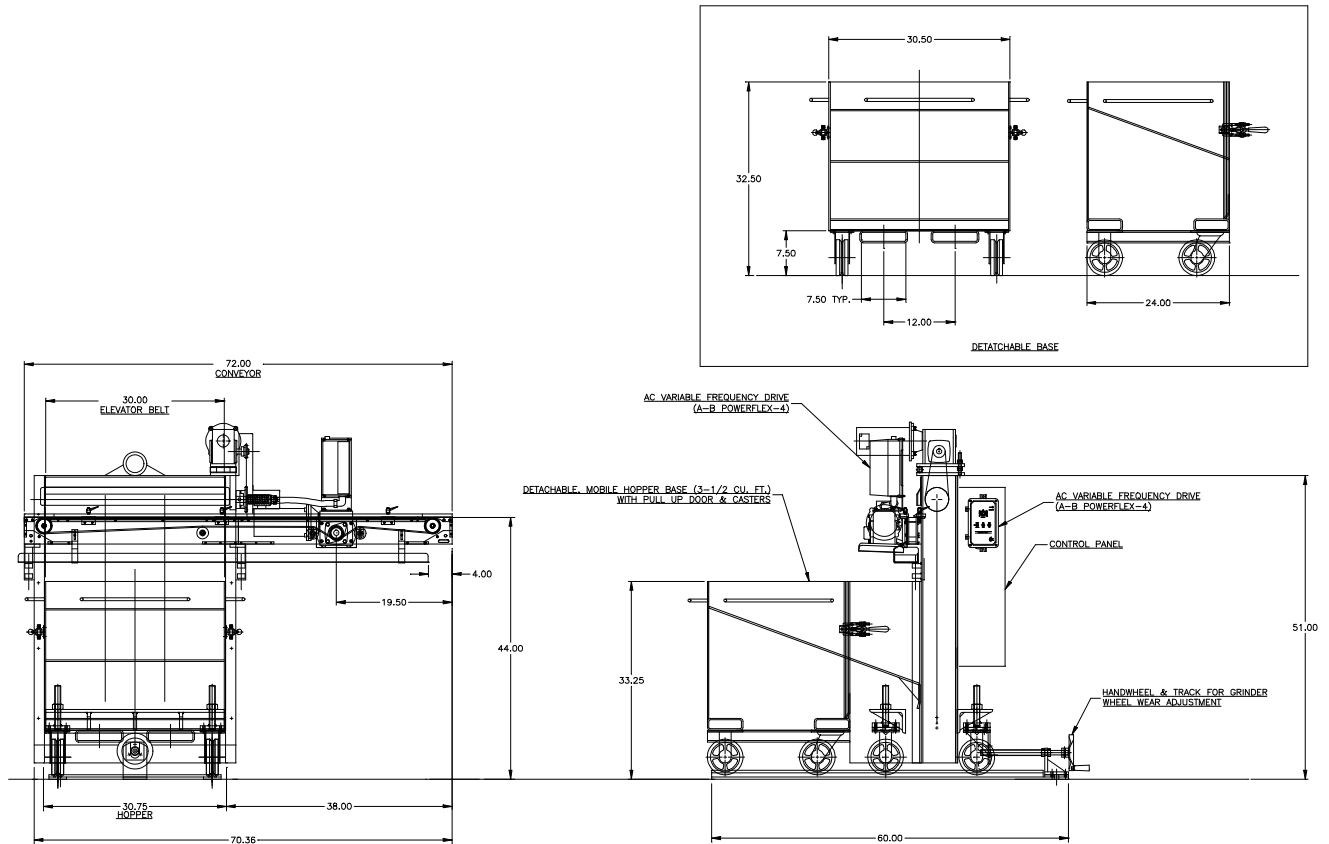


FEEDALL Model 3000 Elevating Hopper Feeder w/1650-1SC-72 Cross-Feed Conveyor



- APPLICATION:** Feed from a manually loaded, floor mounted hopper. The Motor Shafts will be loaded diameter -to- diameter in the part tub. The parts will be elevated from the hopper via a cleated belt and deposited onto a front-end mounted, cross-feed conveyor. The conveyor will translate the parts in a continuous, end-to-end stream to the workrest of a Centerless Grinder.
- BELT WIDTH:** 30" Wide Elevating Belt
- DRIVE:** 3/4 HP/AC Motor w/Variable Frequency Controller
- PARTS FED (SIZE):** Motor Shafts (0.50"Ø x 4.00"-27.00" Lg.)
- FEED RATE:** 200 Inches/Minute
- MACHINE FED:** Centerless Grinder