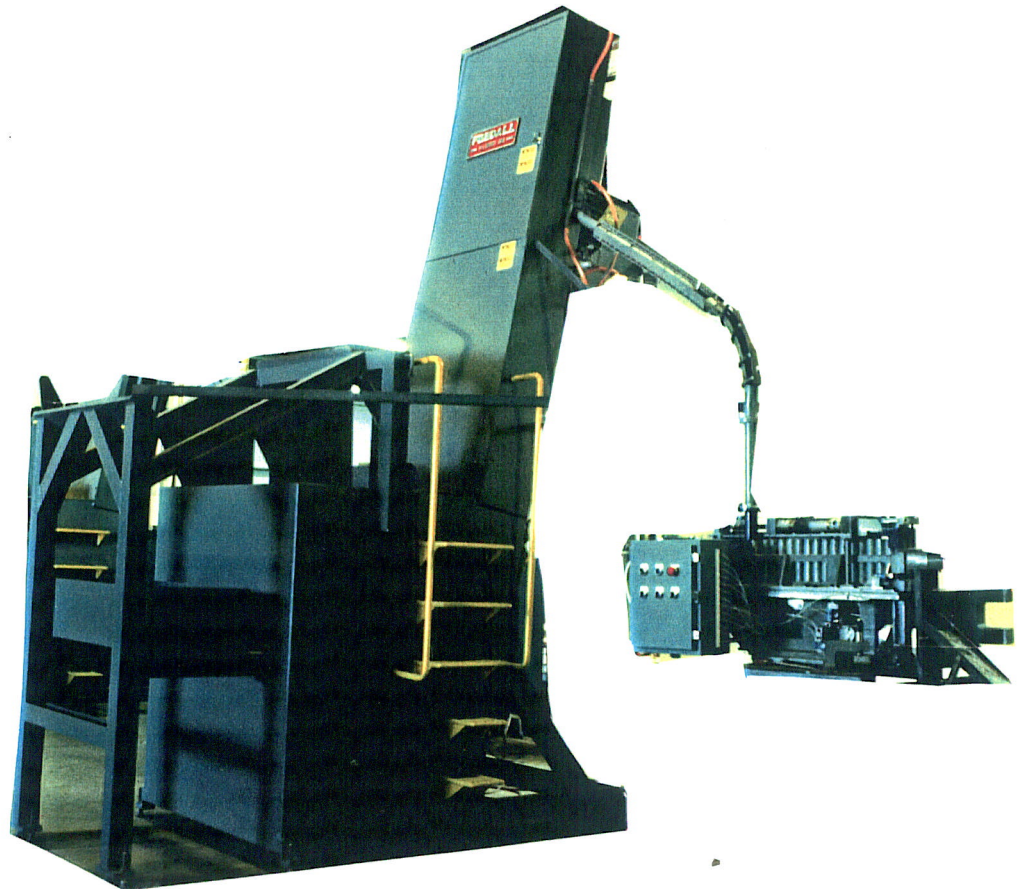


58

SN 10282 MODEL 2500 HD TERR. 2 3/87

***Feedall***  
***automation***



FEED FROM A RANDOM LOADED FLOOR MOUNTED HOPPER, COLD FORGE BILLETS 1 1/2 TO 2" DIA.X 5 1/2 TO 10" LG. THE BILLETS WILL BE ORIENTED END TO END AND FED TO A VERTICAL POSITION 55" ABOVE THE FLOOR, THEN ONE BILLET AT A TIME WILL BE ADVANCED STANDING ON END DIAMETER TO DEAMETER IN A HORIZONTAL MAGAZINE TO A VERTICAL LIFTER. THEN ONE BILLET AT A TIME WILL BE LIFTED AND TRANSFERRED IN TO THE PRESS AT A RATE OF 25 TO 35 PARTS PER MIN.

12" WIDE ELEVATOR BELT, 30 CU. FT. HOPPER.  
DWG. PD 6941 R 3