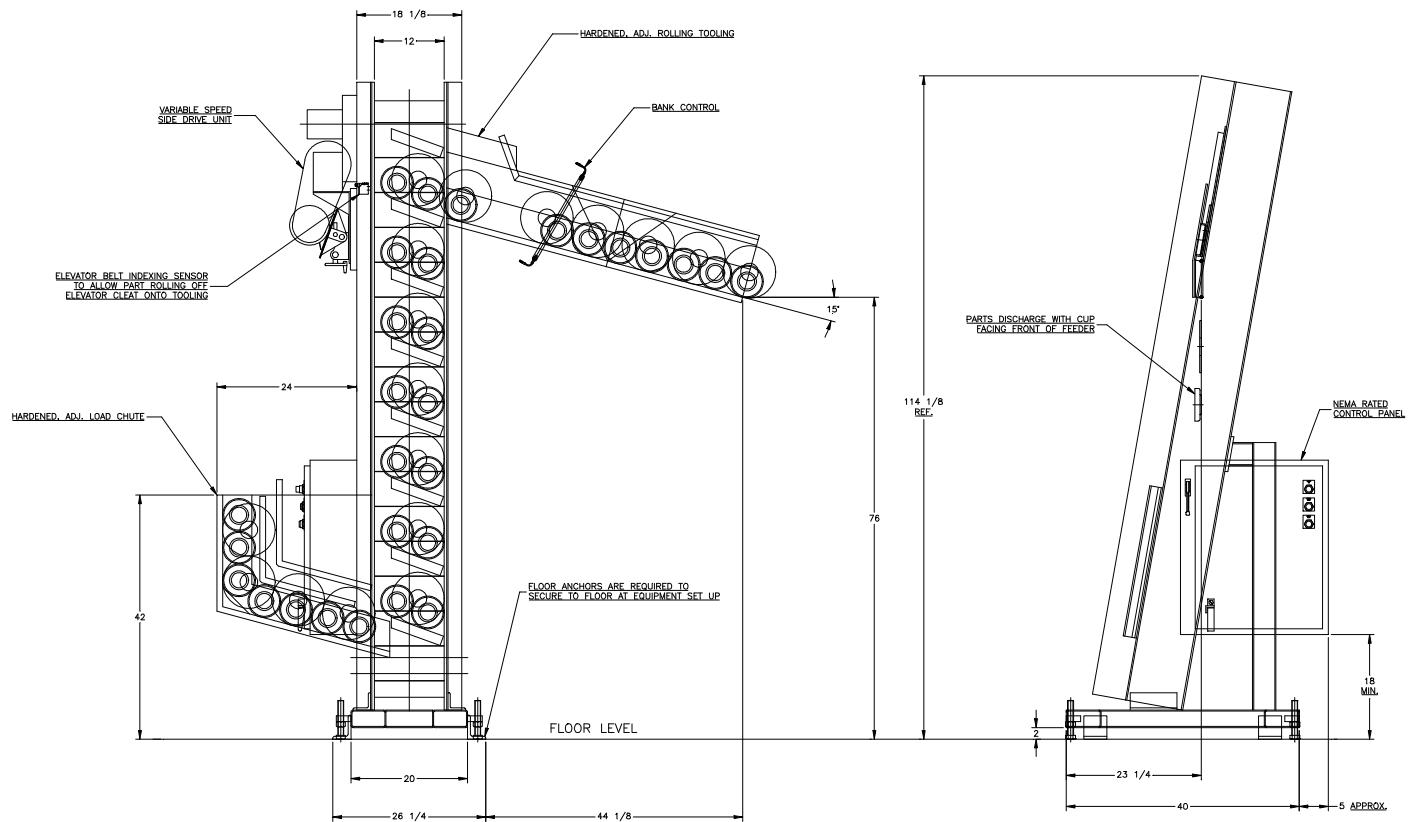


## FEEDALL Model 2500 Elevating Hopper Feeder



- APPLICATION:** Feed from a random loaded, floor mounted hopper. The Pre-Forms will be manually loaded (face select oriented) into an entrance chute, which will load a cleated, indexing belt to elevate and discharge into a chute loading into a Flow Forma Machine.
- BELT WIDTH:** 12" Wide Elevating Belt
- DRIVE:** 3/4 HP/AC Motor
- PARTS FED (SIZE):** Steel Pre-Forms (5.63"-9.00"Ø x 0.31"-1.13" Lg.)
- FEED RATE:** 2 Parts/Minute
- MACHINE FED:** Extrusion Press