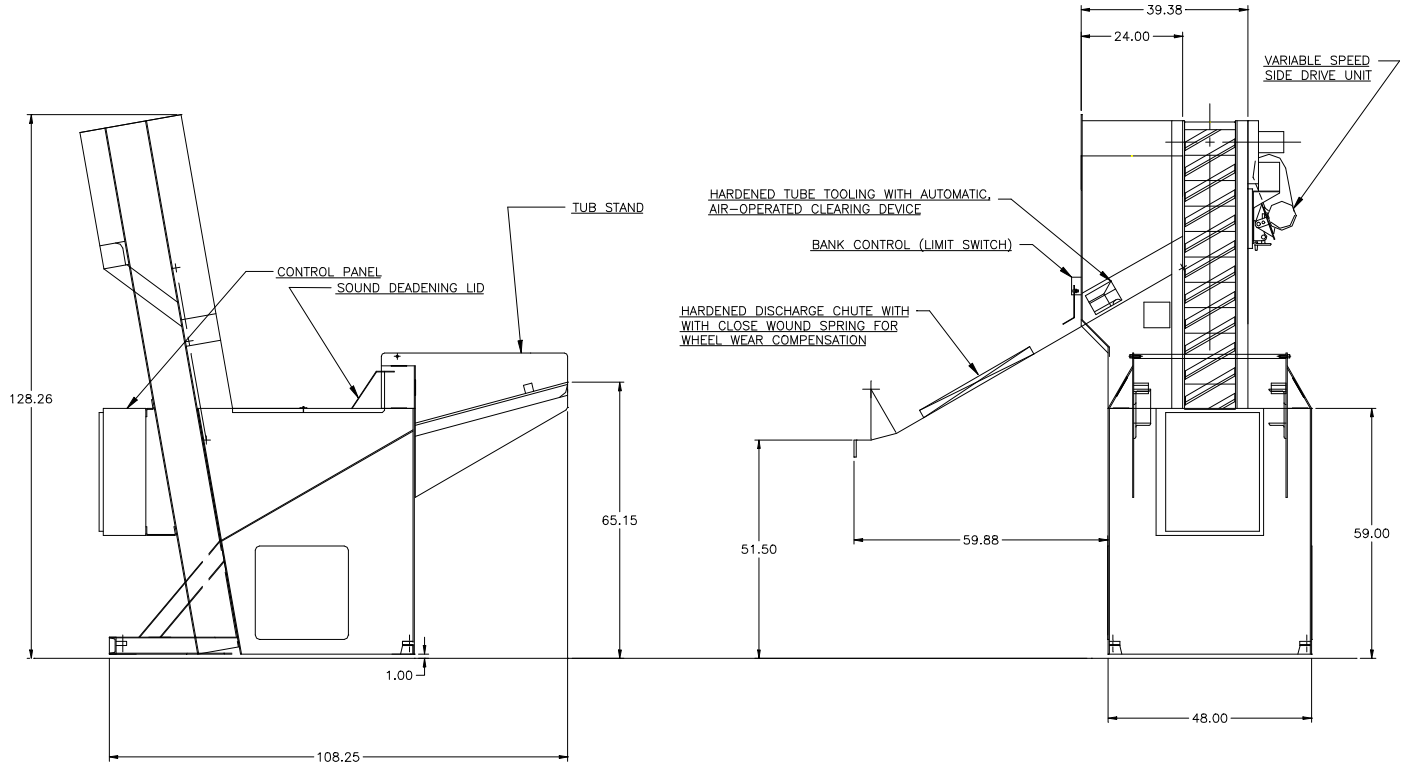


FEEDALL Model 2500-D Elevating Hopper Feeder



- APPLICATION:** Feed from a random loaded, floor mounted hopper. The Differential Shafts will be elevated from the hopper via a cleated belt and fed in a continuous, end-to-end stream to the workrest of a Centerless Grinder.
- BELT WIDTH:** 12" Wide Elevating Belt
- DRIVE:** 3/4 HP/AC Motor
- PARTS FED (SIZE):** Differential Pinion Shafts (0.710"-0.929"Ø x 4.41"-5.79" Lg.)
- FEED RATE:** 90-120 Inches/Minute
- MACHINE FED:** Centerless Grinder