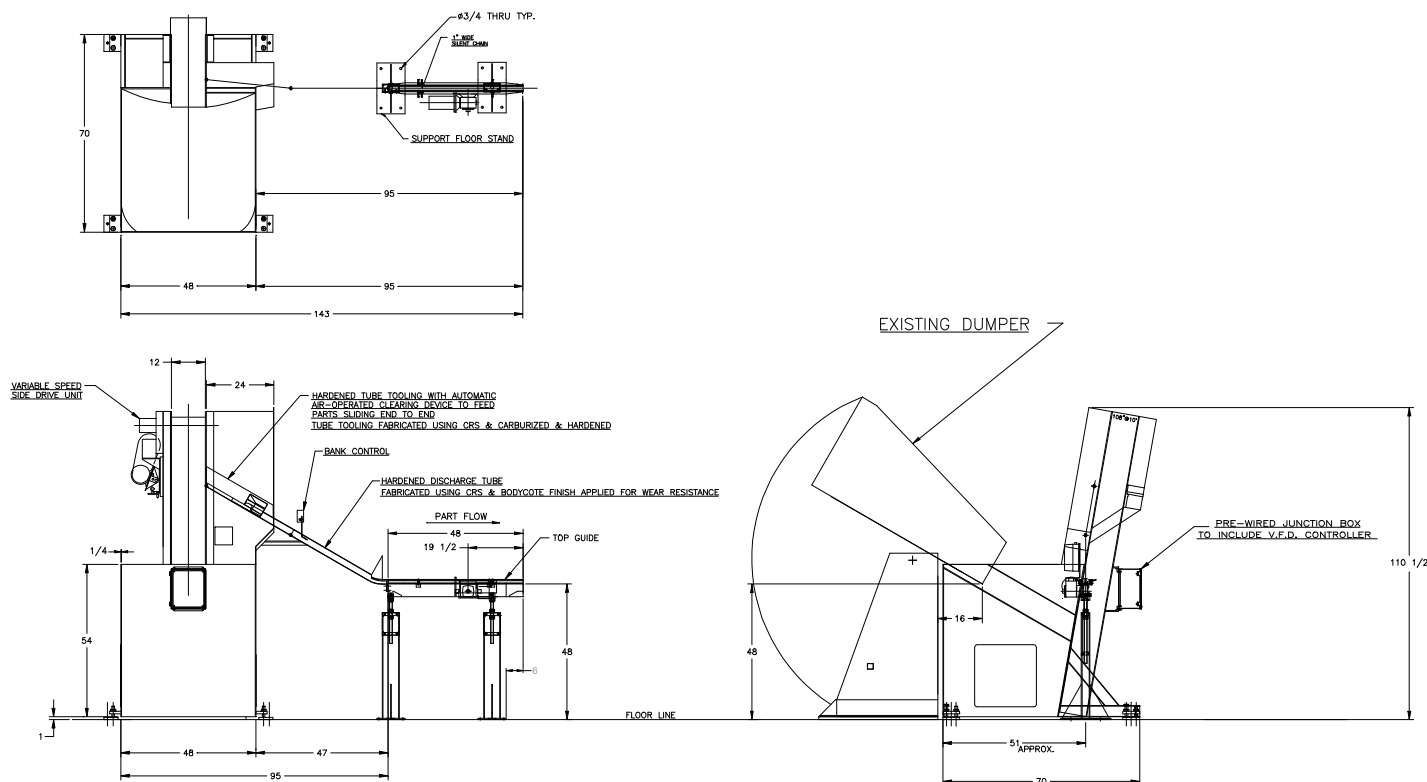


***FEEDALL* Model 2500-C Elevating Hopper Feeder
w/1650-1SC-48 Entrance Conveyor**



APPLICATION:	Feed from a random loaded, floor mounted hopper. The Steel Tubes will be elevated from the hopper via a cleated belt and fed oriented in a continuous rolling stream and discharged with axis horizontal on existing conveyor.
BELT WIDTH:	12" Wide Elevating Belt
DRIVE:	3/4 HP/AC Motor
PARTS FED (SIZE):	Suspension Bushing Inner Metal Tubes (18.00mm-33.00mmØ x 27.00mm-99.85mm Lg.)
FEED RATE:	48-168 Parts/Minute
MACHINE FED:	VMI-MTI Roll Coater