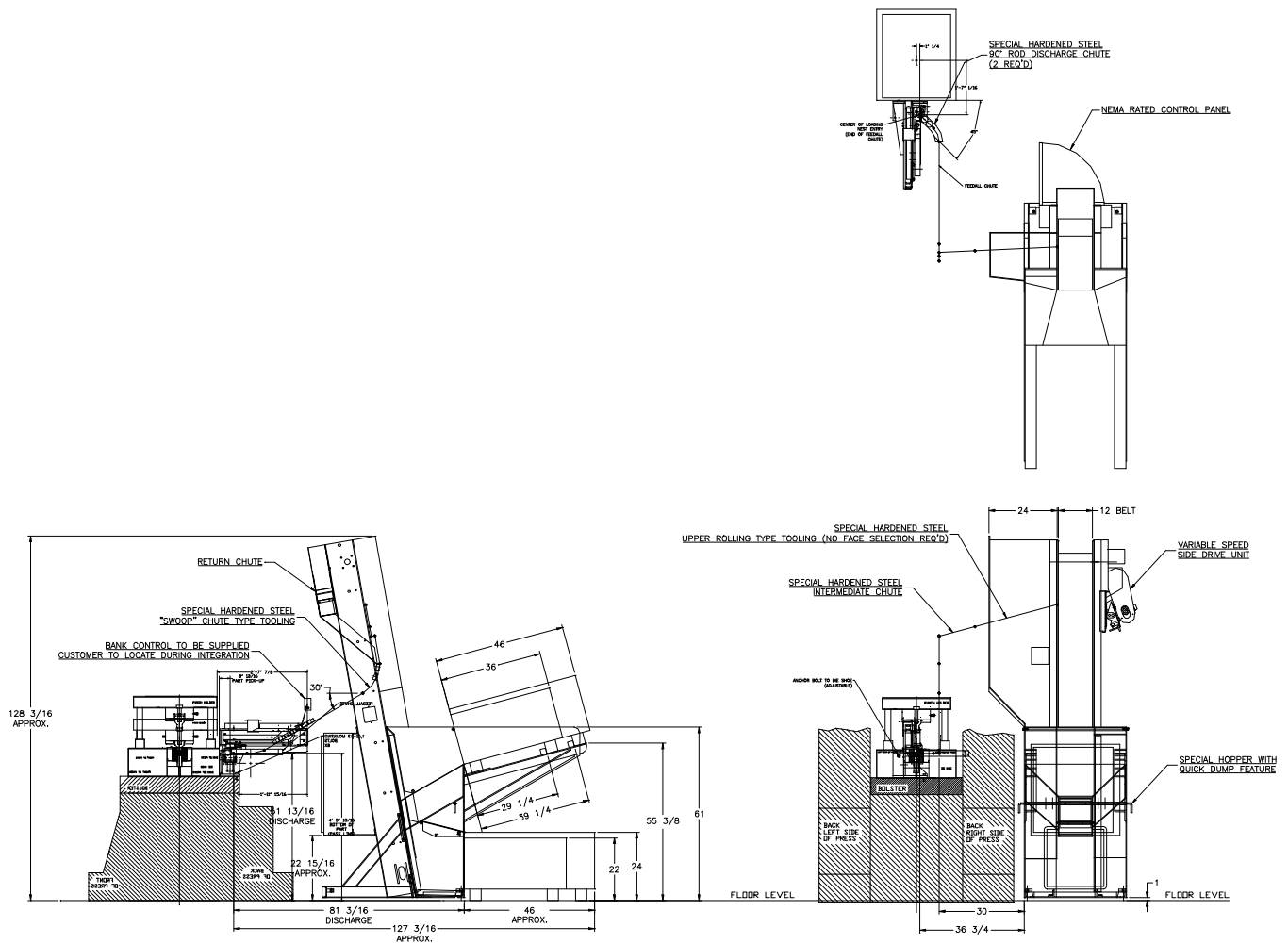


FEEDALL Model 2500-C Elevating Hopper Feeder



- APPLICATION:** Feed from a random loaded, floor mounted hopper. The Saw-Cut Steel Slugs will be elevated from the hopper via a cleated belt and discharged in a continuous, diameter-to-diameter stream laying flat with axis vertical.
- BELT WIDTH:** 12" Wide Elevating Belt
- DRIVE:** 3/4 HP/AC Motor
- PARTS FED (SIZE):** Saw-Cut Steel Slugs (1.736"-2.344"Ø x 0.810"-1.129" Lg.)
- FEED RATE:** 30 Parts/Minute
- MACHINE FED:** Press