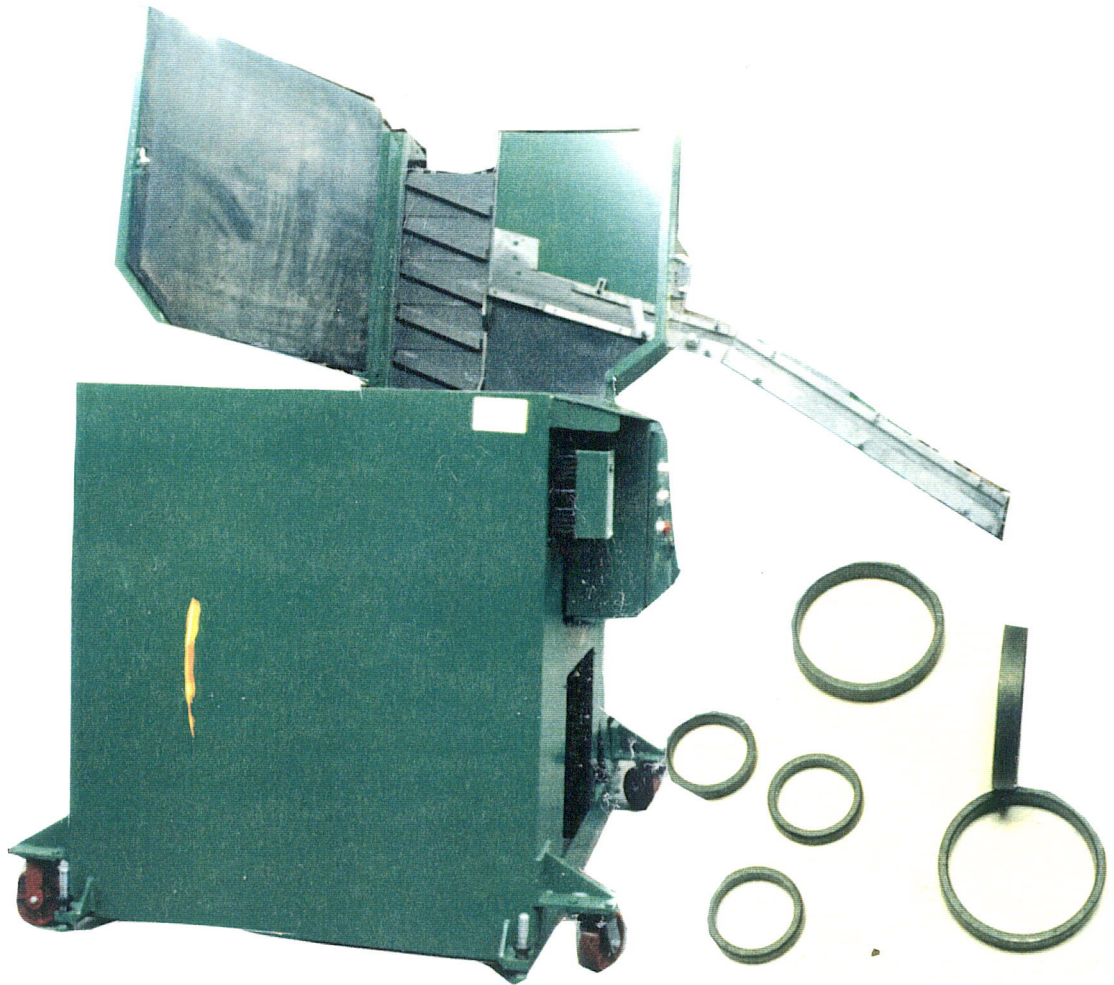


37

SN 10617 MODEL 2500 C TERR. 4 2/88

**Feedall**  
*automation*



FEED FROM A RANDOM LOADED FLOOR MOUNTED HOPPER,  
VALVE SEAT INSERTS .987 TO 2.06" DIA. X .200 TO .400 " THICK.  
THE PARTS WILL BE ELEVATED FROM THE HOPPER THEN  
ORIENTED ROLLING DIAMETER TO DIAMETER IN A SINGLE  
STREAM FED TO A DOUBLE DISC  
FACE GRINDER AT 42" ABOVE THE FLOOR AT A FEED RATE  
OF 300 TO 400 PER. MIN. 12" WIDE ELEVATOR BELT, 14 CU. FT.  
HOPPER.  
DWG. P 7282