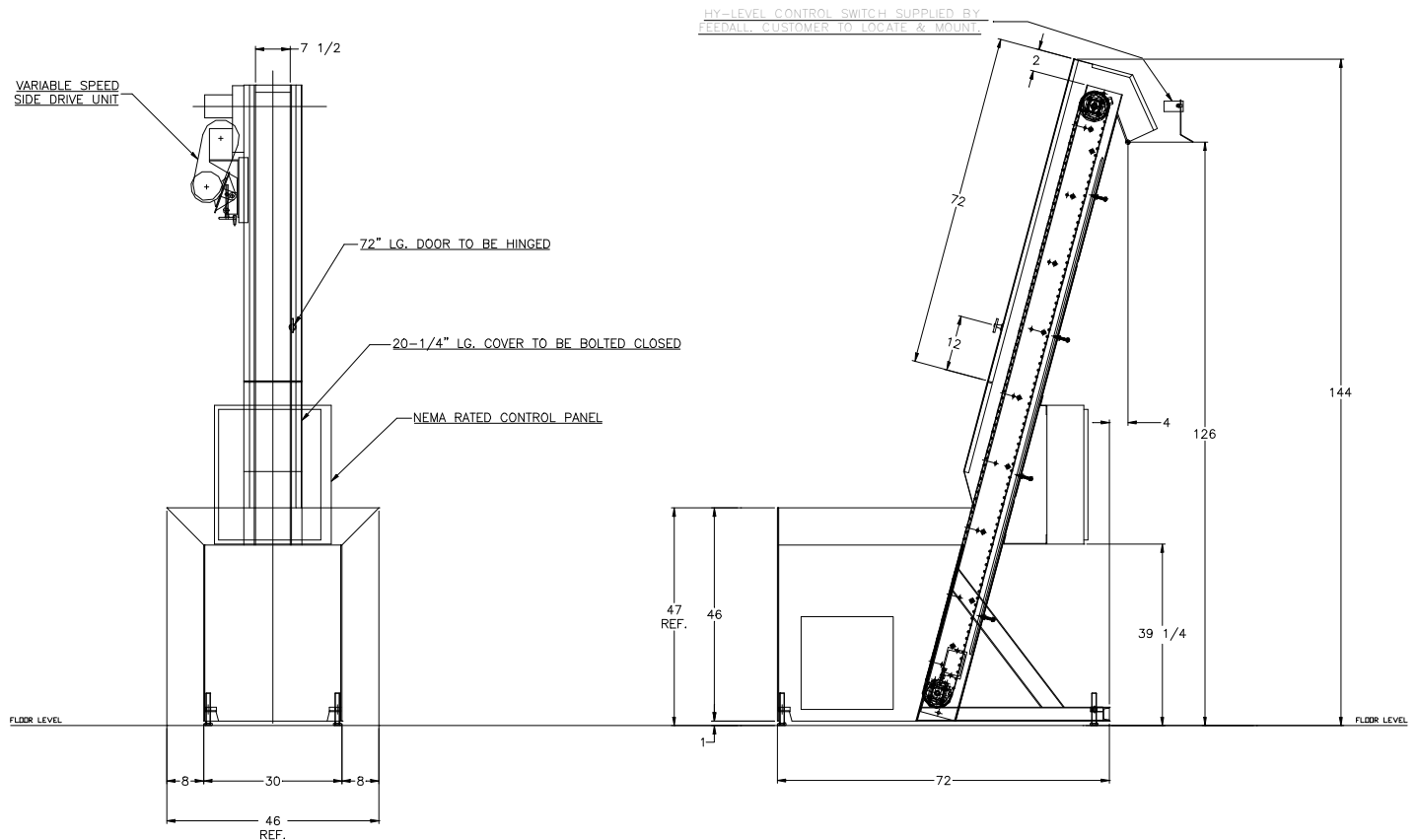


FEEDALL Model 2400-D Elevating Bulk Hopper Feeder



- APPLICATION:** Feed from a random loaded, floor mounted hopper. The Finished Hexagon Nuts will be elevated out of the hopper and discharged over the top and out the backside with random orientation.
- BELT WIDTH:** 7-1/2" Wide Table-Top Chain
- DRIVE:** 1/2 HP/AC Motor
- PARTS FED (SIZE):** Finished Hexagon Nuts (5/8" to 1-1/4" Sizes)
- FEED RATE:** 800-1,250 Parts/Minute
- MACHINE FED:** Bulk Orienter