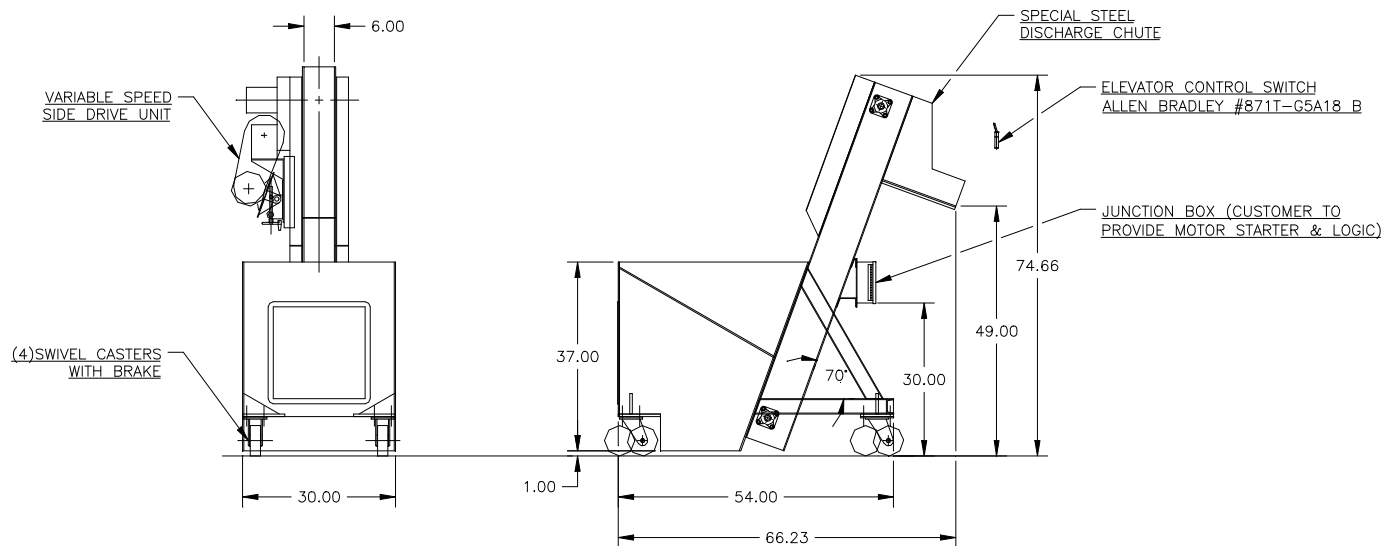


FEEDALL Model 2400-C Elevating Bulk Hopper Feeder



APPLICATION: Feed from a random loaded, floor mounted hopper. The parts will be elevated from the hopper via a cleated belt and discharged in a rear chute.

BELT WIDTH: 7-1/2" Wide Elevating Belt

DRIVE: 1/2 HP/AC Motor

PARTS FED (SIZE): Tapered Roller Bearings (0.482"-0.541"Ø x 0.80"-1.00" Lg.)

FEED RATE: 60 Parts/Minute

MACHINE FED: Bulk Orienter