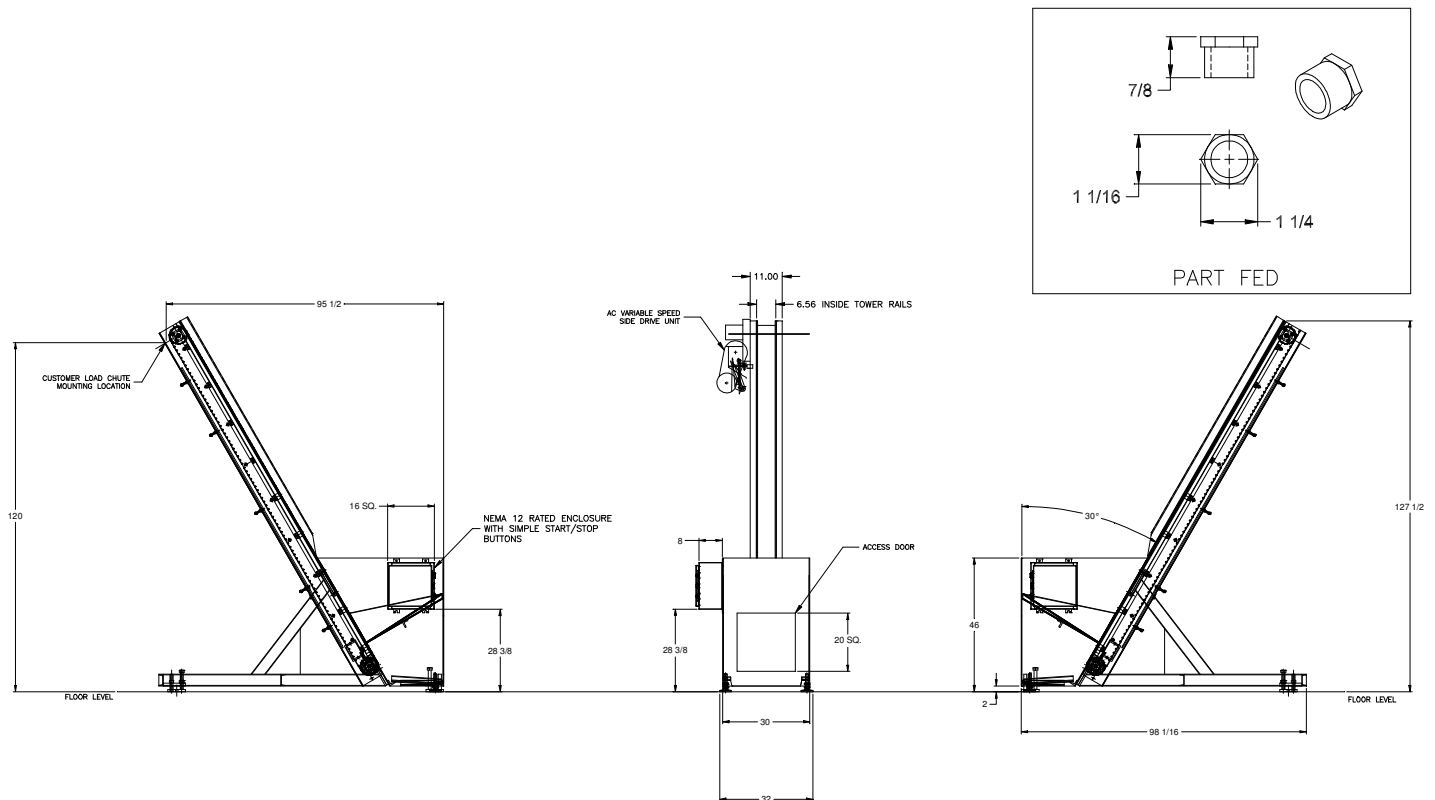


## FEEDALL Model 2400-C Elevating Bulk Hopper Feeder



<b>APPLICATION:</b>	Feed from a random loaded, floor mounted hopper. Hex Head Fasteners will be elevated from the hopper via a cleated belt and discharged randomly into customer's load chute.
<b>BELT WIDTH:</b>	6" Wide Table-Top Chain
<b>DRIVE:</b>	1/2 HP/AC Motor
<b>PARTS FED (SIZE):</b>	Hex Head Fasteners (1.063"Ø x 0.875" Lg.)
<b>FEED RATE:</b>	20 Parts/Minute
<b>MACHINE FED:</b>	Vibratory Bowl