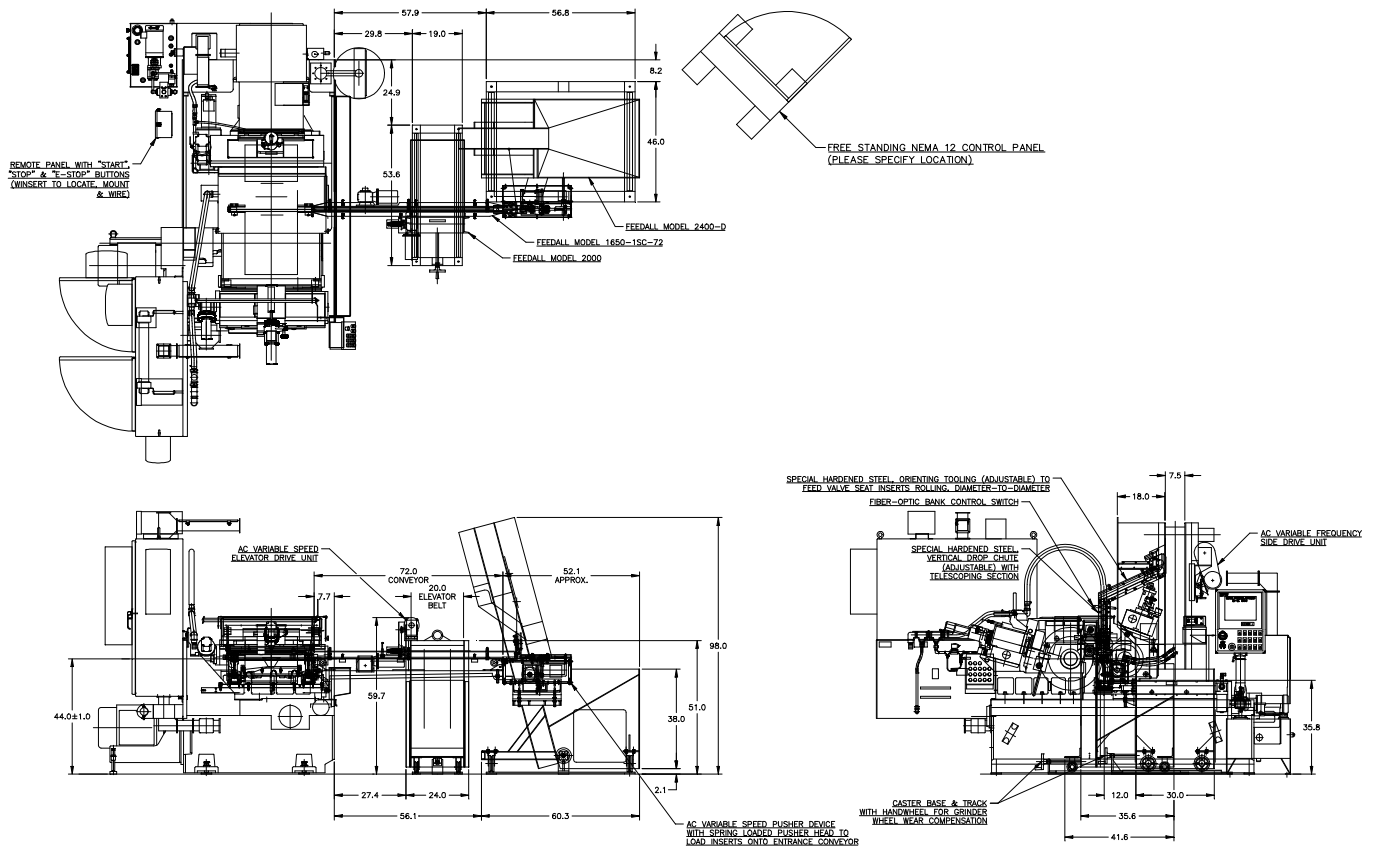


FEEDALL Model 2400-D Elevating Hopper Feeder w/Model 2000 Elevating Hopper Feeder & 1650-1SC-72 Entrance Conveyor



- APPLICATION:** Feed from a random loaded, floor mounted hopper, Valve Seat Inserts. Inserts will be elevated from the hopper via a cleated belt and discharged in a continuous stream. The parts will be deposited in a continuous, face-to-face stream to the workrest of a Landis Model 350-20 RK Centerless Grinder.
- BELT WIDTH:** 7-1/2" Wide Table-Top Chain
- DRIVE:** 1/2 HP/AC Motor
- PARTS FED (SIZE):** Valve Seat Inserts (0.750"-2.63"Ø x 0.17"-0.38" Lg.)
- FEED RATE:** 55-100 Inches/Minute
- MACHINE FED:** LANDIS Model 350-20 RK Centerless Grinder