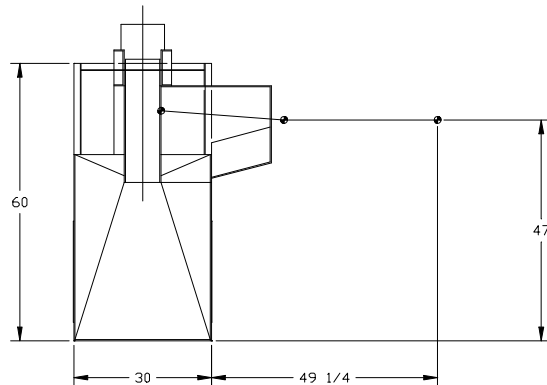
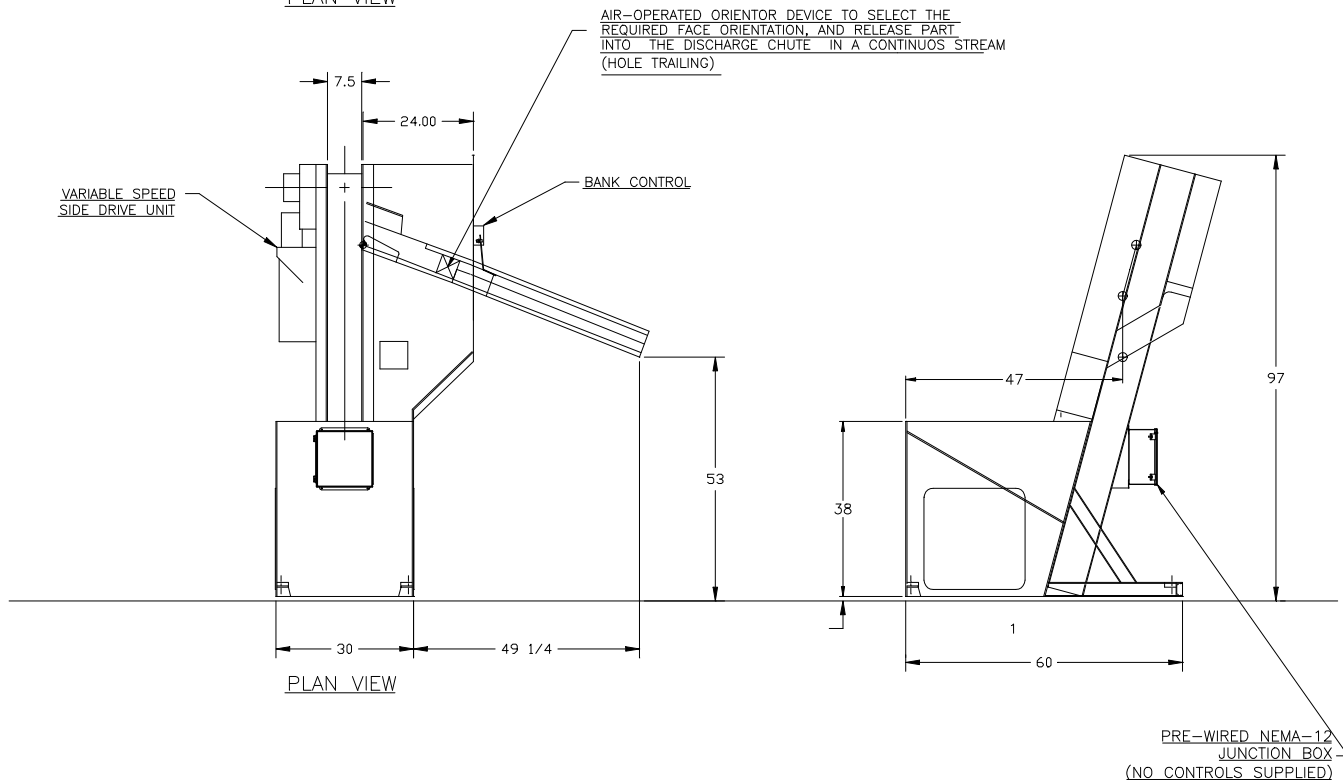


## FEEDALL Model 2400-D Elevating Hopper Feeder



PLAN VIEW



- APPLICATION:** Feed from a random loaded, floor mounted hopper. The Latches will be elevated from the hopper via a cleated belt and discharged in a continuous stream "hole trailing" to an inspection station.
- BELT WIDTH:** 7-1/2" Wide Table-Top Chain
- DRIVE:** 1/2 HP/AC Motor
- PARTS FED (SIZE):** Parking Pawl Latches
- FEED RATE:** 10 Parts/Minute
- MACHINE FED:** Inspection Machine