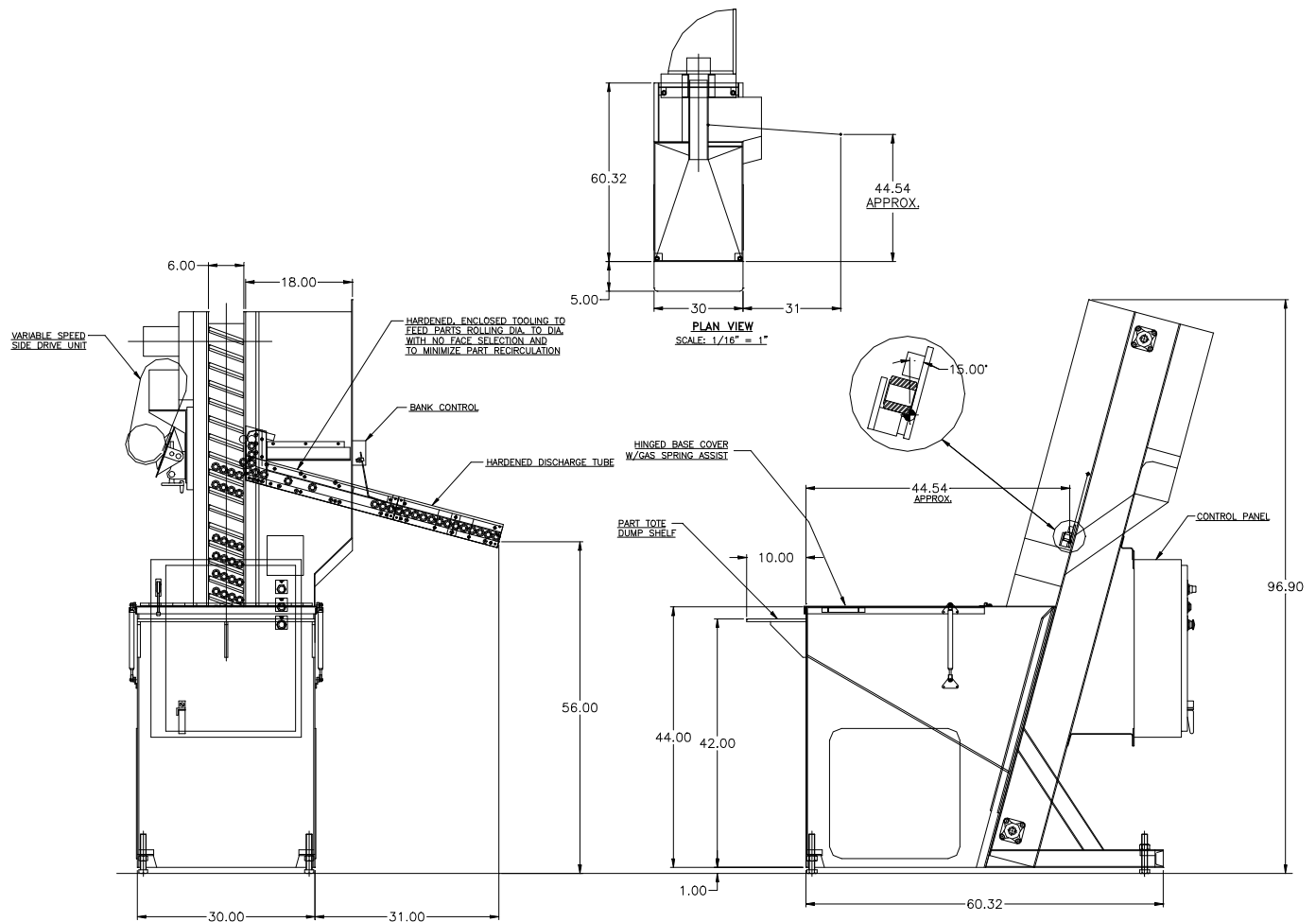


FEEDALL Model 2400-C Elevating Hopper Feeder



APPLICATION:	Feed from a random loaded, floor mounted hopper. The Gear Blanks will be elevated from hopper via a cleated belt and discharged rolling, in a continuous, diameter-to-diameter stream.
BELT WIDTH:	6" Wide Table-Top Chain
DRIVE:	1/2 HP/AC Motor
PARTS FED (SIZE):	Planetary Gear Blanks (1.415"Ø x 1.19" Lg.)
FEED RATE:	6 Parts/Minute
MACHINE FED:	Gear Shaper