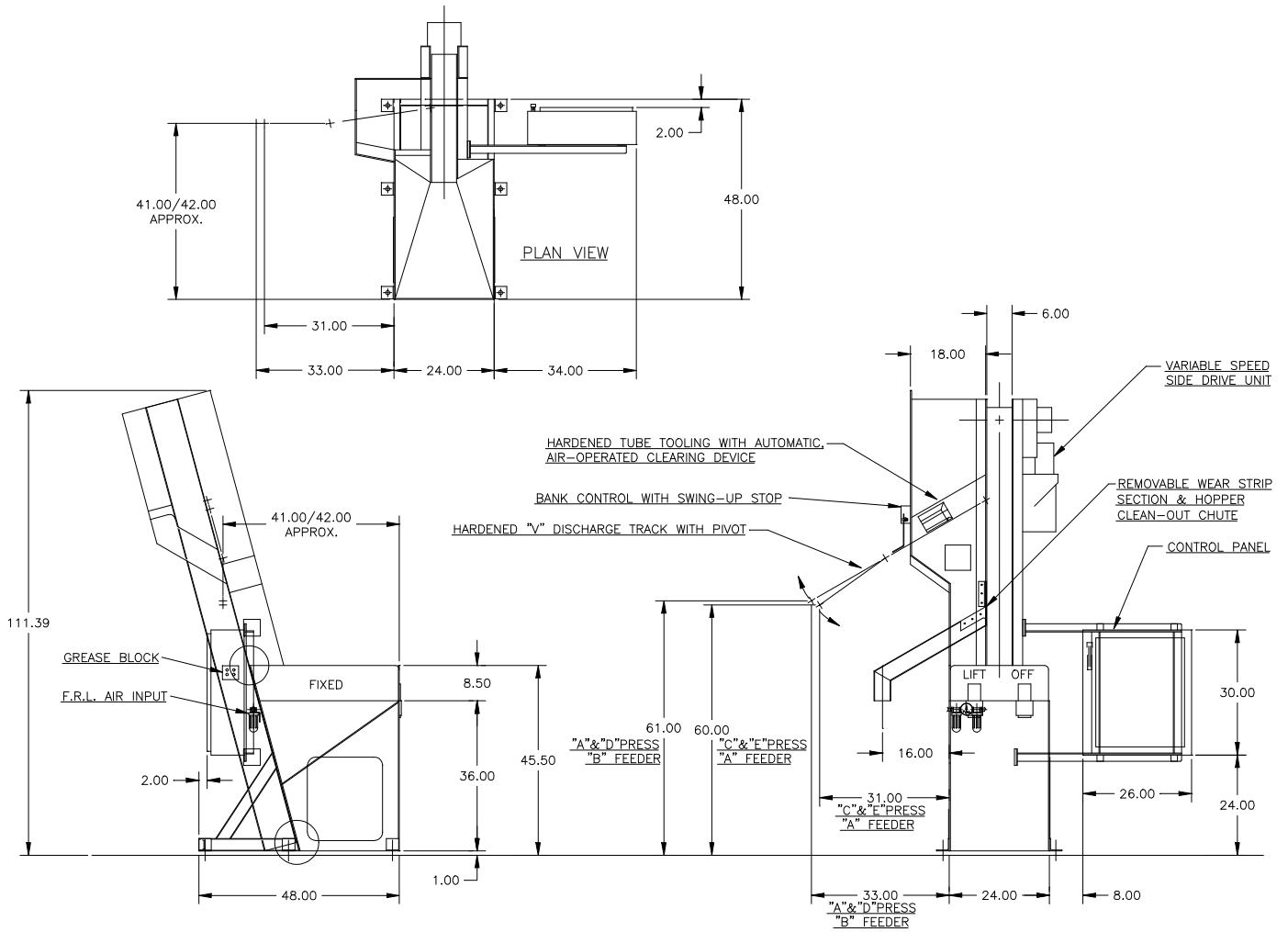


FEEDALL Model 2400-C Elevating Hopper Feeder



- APPLICATION:** Feed from a random loaded, floor mounted hopper. Sheared Steel Billets will be elevated from the hopper via a cleated belt and discharged in a continuous rolling stream.
- BELT WIDTH:** 6" Wide Table-Top Chain
- DRIVE:** 1/2 HP/AC Motor
- PARTS FED (SIZE):** Sheared Steel Billets (0.551"-0.826"Ø x 1.114"-1.362" Lg.)
- FEED RATE:** 40 Parts/Minute
- MACHINE FED:** Induction Heater