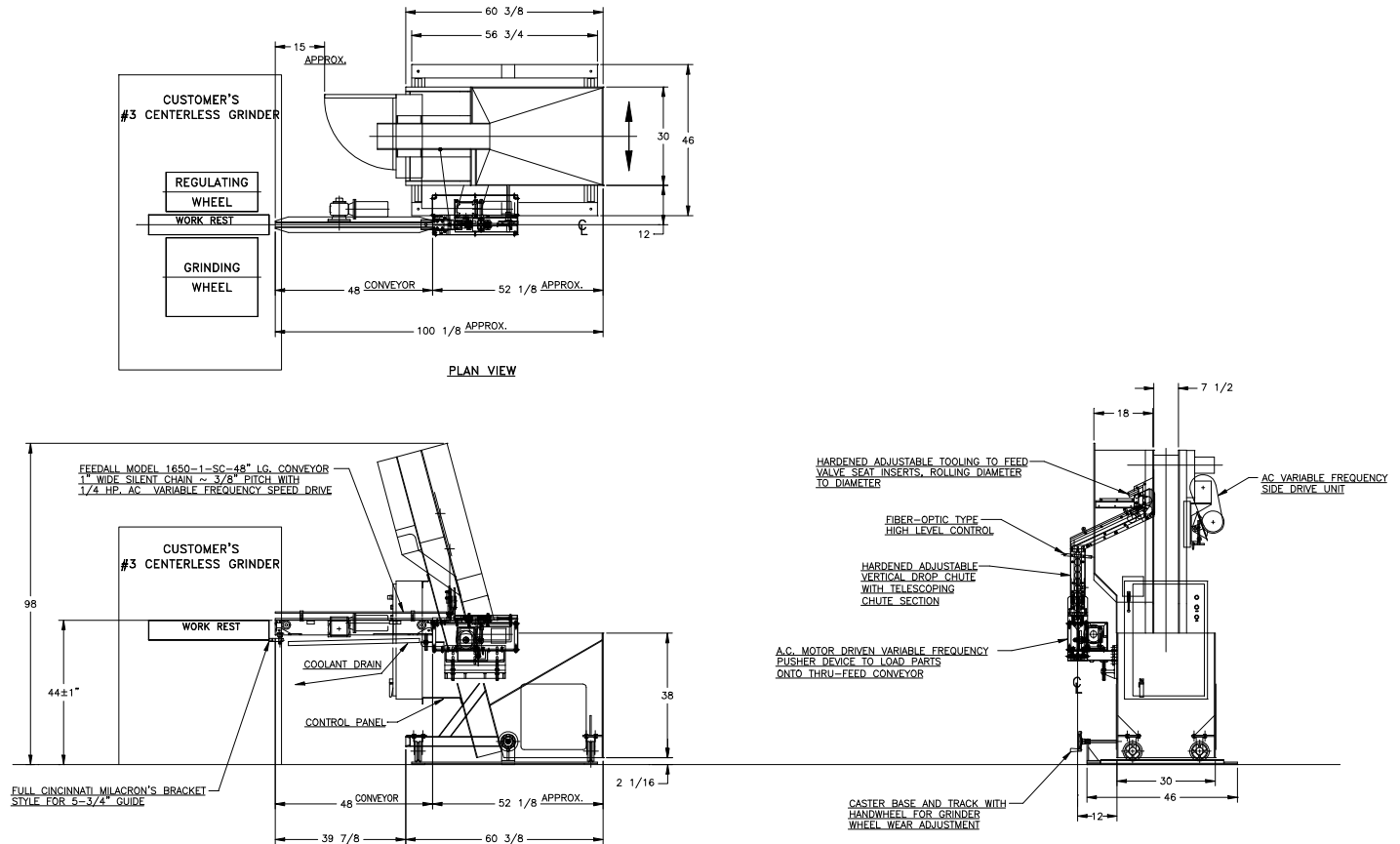


## FEEDALL Model 2400-D Elevating Hopper Feeder w/1650-1SC-48 Entrance Conveyor



- APPLICATION:** Feed from a random loaded, floor mounted hopper. The Valve Seat Inserts will be oriented in a continuous, diameter-to-diameter, vertical stack and fed into a variable speed pusher device. The pusher device will maintain a level of parts on an Entrance Conveyor. The Entrance Conveyor will convey the parts in a continuous, end-to-end stream to the workrest of a Centerless Grinder.
- BELT WIDTH:** 7-1/2" Wide Table-Top Chain
- DRIVE:** 1/2 HP/AC Motor
- PARTS FED (SIZE):** Valve Seat Inserts (0.75"-2.25"Ø x 0.188"-0.375" Thick)
- FEED RATE:** 35-45 Inches/Minute
- MACHINE FED:** Centerless Grinder