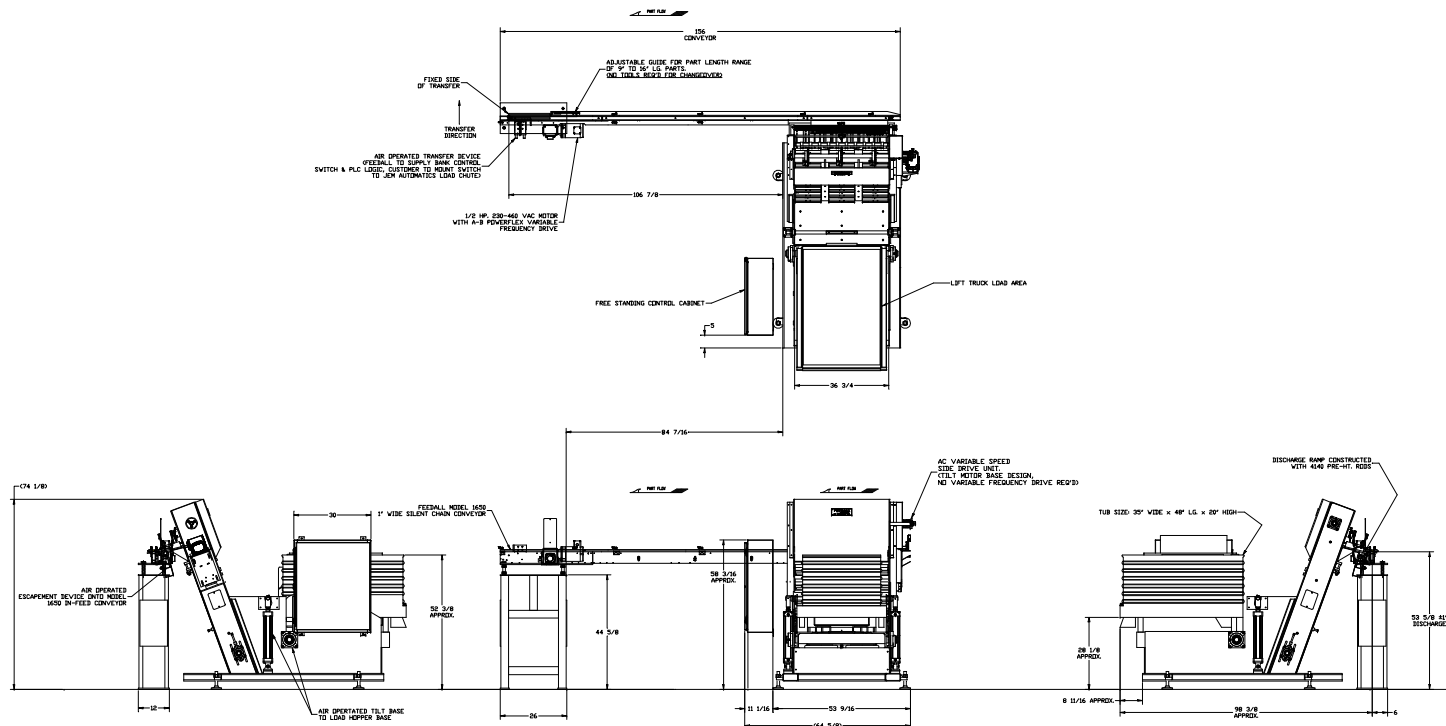


FEEDALL Model 2236 Elevating Hopper Feeder w/1650-1SC-156 Cross-Feed Conveyor



- APPLICATION:** Feed from a manually loaded, floor mounted hopper, Agitator Shaft Blanks. Blanks will be loaded via drop bottom gondolas into hopper via an air-operated tilting stand. The blanks will be elevated from the hopper via a cleated belt, carried over the top of the elevator and escaped onto a rear mounted, Cross-Feed Conveyor in a continuous, end-to-end stream. An air-operated transfer device will load one part at a time into the load chute of a Multi-Spindle Chucker.
- BELT WIDTH:** 36" Wide Elevating Belt
- ELEVATOR DRIVE:** 3/4 HP/AC Motor w/Variable Speed Drive and Overload Relief Clutch
- CONVEYOR DRIVE:** 1/2 HP/AC Motor w/Variable Frequency Controller
- PARTS FED (SIZE):** Agitator Shaft Blanks (0.75"Ø x 9"-16" Lg.)
- FEED RATE:** 10 Parts/Minute
- MACHINE FED:** ACME-GRIDLEY 3/4" RA-8 Multi-Spindle Chucker