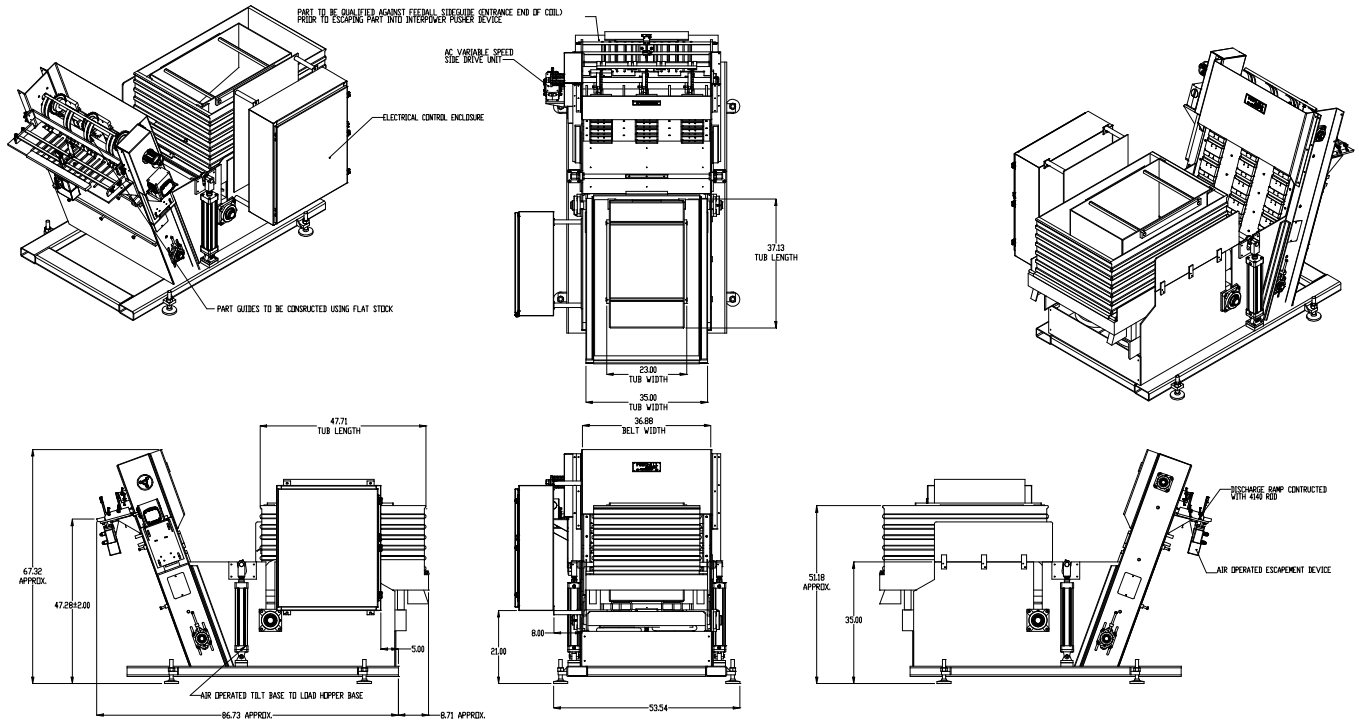


## FEEDALL Model 2236 Elevating Hopper Feeder



- APPLICATION:** Feed from a random loaded, floor mounted hopper. The bars will be loaded into the hopper via an air operated tilting stand. The bars will then be elevated from the hopper via a cleated belt and deposited onto a rear mounted accumulation ramp. An air operated escapement device will load one part at a time into Inter-Power's pusher device.
- BELT WIDTH:** 36" Elevating Belt
- DRIVE:** 3/4 HP/AC Motor
- PARTS FED (SIZE):** Sheared Steel Bars (0.56"-0.94"Ø x 8"-18" Lg.)
- FEED RATE:** 10 Parts/Minute
- MACHINE FED:** Induction Heater