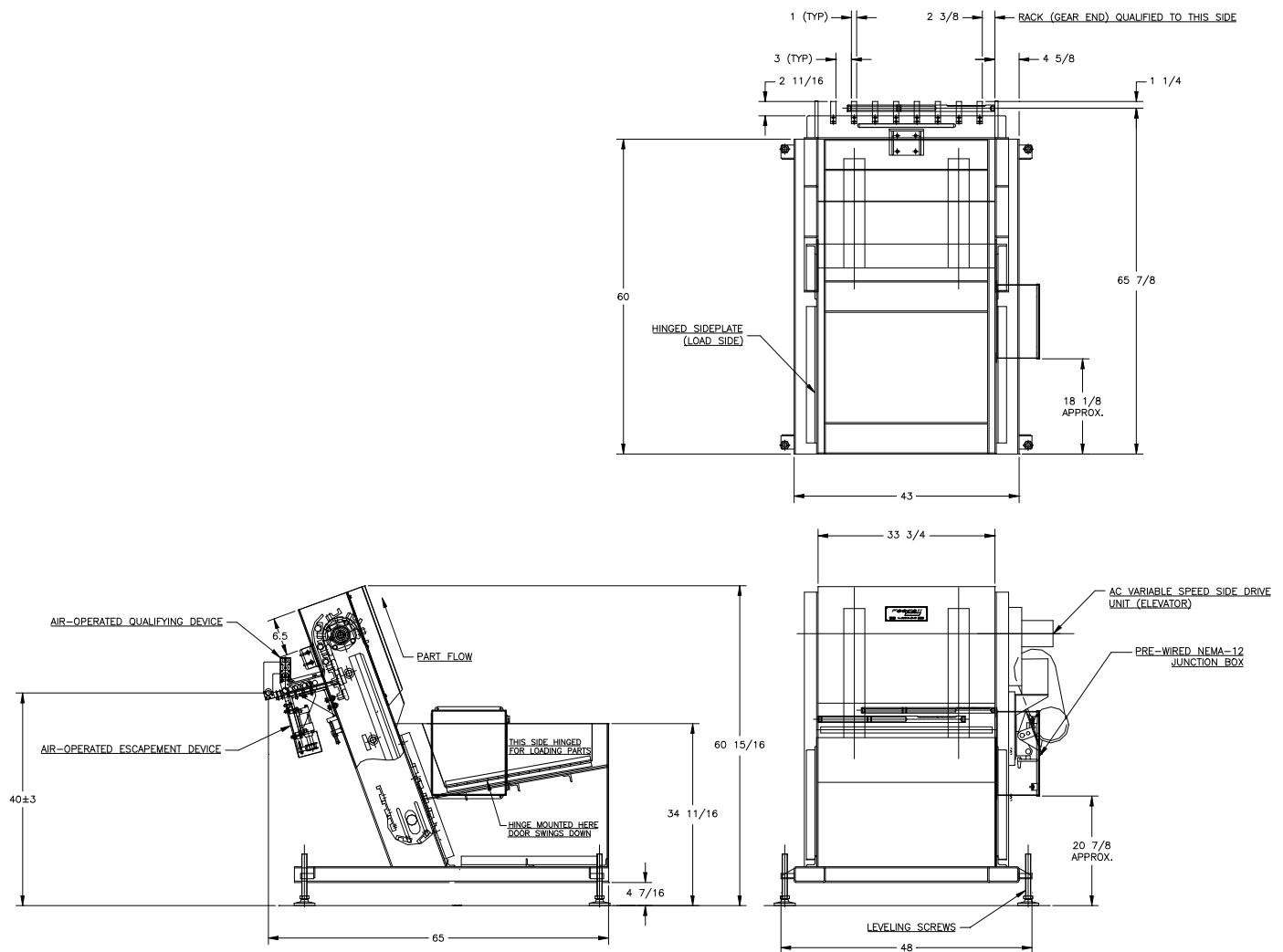


FEEDALL Model 2233 Elevating Hopper Feeder



APPLICATION:

Feed from a manually loaded, floor mounted hopper. The Steering Racks will be elevated from the hopper via a cleated belt and carried over the top of the elevator and deposited onto a rear mounted, accumulation ramp in a continuous, diameter-to-diameter stream. An air-operated escapement device will load one part at a time into rear mounted, V-Nest for customer pick off via lift and carry transfer.

BELT WIDTH:

33" Wide Elevating Belt

DRIVE:

3/4 HP/AC Motor

PARTS FED (SIZE):

Steering Racks (0.98"-1.26"Ø x 23.68"-29.79" Lg.)

FEED RATE:

3 Parts/Minute

MACHINE FED:

Straightener