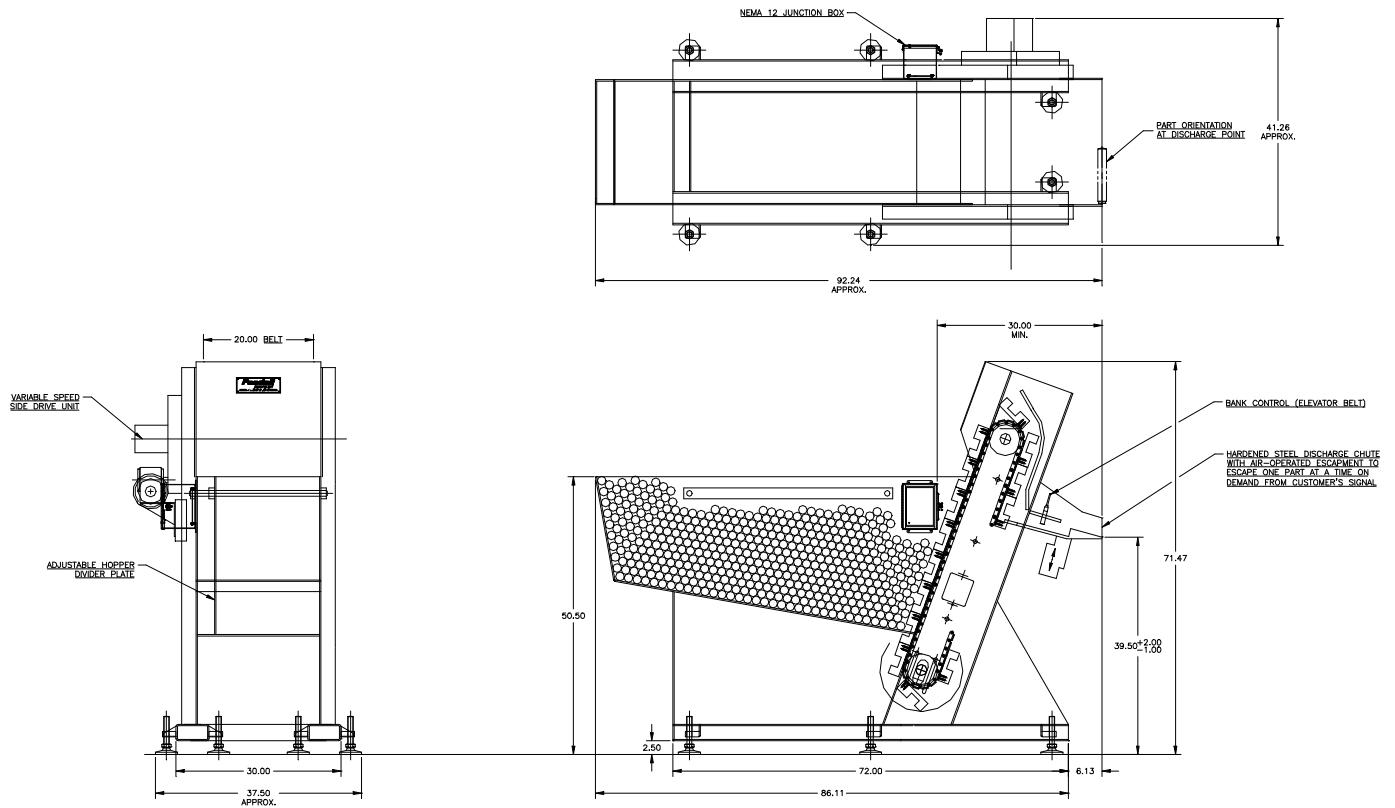


FEEDALL Model 2220 Elevating Hopper Feeder



APPLICATION: Feed from a manually loaded, floor mounted hopper, Steel Tubes. Tubes will be elevated from the hopper via a cleated belt and deposited onto a rear mounted accumulation ramp. An air-operated escapement device will load one part at a time onto a customer supplied v-nest for robot pickup.

BELT WIDTH: 20" Wide Elevating Belt

DRIVE: 1/2 HP/AC Motor

PARTS FED (SIZE): Steel Tubes (1.572"Ø x 3.144"-19.65" Lg.)

FEED RATE: 10 Parts/Minute

MACHINE FED: Crimping Machine