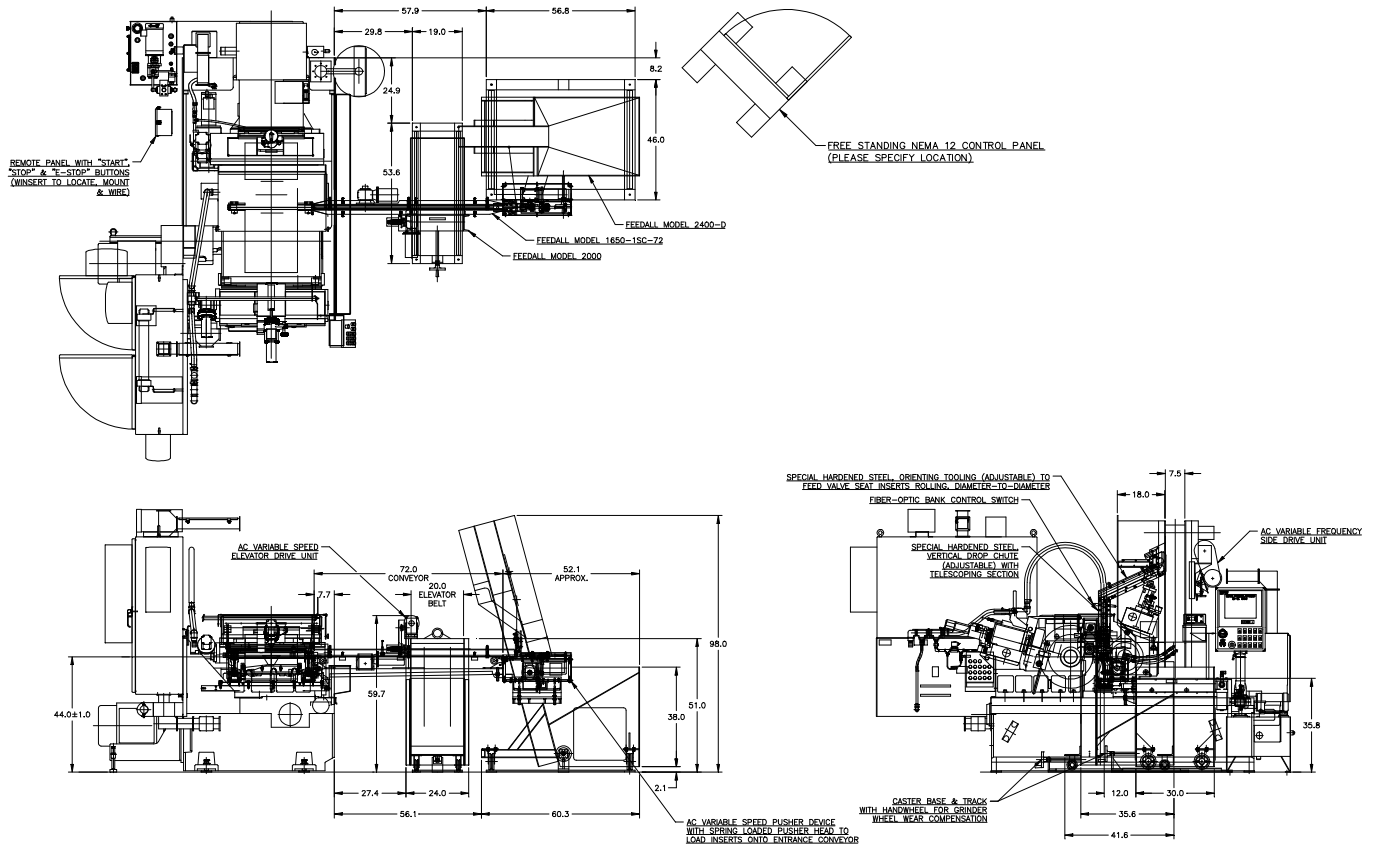


FEEDALL Model 2000 Elevating Hopper Feeder w/1650-1SC-72 Entrance Conveyor & Model 2400-D Elevating Hopper Feeder



- APPLICATION:** Feed from a random loaded, floor mounted hopper, Valve Seat Inserts. Inserts will be elevated from the hopper via a cleated belt and discharged in a continuous stream. The parts will be deposited in a continuous, face-to-face stream to the workrest of a Landis Model 350-20 RK Centerless Grinder.
- BELT WIDTH:** 20" Wide Elevating Belt
- DRIVE:** 1/4 HP/AC Motor
- PARTS FED (SIZE):** Valve Guides (0.472"-0.751"Ø x 0.787"-1.516" Lg.)
- FEED RATE:** 55-100 Inches/Minute
- MACHINE FED:** LANDIS Model 350-20 RK Centerless Grinder