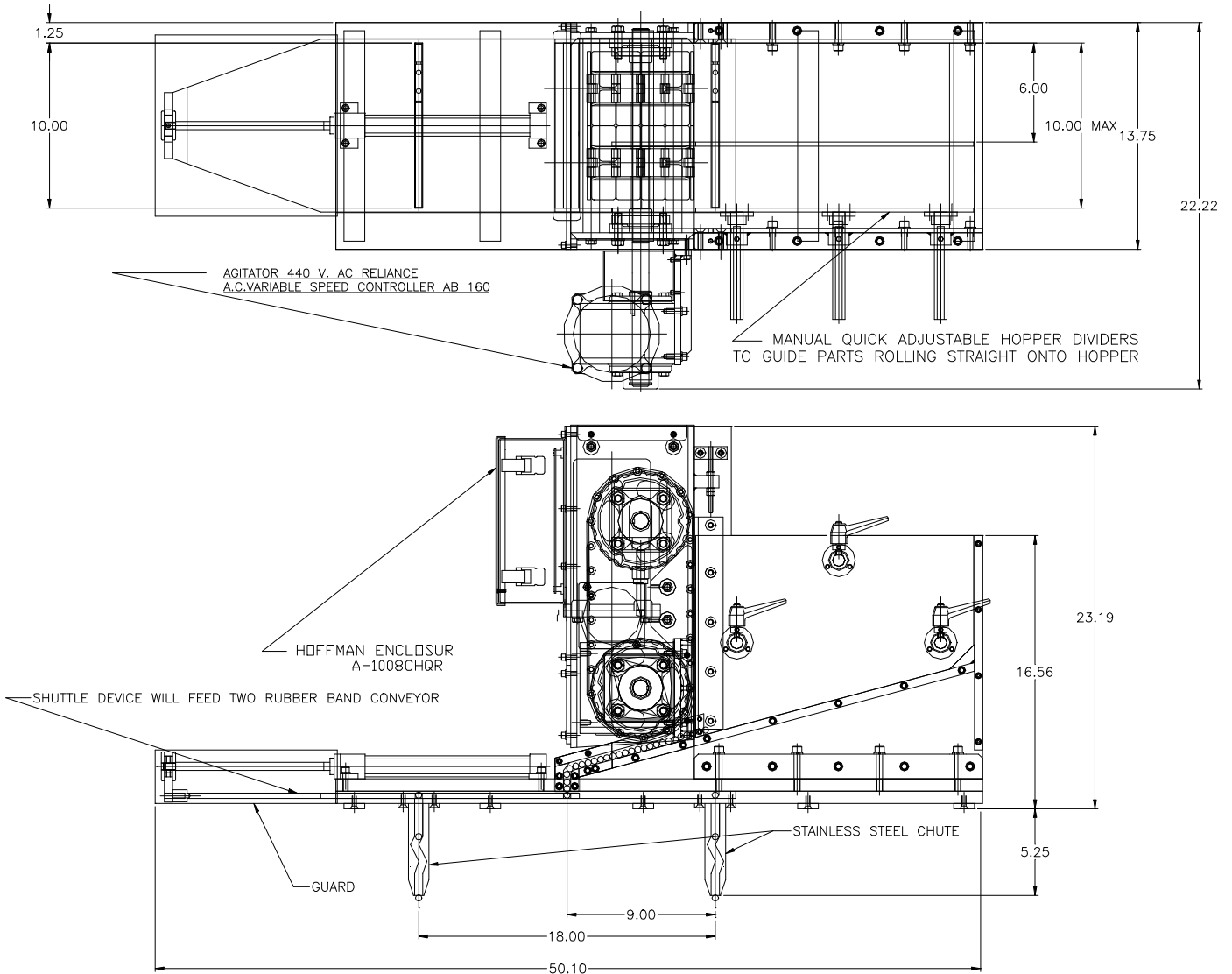


FEEDALL Model 1775 Magazine Bar Feeder



APPLICATION: Feed from a manually loaded magazine, Throttle Body Shafts will be agitated within the magazine with a vertical driven agitator belt rotating against the shafts in the magazine to prevent bridging. The magazine track will be solid to support the full length of the shafts. The shafts will be fed in a continuous, diameter-to-diameter stream to a two-stream shuttle device. The shuttle device will release one part at a time to two separate waterfall chutes which will drop one part per chute at approximately 18 " centers onto a customer supplied rubber band conveyor.

WIDTH: 6"-10" (Adjustable)
DRIVE: 1/4 HP/AC Motor w/Variable Frequency Controller
PARTS FED (SIZE): Throttle Shafts (0.393"Ø x 6.00"-10.00" Lg.)
FEED RATE: 2 Parts/11 Seconds
MACHINE FED: Blasting System