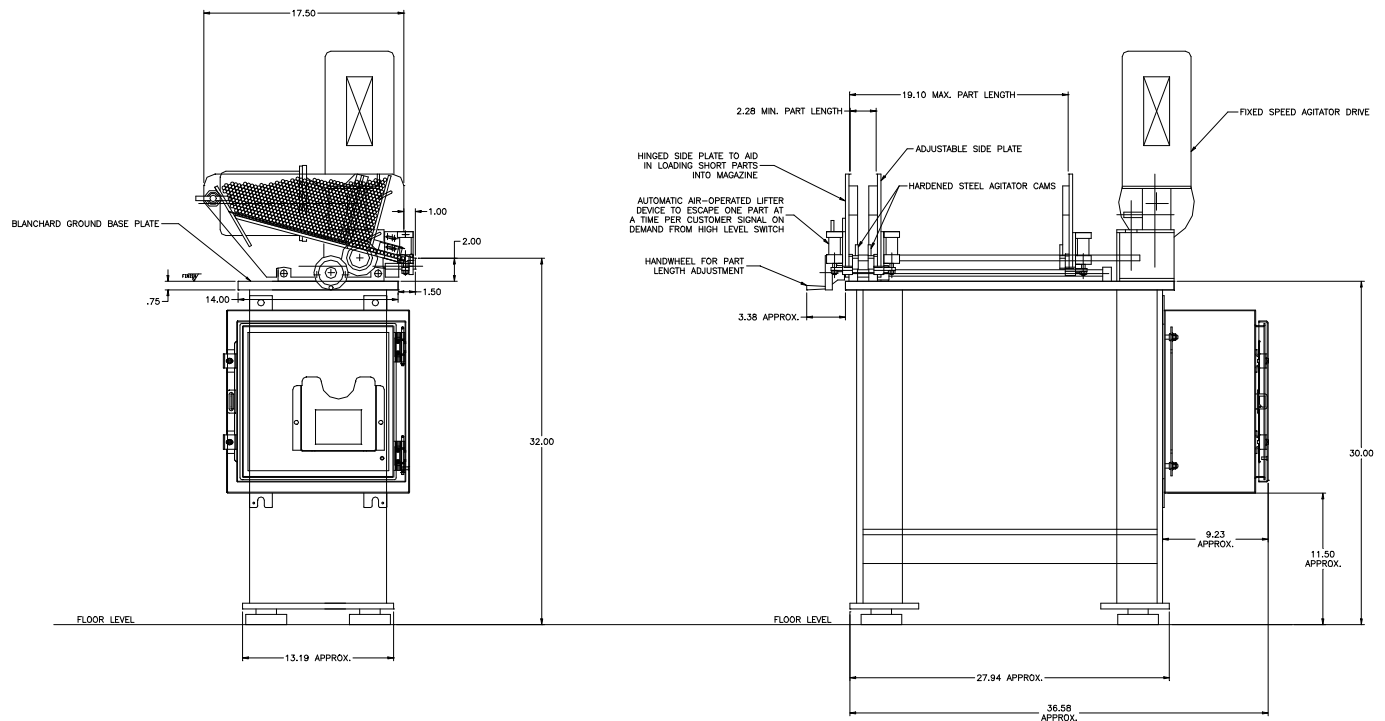


FEEDALL Model 1750 Magazine Bar Feeder



- APPLICATION:** Feed bars from a manually loaded, floor mounted magazine. Steel Tubes will be fed in a continuous stream and escaped one at a time rolling onto a front mounted cross-feed conveyor and fed in a continuous end to end stream.
- WIDTH:** 2.28"-19.10" (Adjustable)
- DRIVE:** 1/6 HP/AC Motor
- PARTS FED (SIZE):** Nut Wrench Tubes (0.25"-0.56"Ø x 2.28"-19.10" Lg.)
- FEED RATE:** 5 Parts/Minute
- MACHINE FED:** Assembly Machine