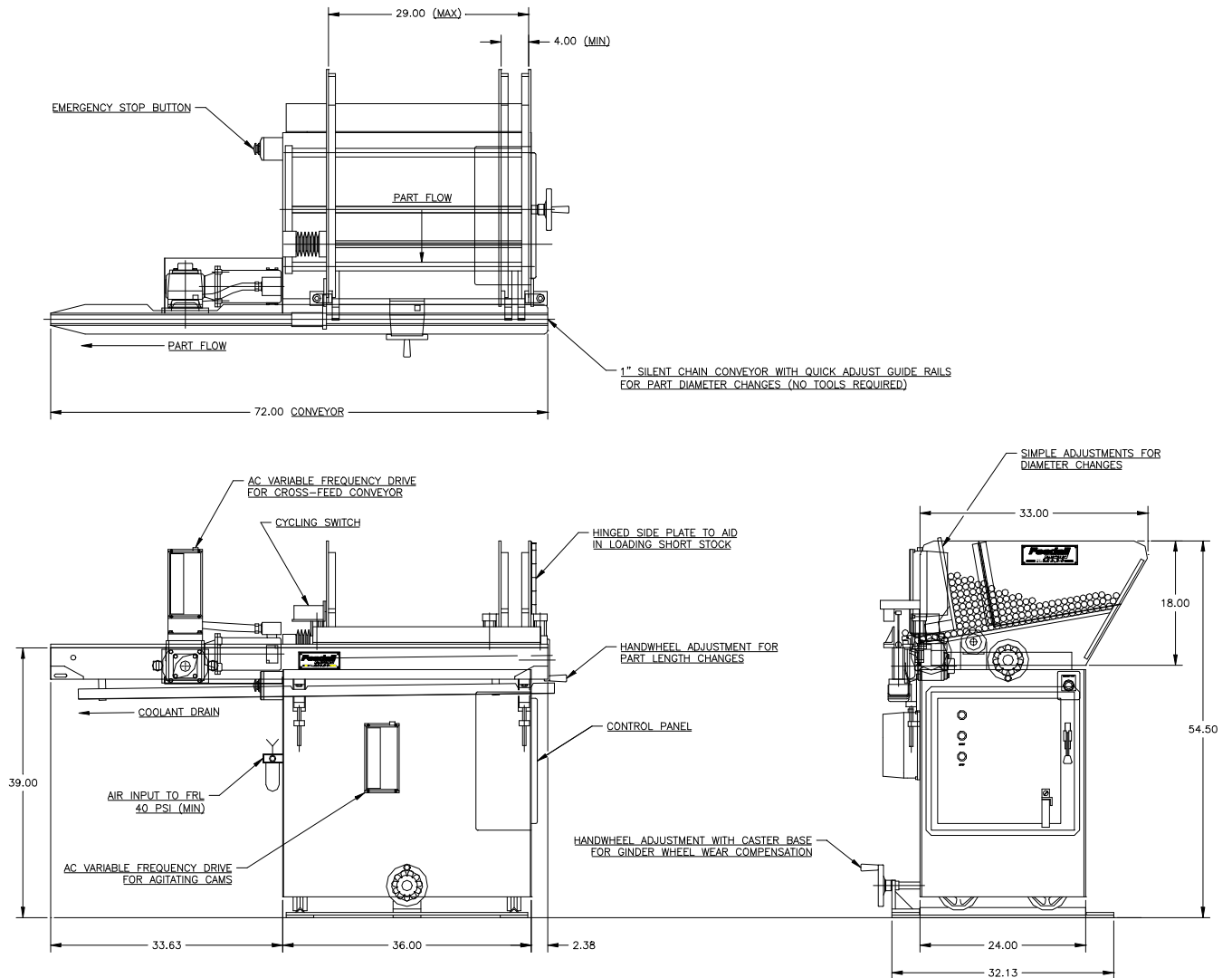


FEEDALL Model 1700-D Magazine Bar Feeder w/1650-1SC-72 Cross-Feed Conveyor



- APPLICATION:** Feed from a manually loaded, floor mounted magazine. Shafts will be fed in a continuous stream and escaped one at a time onto a front mounted cross-feed conveyor. The conveyor will translate parts in a continuous stream to the workrest of a CINCINNATI centerless grinder.
- WIDTH:** 4"-29" (Adjustable)
- DRIVE:** 1/4 HP/AC Motor w/Variable Frequency Controller
- PARTS FED (SIZE):** Shafts (0.50"-1.25"Ø x 4.00"-29.00" Lg.)
- FEED RATE:**
- MACHINE FED:** CINCINNATI Centerless Grinder