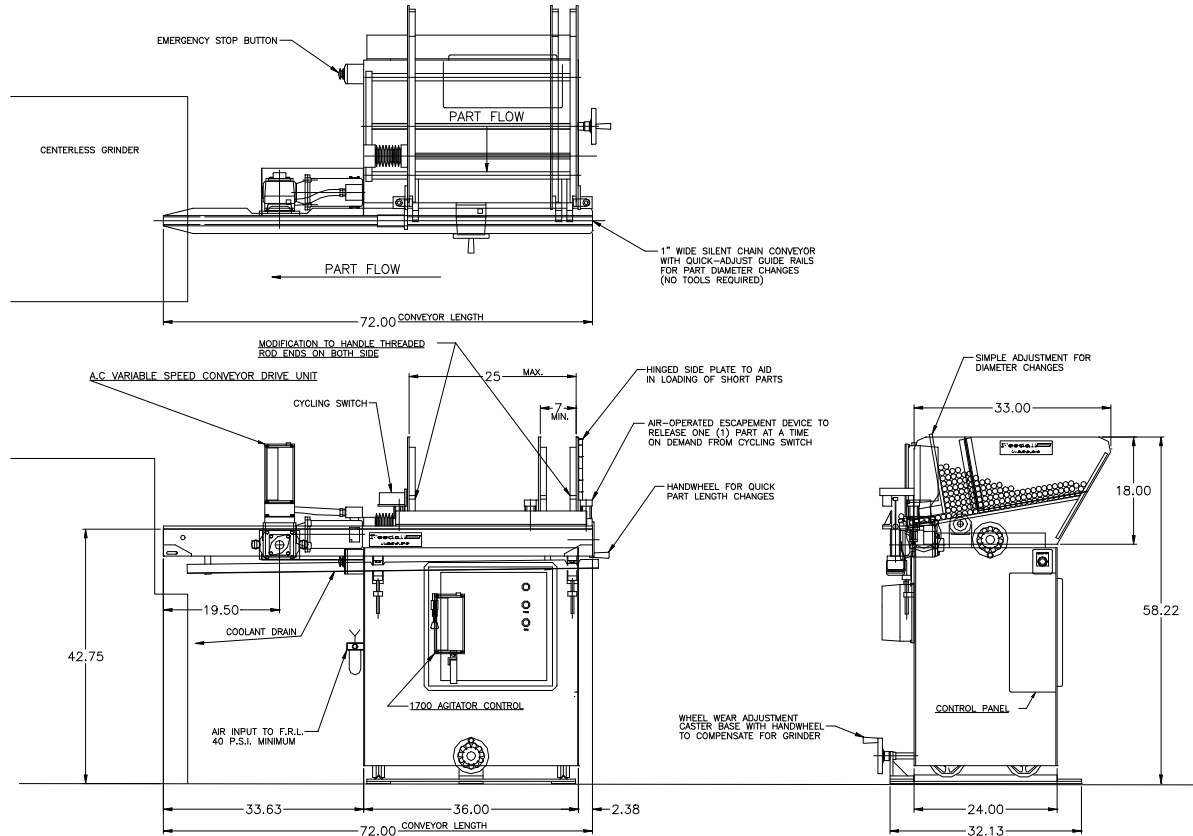


## FEEDALL Model 1700-D Magazine Bar Feeder w/1650-1SC-72 Cross-Feed Conveyor



- APPLICATION:** Feed Piston Rods from a manually loaded, floor mounted magazine. The rods will be fed in a continuous stream and escaped one at a time rolling onto a front mounted, cross-feed conveyor. The conveyor will translate parts in a continuous stream to a Model 350-20 AE centerless grinder.
- WIDTH:** 7"-25" (Adjustable)
- DRIVE:** 1/4 HP/AC Motor
- PARTS FED (SIZE):** Shock Absorber Piston Rods (0.75"-1.00"Ø x 4.00"-24.00" Lg.)
- FEED RATE:** 226 Inches/Minute
- MACHINE FED:** Centerless Grinder