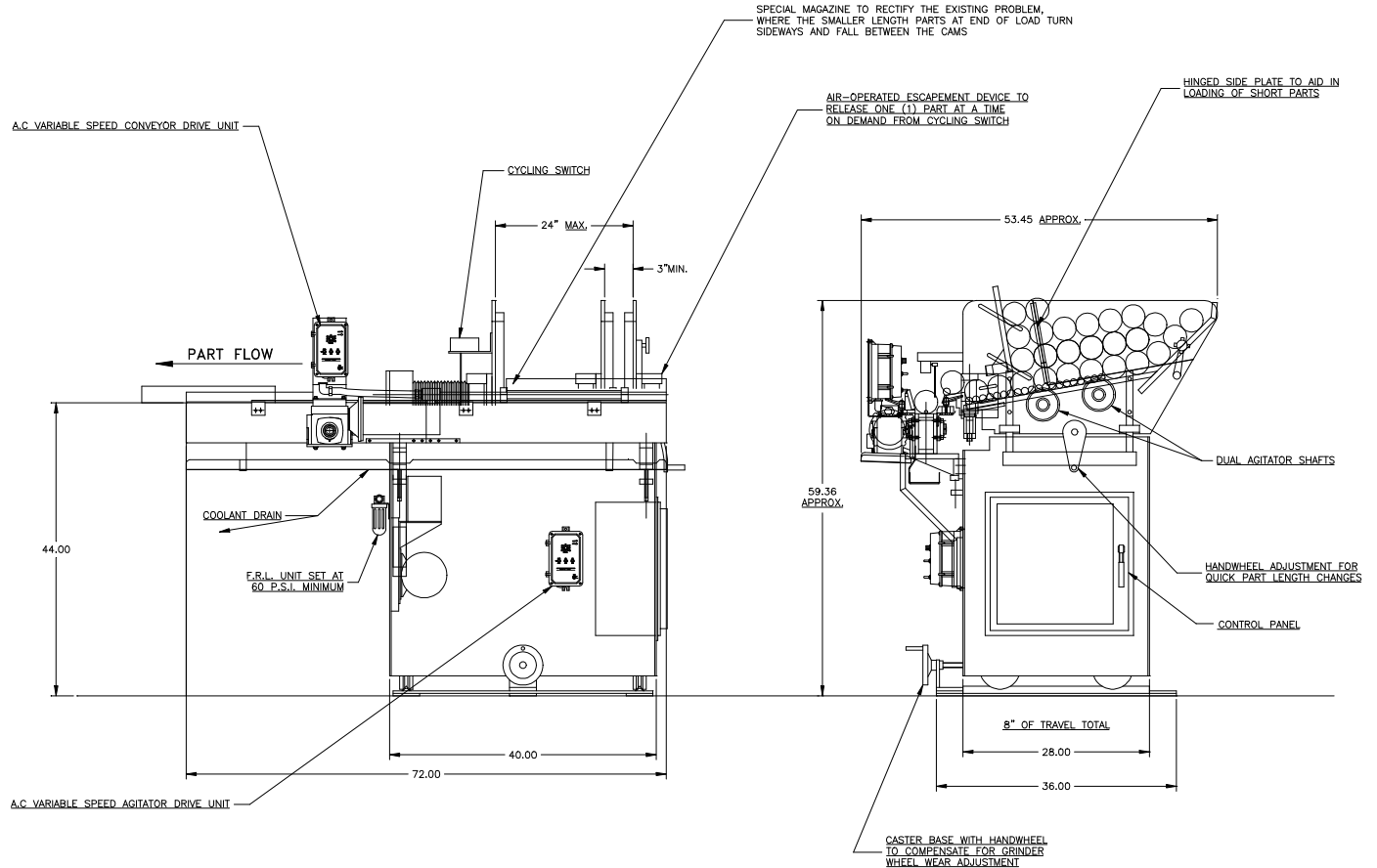


FEEDALL Model 1700-424 Magazine Bar Feeder w/1650HD-2SC-72 Cross-Feed Conveyor



- APPLICATION:** Feed from a manually loaded magazine. The Steel Pins parts will be fed in a continuous end-to-end stream to a CINCINNATI #2 EA Centerless Grinder.
- WIDTH:** 3"-24" (Adjustable)
- DRIVE:** 1/2 HP/AC Motor w/Variable Frequency Controller
- PARTS FED (SIZE):** Steel Shafts (0.50"-3.50"Ø x 3.00"-24.00" Lg.)
- FEED RATE:** 4 Parts/Minute
- MACHINE FED:** CINCINNATI #2 EA Centerless Grinder