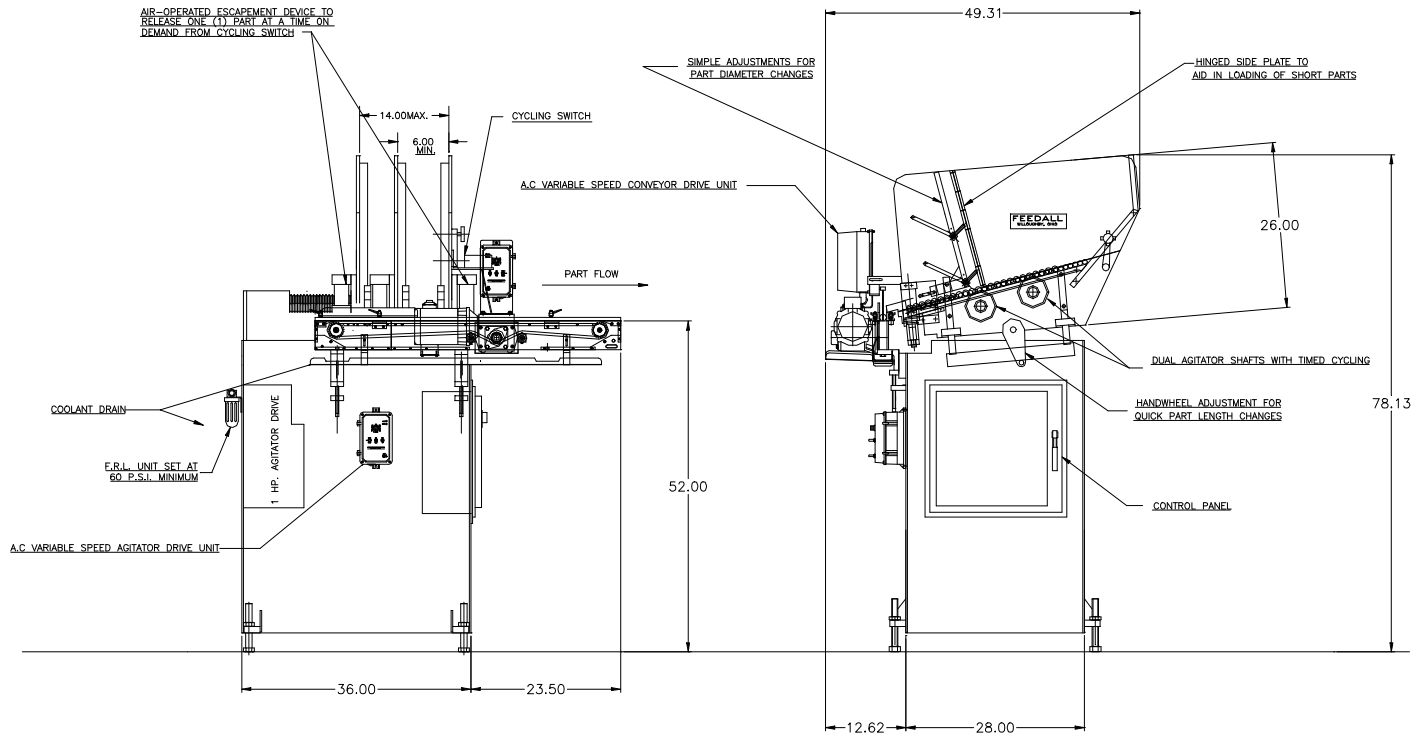


## FEEDALL Model 1700-224 Magazine Bar Feeder w/1650-1SC-48 Cross-Feed Conveyor



- APPLICATION:** Feed from a manually loaded, floor mounted magazine. The Sheared Steel Bars will be escaped rolling into your V-nest, one at a time per each signal given by the machine being fed.
- WIDTH:** 6"-14" (Adjustable)
- DRIVE:** 1 HP/AC Motor w/Variable Frequency Controller
- PARTS FED (SIZE):** Sheared Steel Billets (0.50"-1.125"Ø x 6.313"-14.00" Lg.)
- FEED RATE:** 10 Parts/Minute
- MACHINE FED:** Induction Heater