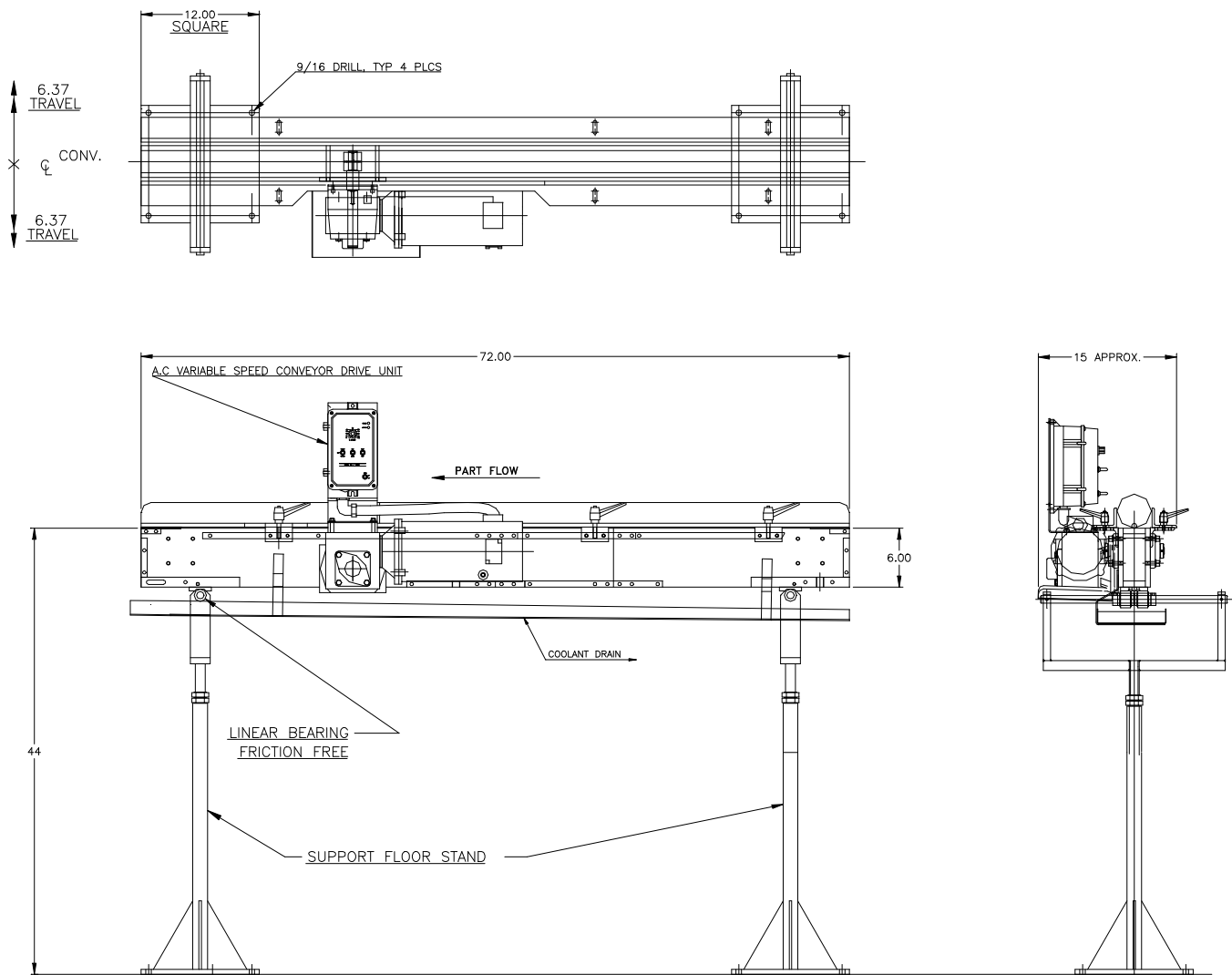


FEEDALL Model 1650HD-2SC-72 Exit Conveyor



- APPLICATION:** Convey Steel Pins from the workrest of a CINCINNATI #2 EA Centerless Grinder.
- BELT WIDTH:** 2" Wide Silent Chain
- DRIVE:** 1/2 HP/AC Motor w/Variable Frequency Controller
- PARTS FED (SIZE):** Steel Shafts & Bushings (0.50"-3.50"Ø x 3.00"-24.00" Lg.)
- FEED RATE:** 1-50 Feet/Minute
- MACHINE FED:** CINCINNATI #2 EA Centerless Grinder