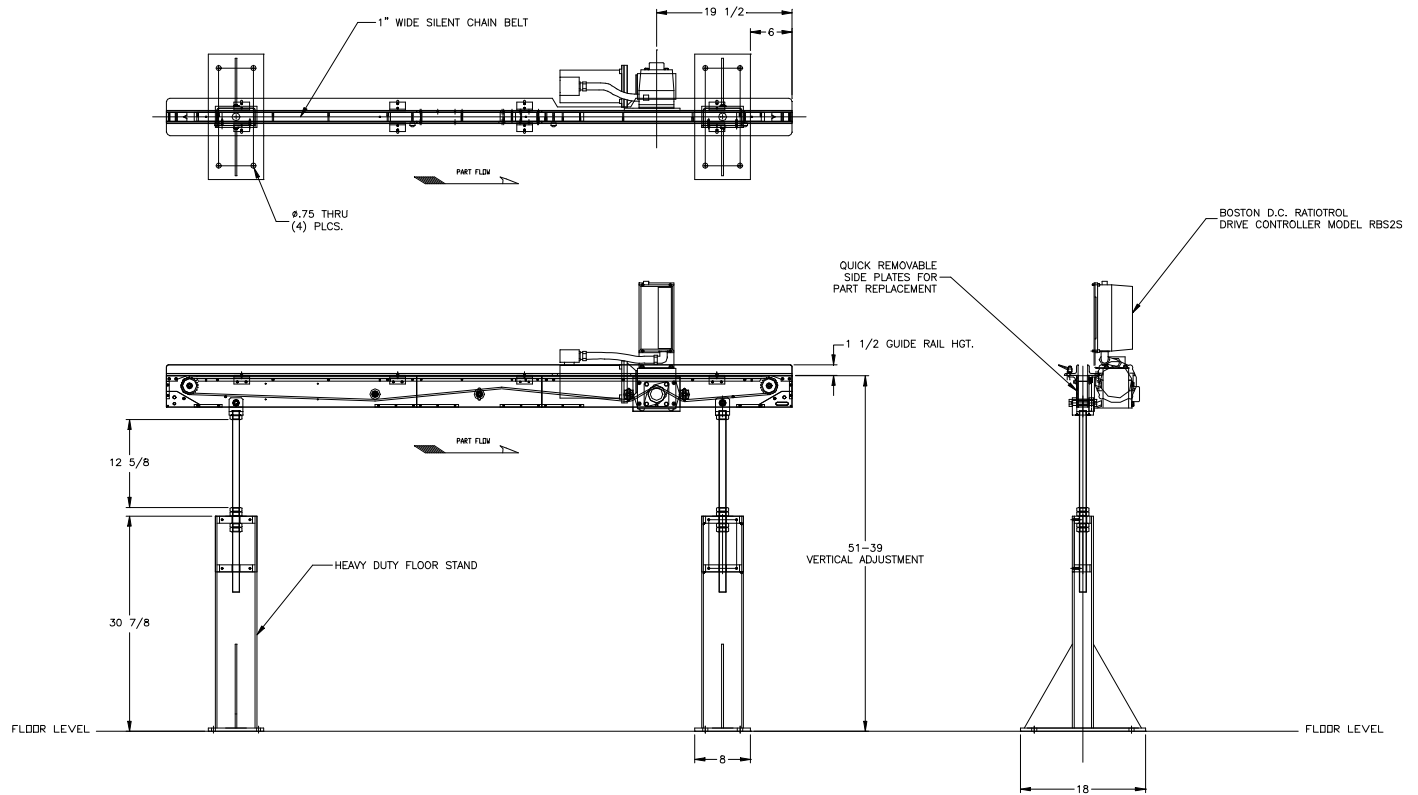


FEEDALL Model 1650-2SC-90 Exit Conveyor



APPLICATION:	Accept Suspension Bushing Inner Metal Tubes and convey them to a Storage Tub.
BELT WIDTH:	2" Wide Silent Chain
DRIVE:	1/2 HP/AC Motor w/Variable Frequency Controller
PARTS FED (SIZE):	Suspension Bushing Inner Metal Tubes (0.90"-1.375"Ø x 1.50"-8.00" Lg.)
FEED RATE:	1-50 Feet/Minute
MACHINE FED:	Storage Tub