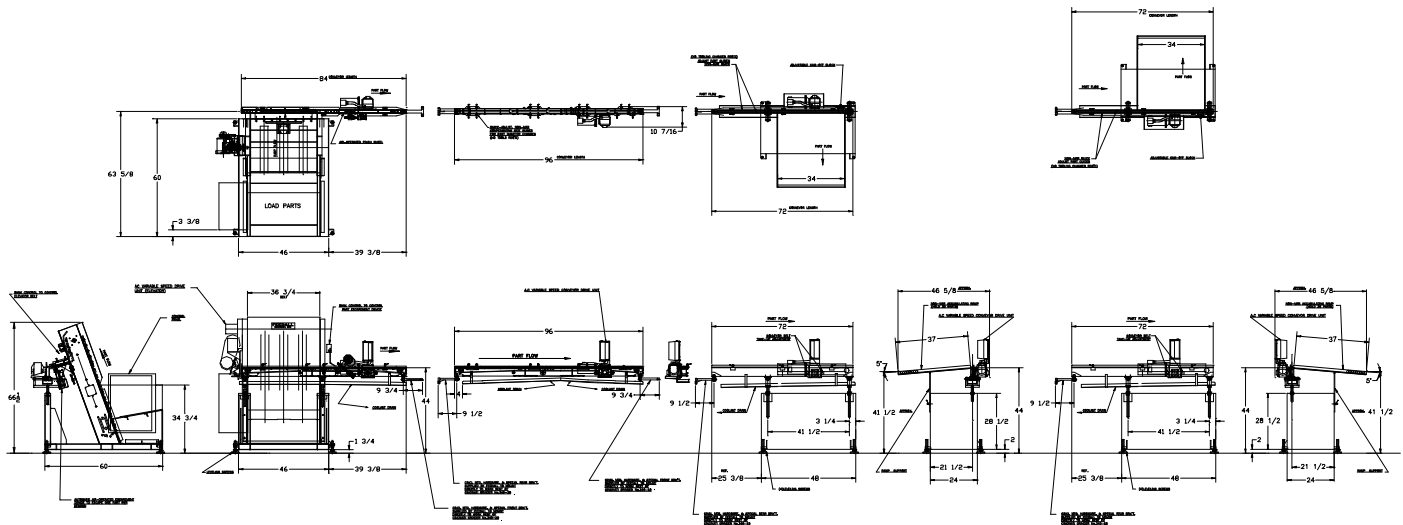


FEEDALL Model 2236 Elevating Hopper Feeder w/1650-1SC-84 Cross-Feed Conveyor

FEEDALL Model 1650-2PB-96 Intermediate Conveyor

FEEDALL Model 1650-1PB-72 Exit Conveyor



APPLICATION:

Feed from an automatic or random loaded, floor mounted hopper. The Steering Racks will then be elevated from the hopper and discharged rolling into an accumulation chute, where they will be escaped one at a time onto a rear mounted, cross-feed conveyor. The conveyor will transfer the parts in a continuous stream to the workrest of a CINCINNATI Model 340-20 DE centerless grinder. Then a Model 1650 conveyor will transfer the parts between two CINCINNATI Model 340-20 DE centerless grinders. Then the next Model 1650 conveyor will transfer the parts from a CINCINNATI Model 340-20 DE centerless grinder onto a collection ramp.

BELT WIDTH:

36" Wide Elevating Belt

DRIVE:

1 HP/AC Motor

PARTS FED (SIZE):

Steering Racks (25mm-30mmØ x 24"-33" Lg.)

FEED RATE:

5 Parts/Minute

MACHINE FED:

CINCINNATI Model 340-20 DE Centerless Grinder