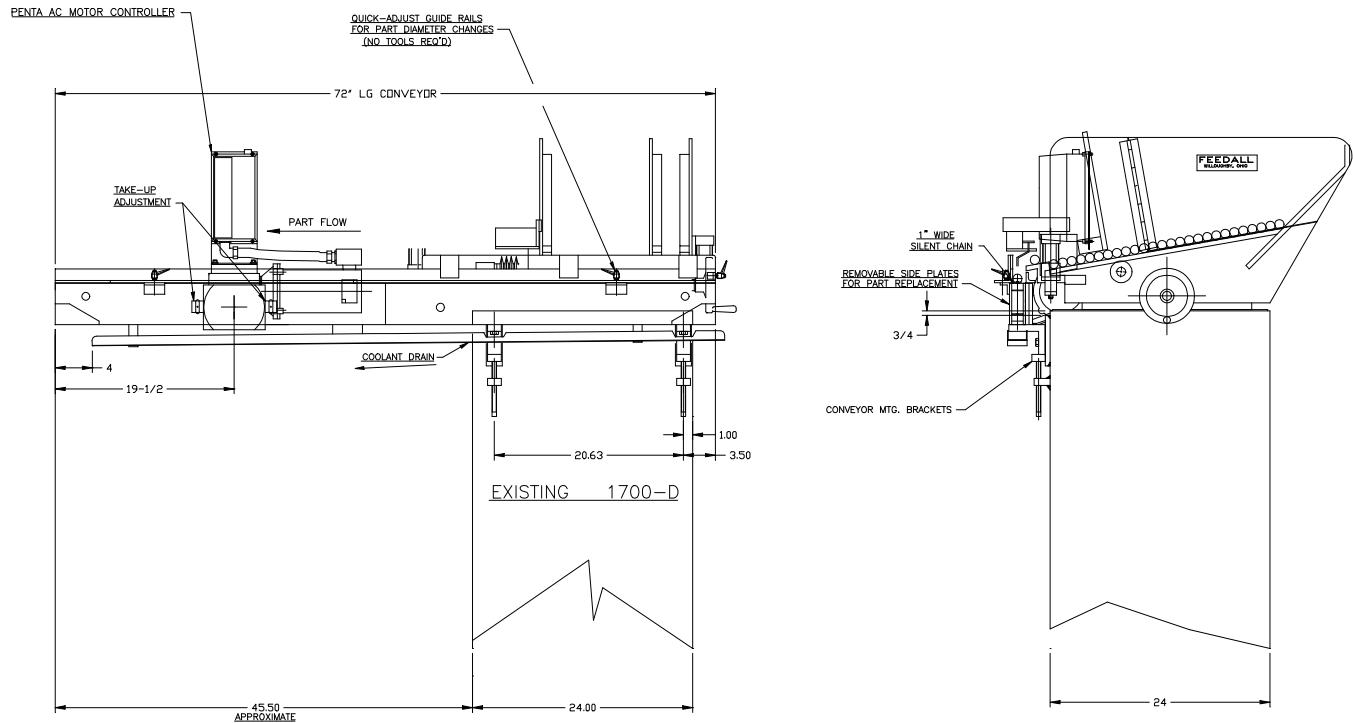


FEEDALL Model 1650-1SC-72 Cross-Feed Conveyor (Retrofit)



APPLICATION:	Convey Steel Bars to the workrest of a Thread Roller.
BELT WIDTH:	1" Wide Silent Chain
DRIVE:	1/4 HP/AC Motor w/Variable Frequency Controller
PARTS FED (SIZE):	Steel Bars (0.375"-1.000"Ø x 3.500"-14.750" Lg.)
FEED RATE:	1-50 Feet/Minute
MACHINE FED:	Threaded Roller