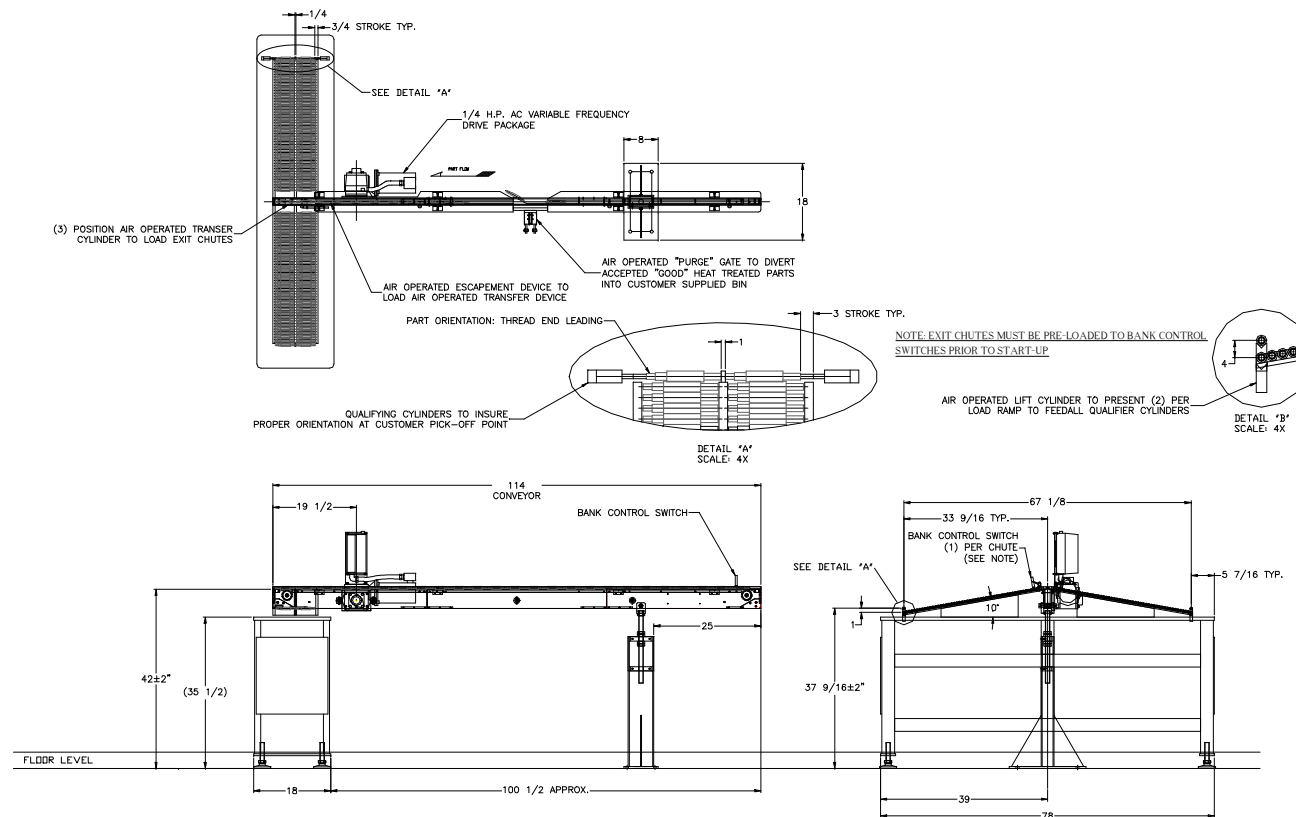


FEEDALL Model 1650-1SC-114 Intermediate Conveyor



APPLICATION:

Accept Input Shafts from Induction Hardener and convey them to an air-operated escapement. The escapement feeds an air-operated, two-stream diverter that loads two parts at a time into two opposing load ramps on demand. The shafts will exit the ramps via an air-operated lifting blade and qualified for Robot pick-off to load a Centerless Grinder.

BELT WIDTH:

1" Wide Silent Chain

DRIVE:

1/4 HP/AC Motor w/Variable Frequency Controller

PARTS FED (SIZE):

Input Shafts (0.63"Ø x 4.37" Lg.)

FEED RATE:

18-20 Parts/Minute

MACHINE FED:

Robot Loaded CINCINNATI Model 220-8 Centerless Grinders