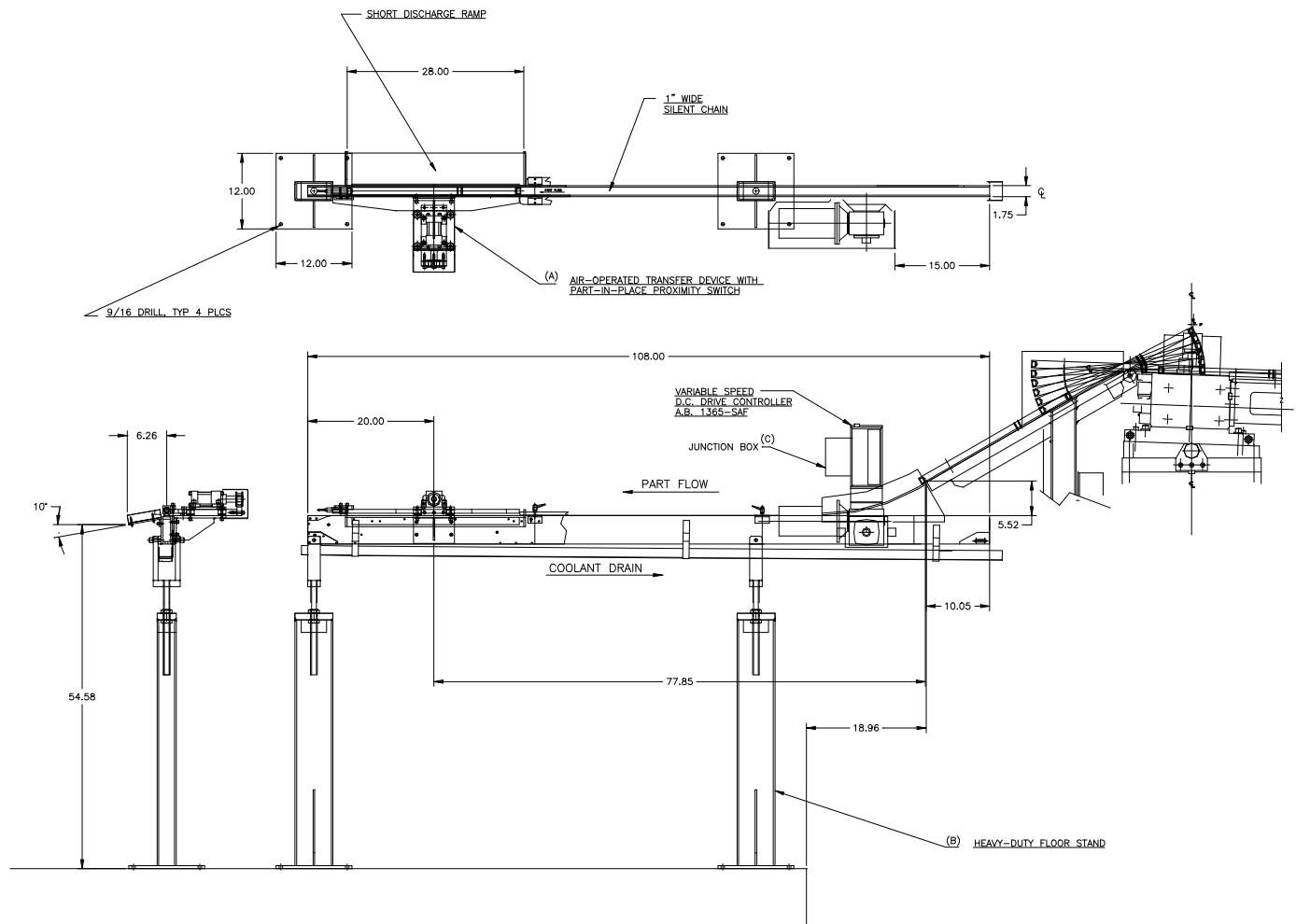


FEEDALL Model 1650-1SC-108 Intermediate Conveyor



- APPLICATION:** Convey Steering Racks from Detroit Broach to a Parts Washer. The parts will exit the conveyor rolling, diameter-to-diameter with the axis horizontal into a short discharge ramp.
- BELT WIDTH:** 1" Wide Silent Chain
- DRIVE:** 1/4 HP/AC Motor w/Variable Frequency Controller
- PARTS FED (SIZE):** Steering Racks (1.1918"Ø x 27.50" Lg.)
- FEED RATE:** 1-50 Feet/Minute
- MACHINE FED:** Parts Washer