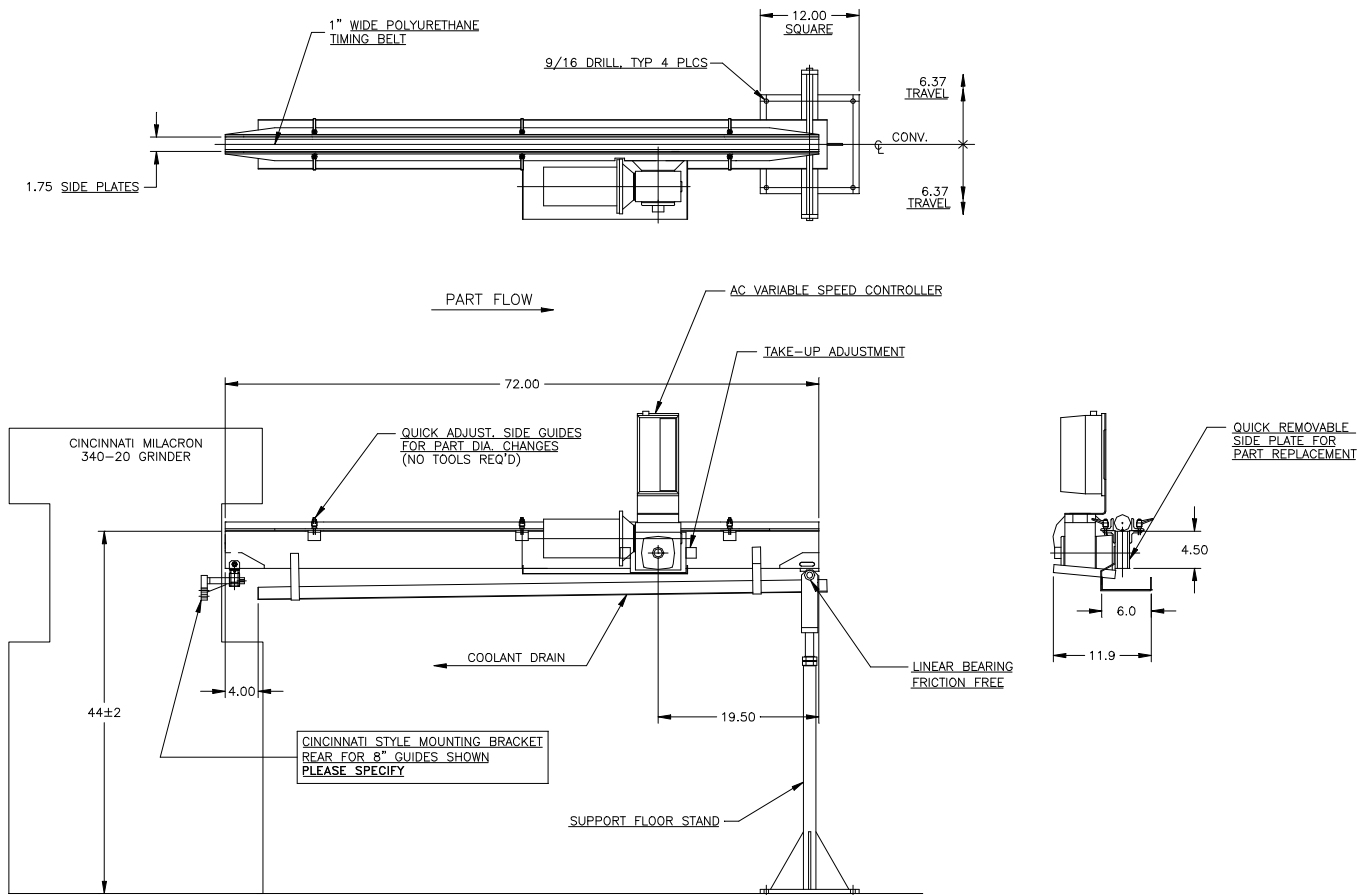


## FEEDALL Model 1650-1PB-72 Exit Conveyor



|                          |   |
|--------------------------|---|
| <b>APPLICATION:</b>      | Convey Steel Tubes to the workrest of a CINCINNATI Model 340-20 Centerless Grinder. |
| <b>BELT WIDTH:</b>       | 1" Wide Polyurethane Timing Belt  |
| <b>DRIVE:</b>            | 1/4 HP/AC Motor w/Variable Frequency Controller                                     |
| <b>PARTS FED (SIZE):</b> | Steel Tubes (0.75"-2.50"Ø x 4.00"-12.00" Lg.)                                       |
| <b>FEED RATE:</b>        | 1-50 Feet/Minute  |
| <b>MACHINE FED:</b>      | CINCINNATI Model 340-20 Centerless Grinder  |