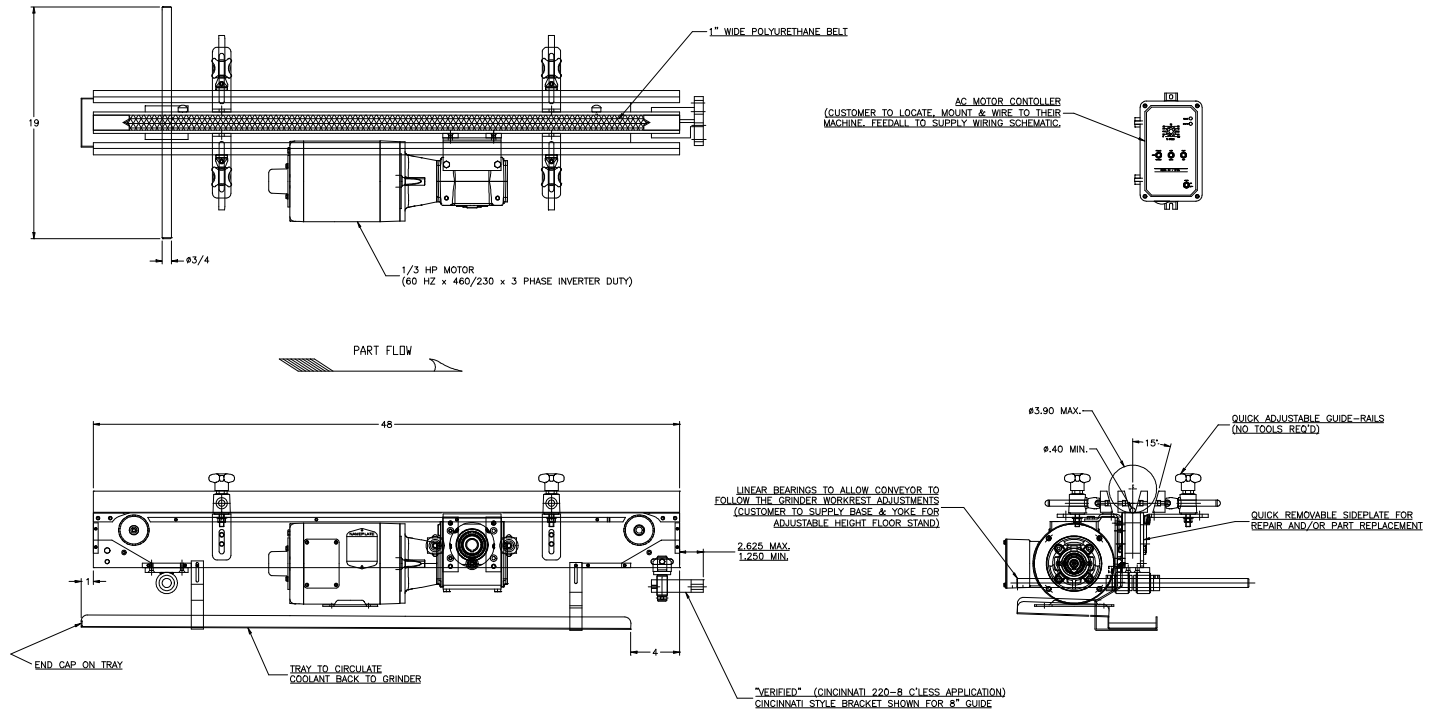


FEEDALL Model 1650-1PB-48 Entrance Conveyor



APPLICATION:	Convey Ceramic Rounds to the workrest of a CINCINNATI Model 220-8 Centerless Grinder.
BELT WIDTH:	1" Wide Polyurethane Timing Belt
DRIVE:	1/4 HP/AC Motor w/Variable Frequency Controller
PARTS FED (SIZE):	Ceramic Rounds (0.40"-3.90"Ø x 0.30"-2.50" Lg.)
FEED RATE:	1-50 Feet/Minute
MACHINE FED:	CINCINNATI Model 220-8 Centerless Grinder