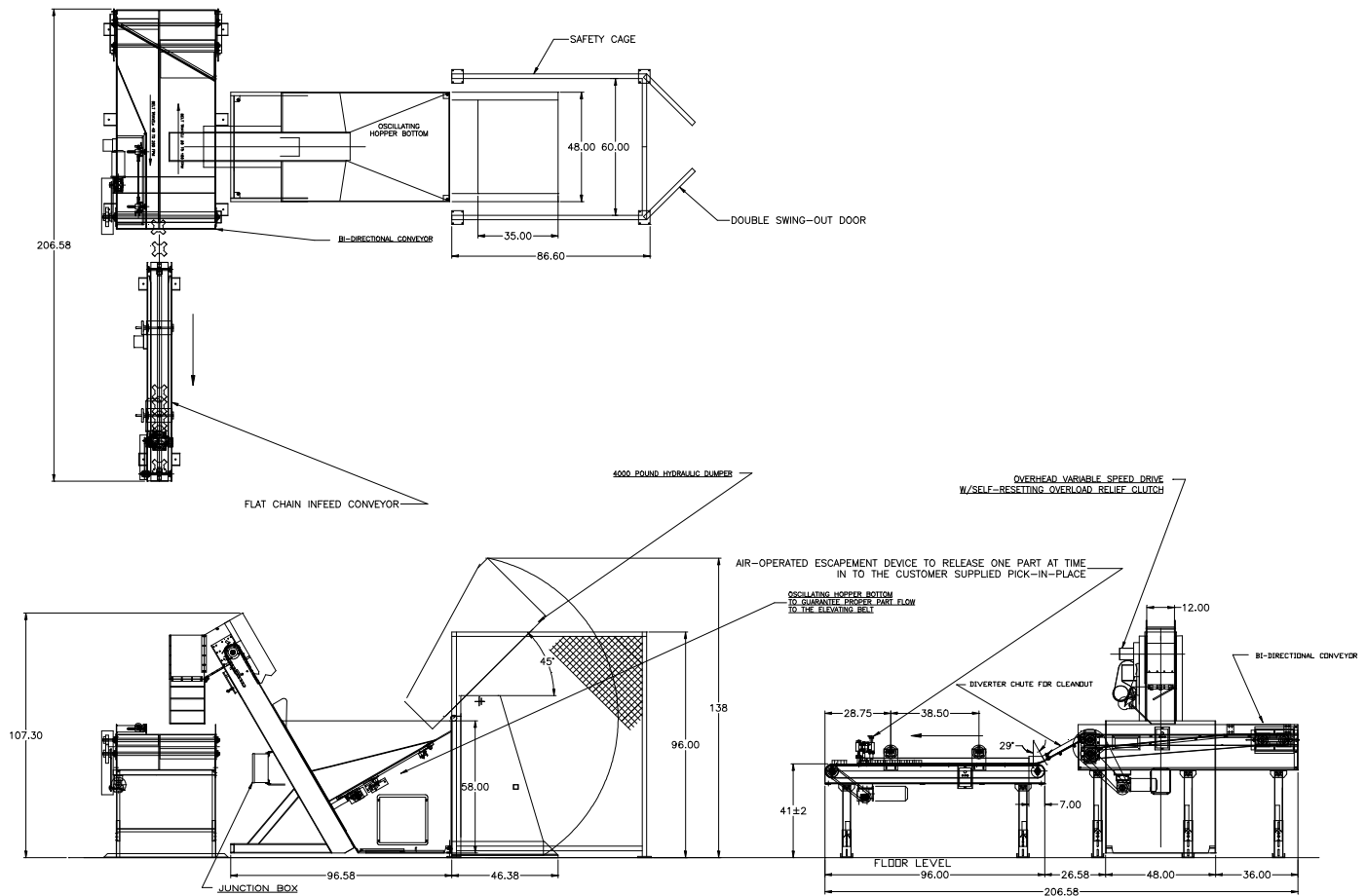


## **FEEDALL Model 1500 Bi-Directional Orienting Conveyor w/2500-D Elevating Bulk Hopper Feeder, 4,000# Hydraulic Tub Dumper & TTP-7.5-8 Discharge Conveyor**



- APPLICATION:** Feed from a tub dumper into a floor mounted hopper. The Universal Joint Spiders will be elevated from the hopper via a cleated belt and fed onto a discharge conveyor. The parts will then be escaped one at a time into a customer supplied pick-n-place unit.
- BELT WIDTH:** 12" Wide Elevating Belt
- DRIVE:** 3/4 HP/AC Motor
- PARTS FED (SIZE):** Universal Joint Spiders (Various Sizes)
- FEED RATE:** 12 Parts/Minute
- MACHINE FED:** Palletized Conveyor