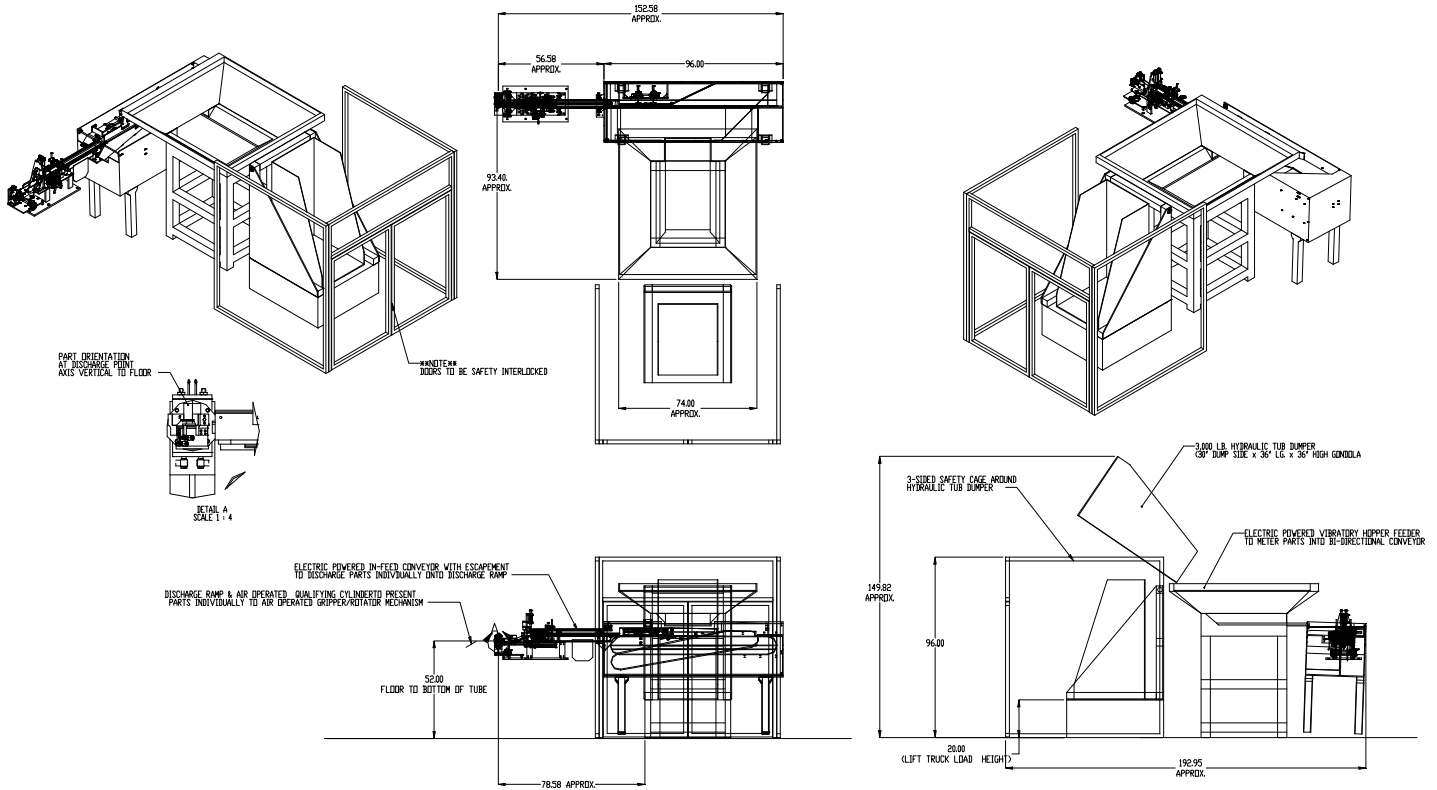


FEEDALL Model 1500 Bi-Directional Orienting Conveyor w/3,000# Vibratory Metering Hopper, TC-38-84-3,000# Hydraulic Tub Dumper & GLH-3.5-4 Exit Conveyor



APPLICATION:

Feed parts from a random loaded floor mounted hopper. The parts will then be metered from a vibratory hopper on demand and spilled at random onto a bi-directional feed conveyor. The parts will merge from the infeed conveyor lane onto the orienting conveyor lane and exit in a continuous end-to-end stream to an automatic, air operated slug pusher device. The pusher device will load one slug at a time into an air-operated rotary actuator equipped with a pneumatic gripper. The rotary actuator will present the slug with axis vertical with the bottom of the slug.

BELT WIDTH: 18" Return Lane and a 12" Orienting Lane

DRIVE: 1-1/2 HP/AC Motor

PARTS FED (SIZE): Steel Tubes (17.27mm-74.62mmØ x 43.69mm-131.57mm Lg.)

FEED RATE: 10 parts/minute

MACHINE FED: Press