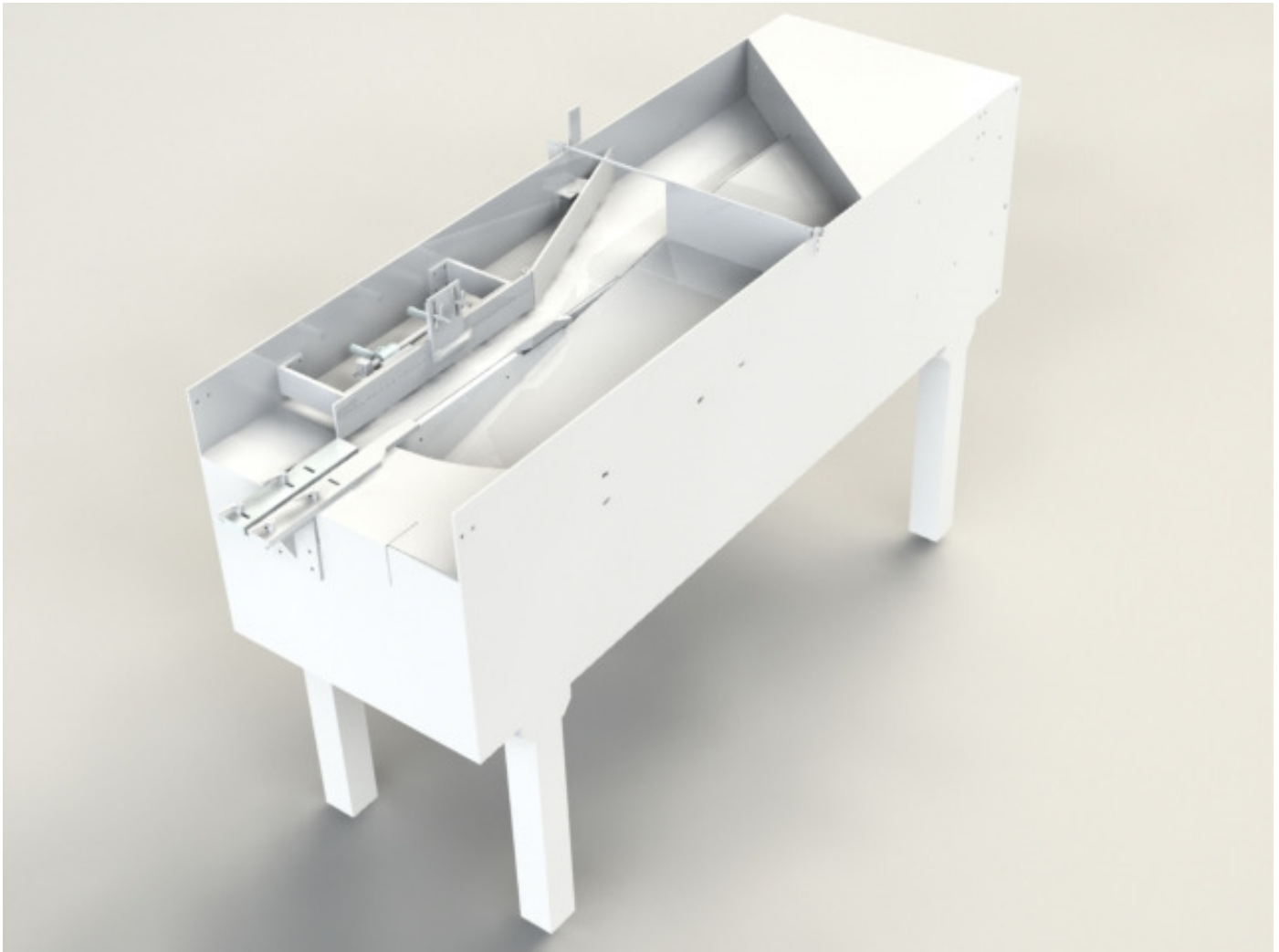


FEEDALL Model 1500 Bi-Directional Orienting Conveyor



APPLICATION:	Accept Steel Tubes from customer's conveyor at random onto a Bi-Directional feed conveyor. Tubes will merge from the in-feed (load) lane onto the orienting lane conveyor and discharged in a continuous, end-to-end stream.
BELT WIDTHS:	18" Wide PVC - In-Feed (Load) Lane 12" Wide PVC - Orienting Lane
DRIVES:	1/2 HP Gearmotor with 230/460/3/60 Volt-Phase-Cycle – In-Feed (Load) Lane 1/2 HP Gearmotor with 230/460/3/60 Volt-Phase-Cycle – Orienting Lane
BELT SPEEDS:	20-100 feet/minute – In-Feed (Load) Lane 40-200 feet/minute – Orienting Lane
PARTS FED (SIZE):	Steel Tubes (0.25"-1.00"Ø x 2.00"-7.00" Long)
FEED RATE:	2,000 parts/hour (≈33 parts/minute)
MACHINE FED:	End Finisher

FEEDALL Model 1500 Bi-Directional Orienting Conveyor

