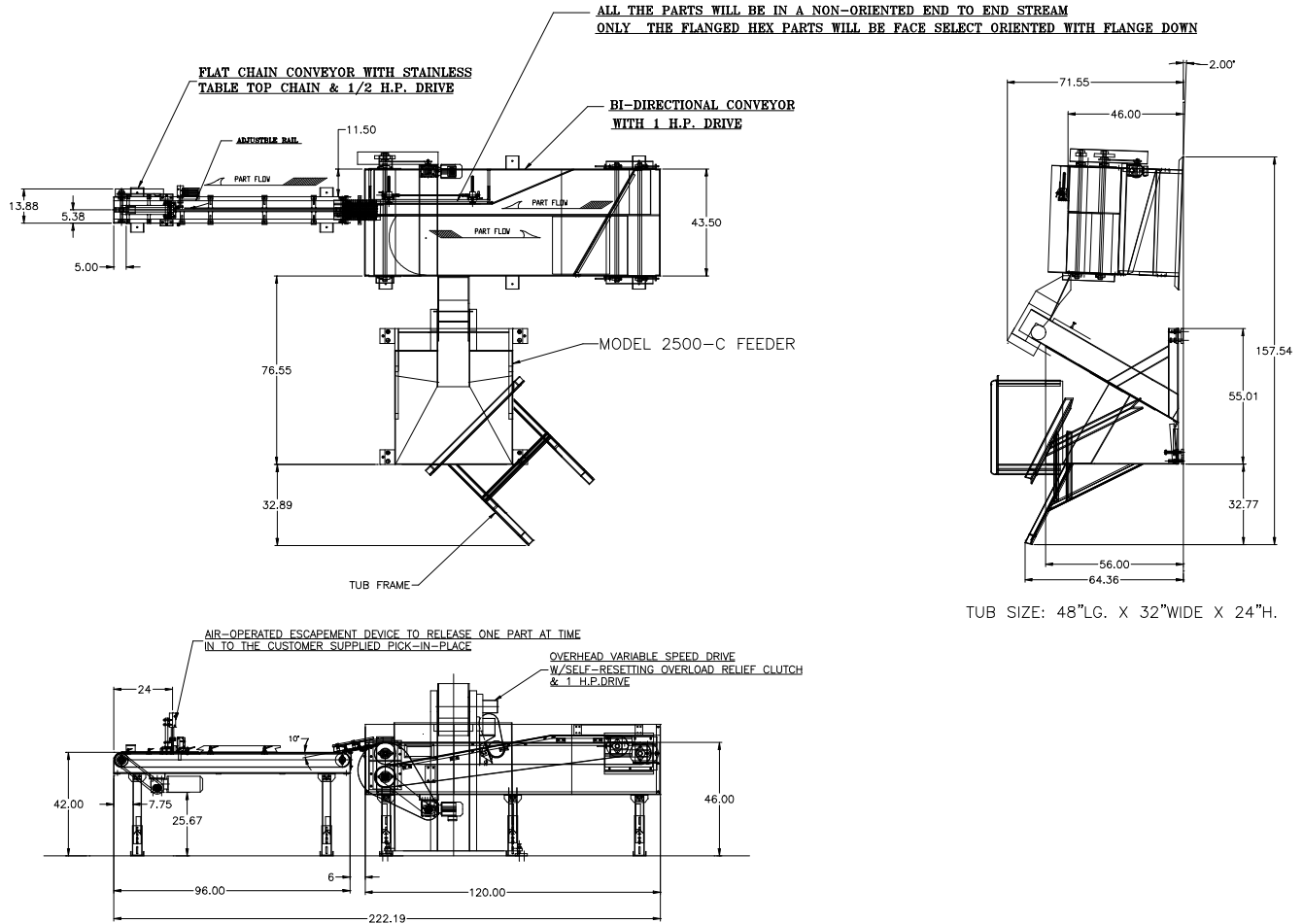


## FEEDALL 1500 Bi-Directional Orienting Conveyor w/Model 2500-C Elevating Bulk Feeder & Drop Bottom Tub Stand



**APPLICATION:**

Feed from DROP BOTTOM TUB STAND. The parts will then be spilled randomly onto a bi-directional feed conveyor. The parts will merge from the in-feed conveyor portion onto the discharge conveyor. The parts will be escaped one at a time onto a customer supplied pick-in-place unit. All the parts will be in a non-oriented end-to-end stream released one at a time for part separation to allow for a customer supplied "vision system" to detect orientation for a customer supplied robot to pick up and load the part into a machining center.

**BELT WIDTH:**

24" Return Lane/18" Orienting Lane

**DRIVE:**

1-1/2 HP/AC Motor

**PARTS FED (SIZE):**

Pipe Fitting Forgings (Part Matrix)

**FEED RATE:**

8-10 Parts/Minute

**MACHINE FED:**

Robot Loaded Machining Center